

R6

Revovox®

TEXTURED EXTERIOR

Cement-based, coarse-grained plaster for repairing and plastering façades.



EXTERIOR



COVERING

FOR ALL TYPES OF CONVENTIONAL PAINT
AFTER COMPLETE DRYING (1)

CLASSIFICATION (EN 16566)

G3S3V2W2A0C0R0

SURFACES

Cement, laminated cement slabs, stone, brick, concrete, well-bonded non-elastic plastic paints.

Surfaces must be sound, dry, cohesive, absorbent, well adhered, clean and free of dust.

CHARACTERISTICS

- Normal setting.
- Easy to apply and smooth.
- Possibility of trowelling.
- Waterproof product.
- Can be applied in a thick layer.

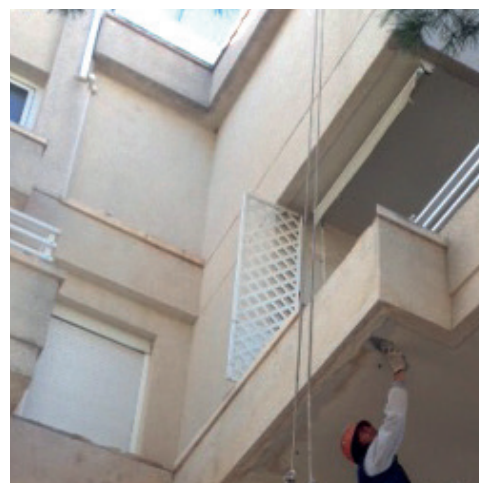
IDEAL FOR

- Catching holes and cavities.
- Plastering of walls and exterior walls.

ON-SITE APPLICATION

SURFACE PREPARATION

The surface must be sound, clean and free of any trace of saltpetre, fungi, microorganisms, grease, release oils and, in general, any type of material that could make it difficult for the product to adhere to the surface.



R6

EXTERIOR POWDERED PRODUCT



Revox®

TEXTURED EXTERIOR

ON-SITE APPLICATION

CLEANING

When the supports present traces of fungi, algae or other types of microorganisms, we will proceed with the curative treatment, first of all, with a quick mold cleaner. This will be applied to the surface to be treated and after 5 -10 minutes of action, the support will be cleaned with the help of a pressurized water machine or with a hard bristle brush. Next, and once the support is completely dry, a broad-spectrum biocide cleaner will be applied until the support is completely impregnated. This treatment is called preventive, it is very effective and serves to prevent the future appearance of microorganisms.

If there are saltpetre stains on the surface to be treated, carry out an initial cleaning process with our **RX-523 CLEAN SAL**, applying the material and then scraping it with a hard bristle brush. After mechanically cleaning the surface, it will need to be rinsed with plenty of clean water in order to neutralise any **CLEAN SAL** residue that may remain on the surface.

Any grease or oil must be completely eliminated to allow the product to adhere correctly to the surface. Therefore, we recommend using **RX-527 CLEAN OIL** for correct and total elimination of these substances.

Powdery surfaces must be consolidated with a fixative (**FIJAPREN** line), since dust prevents adhesion between materials. Similarly, old surfaces made up of perished plaster or poorly adhered parts must be cleaned up: **restoring perished surfaces without prior restoration is totally inadvisable**. If there are holes in the surface, these should be scraped down and removed until a consistent surface is created, then a fixative (**FIJAPREN** line) should be applied to remove traces of dust. This consistent surface will usually be made of brick, cement, functional plaster or any other material, as long as it can support the weight and tension of the layers subsequently applied, without breaking up or having its structure altered.

If cracks are present these must be repaired, i.e. opened up and their interiors fixed using a fixative (**FIJAPREN** line), left to dry for at least 4 hours and then filled to the required level. If the cracks are structural, it is required to create perimeter joints in the façade, in order to absorb and/or derive movement.

DIRECTIONS FOR USE

Mix with clean water at a ratio of 28 % (280 ml water for each kg of plaster). Mixing should be carried out manually or mechanically using an electric mixer. Leave the paste to stand for a few minutes and then apply.

For cavity filling, we recommend using a medium sized spatula that allows for good pressure inside the cavity. Where possible, ensure that the width of the spatula is slightly greater than the size of the cavity.

All those areas of a façade that are subject to stress (such as expansion joints or boundary joints of different materials), must be reinforced with fibreglass mesh that is resistant to the alkalinity of the cement in order to avoid cracking of the plaster. The mesh will remain inside (plaster-mesh-plaster) and will extend approximately 25 centimetres each side of these joints subject to stress. We recommend the application of our **RG-116** fibreglass mesh.

When the material is dry, sand it and, if there are no imperfections, apply a fixative and then paint.

R6

EXTERIOR POWDERED PRODUCT



Revox®

TEXTURED EXTERIOR

TECHNICAL CHARACTERISTICS

Useful life	4 - 5 h
Reaction to fire	A1
Maximum granulometry	1400 µm
Maximum thickness per layer	10 mm
pH	12.5 – 13.5
Shore C hardness	64

Drying time in 1 mm layer on concrete surface (*)	4 - 5 h
Mean value of the apparent dry density (S/ UNE-EN 1015-10)	966 kg/m³
Coefficient of water vapour permeability (µ) (S/UNE-EN 1015-19)	4,75
Thermal conductivity (W/mK) (S/UNE-EN 1745:2002)	0.255 W/mK
Tool cleaning	With water

(*) Depends on the environmental conditions, the nature of the surface and the thickness of application.

DENSITY	
POWDER (gr/ml)	PASTE (gr/ml)
1.19 ± 0.07	1.67 ± 0.07

PERFORMANCE	
kilograms of powder applied per m² in 1 mm thickness	1.10 – 1.20

ADHERENCES (on cement/paint substrates - 2 mm layer)	
TEST	RESULT
Initial adhesion (28d)	> 4 Kg/cm²
Ageing with heat	> 5 Kg/cm²
Immersion treatment	> 5 Kg/cm²
Climate Cycles	> 5 Kg/cm²

SUBSCRIPTION (N/mm2 AND FORM OF BREAKING (FP) A,B Ó C SEGÚN UNE-EN 1015-12	
THICKNESS	10 mm layer
SURFACES	Concrete
AVERAGE TENSILE STRENGTH	Superior a 0.5 N/mm²
FP	B (average CF-A failures)

WATER ABSORPTION BY CAPILLARITY (CATEGORIES) ACCORDING TO UNE-EN 1015-18	
CLASSIFICATION	W2

WATER PERMEABILITY AFTER CAPILLARY WATER ABSORPTION TEST ACCORDING TO UNE-EN 1015-21 (ml/cm2 48H)		
THICKNESS	MASONRY SURFACE	CONCRETE SURFACE
1 cm	0.4	0.4

R6

EXTERIOR POWDERED PRODUCT



Revox®

TEXTURED EXTERIOR

INFORMATION OF INTEREST

The Revox range manufacturing process is controlled in batches, which allows traceability of any incident. The quality system used includes each article's design and production controls, both in terms of the raw materials used, guaranteeing uniform manufacturing, and the final item obtained. The use of ecotechnologies in our facilities' manufacturing processes allows for efficient work, without damaging the environment that surrounds us.

- Non-flammable product. Irritating.
- Avoid bringing the product into contact with skin and eyes.
- Smoking, eating and drinking must be prohibited in the application area.
- Comply with workplace health and safety legislation.
- Keep the product in a dry place, in original containers that are kept properly closed.
- Store the containers between 5°C and 35°C.
- Recommended storage time: 12 months from the date of manufacture, in its original packaging and protected from moisture.

For further information on protective measures and first aid, please refer to the product's Safety Data Sheet.

COMMENTS

(1) **REVOX R-6** can be coated with any conventional paint (provided it is breathable and resistant to cement alkalis). If we want to apply a coloured plastic paint on the **R-6** and to avoid it becoming discoloured, we must first apply a coat of our product **RX-517 CONCRETE MICROPRIMER** and then apply the paint normally.

- For appropriate use and correct application of the product, it is essential to first read the technical data sheet.
- The data provided in this data sheet are for guidance only and should not be considered binding. The data has been obtained in normal laboratory conditions and on standardised surfaces, and can vary depending on the conditions in which they are applied (absorption of the surface, applied thickness, temperature, environmental humidity, etc.). The intervals displayed have been shaped by measurement history. Slight deviations from the ranges presented in this technical sheet, whether higher or lower, will be accepted according to internal technical criteria and will not result in a loss of quality or affect the performance of the final product, due, among other factors, to variations in measurement conditions and the uncertainty associated with the instruments used.
- The working conditions of the users are out of our control.
- The product must not be used for purposes other than those specified. We recommend strictly following the recommendations for use.
- Do not exceed the maximum recommended application thickness.
- It is essential that the status of the surfaces be assessed prior to each application.
- Use the product within its useful lifetime. Beyond this time, unfavourable properties may arise.
- Do not apply on wet surfaces.
- Do not apply on non-absorbent or extremely crystalline surfaces.
- Application temperature: from 5°C to 35°C.
- Maximum relative humidity: 85%.
- Do not mix with any material, as the product will not retain its technical characteristics.
- Do not re-mix when the product has started to set.

R6

Revov[®]

TEXTURED EXTERIOR

COMMENTS

- The technical department of **ESTABLECIMIENTOS BAIXENS** states that the designs of recently launched new products are considered to be in an experimental phase until an annual history can be constituted. From then on, the newly designed product is considered to be fully consolidated in the market. In the meantime, **BAIXENS** reserves the right to adapt its variable specifications or working ranges according to technical criteria. The data subject to modification will be identified with an asterisk for easy identification and may be recently created products and / or experimental phase products or improvements in our various ranges due to market needs and / or requirements.
- We place at your disposal a technical-commercial team that will advise you regarding any doubt or query.

PACKAGING

FORMAT	15 Kg	5 Kg	1 Kg
UNIT/BOX	–	4	20
PALLETS	72 SACKS	35 BOXES	36 BOXES



Internal code	R6NF1891A20
---------------	-------------


BAIXENS
 baixens.com

*Testing the
difference*

BAIXENS ESPAÑA
 POL. IND. MONCARRA, S/N
 46230 ALGINET (VALENCIA)
 T.: 961.750.834
 F.: 961.752.471

BAIXENS FRANCE
 14, RUE DU PONT NEUF
 75001 PARIS (FRANCE)
 T.: 0.800.90.14.37
 F.: 0.800.90.20.52

BAIXENS ITALIA / BULOVA
 VIA PIETRO NENNI, 36
 46019 CICOGNARA - MANTOVA (ITALY)
 T.: 0375/88181/790016 F.: 0375/88831
 www.bulova-pennelli.com

BAIXENS PORTUGAL / ARGATINTAS
 AVENIDA PORTAS DO MINHO, Nº 711
 4760 - 706 RIBEIRÃO,
 V.N. FAMALICÃO
 T.: 252 910 030
 www.argatintas.pt