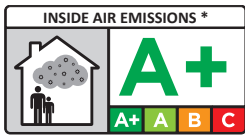


# PX-11

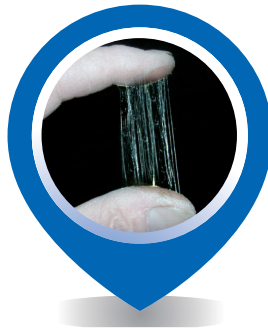
## CONCRETE<sup>®</sup> SOLUTIONS

### RESIVAL

Semi-transparent aqueous adherent solution that acts as a bridge over absorbent surfaces.



\* representative information on the emissions of volatile substances in indoor air that present a toxicological risk by inhalation on a scale from C (high emissions) to A+ (very low emissions).



#### INFORMATION ON DIRECTIVE 2007/42/CE

CATEGORY g1, PRIMERS, WATER-BORNE

Limit: 50 g/l COV (2007); 30 g/l COV (2010)

This product contains < 30 g/l COV max.

## SURFACES

Cement, stone, brick, gypsum and any other absorbent substrate usual in construction.

Substrates must be sound, dry, cohesive, absorbent, well adhered, clean and free of dust.

## CHARACTERISTICS

- Good compatibility with high pH of lime and plaster mortars.
- Semi-transparent finish.
- Improves mortar resistance against low temperatures.
- Confers high performance of adhesion – cohesion.
- Partial or total substitution of water for mixing in adhesive cement or improving its adhesion.

## IDEAL FOR

- Obtaining complete water repellent in concrete and cement masses.

## ON-SITE APPLICATION

### SURFACE PREPARATION

The surface should be healthy, clean, consistent, free of humidity and free of any trace of saltpetre, fungus, micro-organisms, dust, grease or whatever other material that could prevent the good adherence of the product itself.



PX-11

CONCRETE<sup>®</sup>  
SOLUTIONS

RESIVAL

## ON-SITE APPLICATION

### CLEANING

When the supports present traces of fungi, algae or other types of microorganisms, we will proceed with the curative treatment, first of all, with a quick mold cleaner. This will be applied to the surface to be treated and after 5 -10 minutes of action, the support will be cleaned with the help of a pressurized water machine or with a hard bristle brush. Next, and once the support is completely dry, a broad-spectrum biocide cleaner will be applied until the support is completely impregnated. This treatment is called preventive, it is very effective and serves to prevent the future appearance of microorganisms. If there are saltpetre stains on the surface to be treated, carry out an initial cleaning process with our **RX-523 CLEAN SAL**, applying the material and then scraping it with a hard bristle brush. After mechanically cleaning the surface, it will need to be rinsed with plenty of clean water in order to neutralise any **CLEAN SAL** residue that may remain on the surface.

Any grease or oil must be completely eliminated to allow the product to adhere correctly to the surface. Therefore, we recommend using **RX-527 CLEAN OIL** for correct and total elimination of these substances.

Powdery surfaces must be consolidated with a fixative (**FIJAPREN LINE**), since dust prevents adhesion between materials. Similarly, old surfaces made up of perished plaster or poorly adhered parts must be cleaned up: **restoring perished surfaces without prior restoration is totally inadvisable**. If there are holes in the surface, these should be scraped down and removed until a consistent surface is created, then a fixative (**FIJAPREN LINE**) should be applied to remove traces of dust. This consistent surface will usually be made of brick, cement, functional plaster or any other material, as long as it can support the weight and tension of the layers subsequently applied, without breaking up or having its structure altered.

If cracks are present these must be repaired, i.e. opened up and their interiors fixed using a fixative (**FIJAPREN LINE**), left to dry for at least 4 hours and then filled to the required level.

### DIRECTIONS FOR USE

**PX-11 CONCRETE RESIVAL** can be used in a number of ways.

**OPTION 1. DIRECT USE ON OLD MORTAR: CONCRETE RESIVAL** can be applied undiluted on old absorbent substrate. It will act as bonding layer and allow fresh mortar to adhere better to the substrate. When bonding fresh and old mortar, use PX-11 undiluted and apply to the surface with a brush or roller.

**OPTION 2. USE AS AN ADDITIVE IN POWDERED MORTARS: CONCRETE RESIVAL** can be substituted for some or all (at the choice of the trade) of the water used to mix the mortar to provide better adhesion and cohesion to the mortar.

# PX-11

**CONCRETE<sup>®</sup>**  
SOLUTIONS**RESIVAL**

## ON-SITE APPLICATION

### DIRECTIONS FOR USE

OPTION 3. **TOTAL REINFORCEMENT:** If a system needs full reinforcement, **CONCRETE RESIVAL** can be used directly on the substrate as well as being added to fresh mortar.

## TECHNICAL CHARACTERISTICS

Density	1.02 ± 0.07 (g/ml)
Fire resistance	A2 – s1– d0
pH	6.5 - 8.5
Brookfield's viscosity	1000 - 2500 cP (A/2/10)
Content of solids	9 - 14 % by weight
Tools cleaning	Use water

## INFORMATION OF INTEREST

The manufacturing process is controlled in batches, which allows traceability in the case of any incident. The quality control system used includes, the individual design and development of each article, both with the raw materials used confirming manufacturing uniformity, as well as the final product obtained. The use in our facilities of eco-technology in the manufacturing process allows the completion of environmentally friendly efficient work.

- Non-flammable product.
- Avoid contact with eyes and skin.
- Smoking, eating or drinking in the area of use is prohibited.
- Comply with Health and Safety at Work Executive regulations.
- Store the product in a dry place, in its original packaging firmly closed and free from humidity.
- Store the containers between 5°C and 35°C.
- Recommended storage time: 12 months as from date of manufacture, closed in its original packing and away from humidity.

Further information relative to protection measures and first aid, check Product Safety Sheet.

PX-11

**CONCRETE<sup>®</sup>**  
SOLUTIONS

RESIVAL

## OBSERVATIONS

- The reading of this product's data sheet is indispensable for the correct use and application.
- The data provided in this data sheet are for guidance only and should not be considered binding. The data has been obtained in normal laboratory conditions and on standardised surfaces, and can vary depending on the conditions in which they are applied (absorption of the surface, applied thickness, temperature, environmental humidity, etc.). The intervals displayed have been shaped by measurement history. Slight deviations from the ranges presented in this technical sheet, whether higher or lower, will be accepted according to internal technical criteria and will not result in a loss of quality or affect the performance of the final product, due, among other factors, to variations in measurement conditions and the uncertainty associated with the instruments used.
- Work conditions of the user are out of our control.
- The product should not be utilized for other uses except the ones indicated. It is advisable to follow strictly the recommendations of use given.
- A previous inspection of the state of the surface before use is fundamental.
- Do not use outdoors in icy temperatures or days that forecasts rain.
- Do not apply on extremely crystalline surfaces.
- It will lose its technical features if mixed with any other material. Do not add more than the recommended amount of water.
- Do not apply in temperatures under 5°C or over 35°C.
- **ESTABLECIMIENTOS BAIXENS'** technical department informs that the new designs in the development of recent launches are considered in their experimental phase until an annual revision is made. From this point on, the product of a recent launch is considered as being totally consolidated in the market. In the meantime, **ESTABLECIMIENTOS BAIXENS** reserves its right to adapt the variable specifications or ranges of work, according to technical criteria. The information subject to modification, will be identified with an asterisk at the top for easy recognition of those products which are the subject of new creation or are subject to an experimental phase or improvement in our different ranges because of market demand and or needs.
- We have a technical-sales team at your disposal for technical advice or consultation.

## PACKAGING

FORMAT	25 kg	10 kg	5 kg	1 kg
UNITS/CASE	-	-	2	9
PALLETS	24	60	60 cases	48 cases



Internal code	PX11NF91A23
---------------	-------------