

DECORATIVE PAINTS.

Technical Data Sheets.



BAIXENS

baixens.com

TESTING THE DIFFERENCE



BAIXENS

baixens.com

*Testing the
difference*



ColoryPaint

The range of paints ColoryPaint is made up of 26 types of paints expressly created to facilitate the work of the professional painter and adapt to his wide range of needs. Therefore, its excellent performance, its docility in application and its high coverage are qualities that our area R+D+i has considered essential in its formulation.

ColoryPaint is a range composed of interior and exterior paints, with multiple finishes and characteristics: matt, satin, vinyl, acrylic, siloxane-based, etc. Furthermore, they do not turn yellow, are non-splash, breathable and washable.

In this way, the professional has at his disposal, an extensive line of paints that allows him to tackle the jobs that require a quick and professional solution to even the most decorative requirements that demand the care of even the smallest detail.



Do it white.

INDEX

Technical Data Sheets.

Decorative Paints

Paints.

Acrylic

- BX-100 ColoryPaint Green Label
- BX-105 ColoryPaint Red Label
- BX-200 ColoryPaint Silver Label
- BX-210 ColoryPaint Black Label
- BX-215 ColoryPaint Yellow Label
- BX-225 ColoryPaint Blue Label
- BX-240 ColoryPaint Gold Label
- BX-250 ColoryPaint Platinum Label
- BX-260 ColoryPaint Titanium Label
- BX-400A ColoryPaint Purple Label – Acrylic

Vinyl

- BX-230 ColoryPaint Orange Label
- BX-235 ColoryPaint Frozen Label
- BX-400V ColoryPaint Purple Label – Vinyl

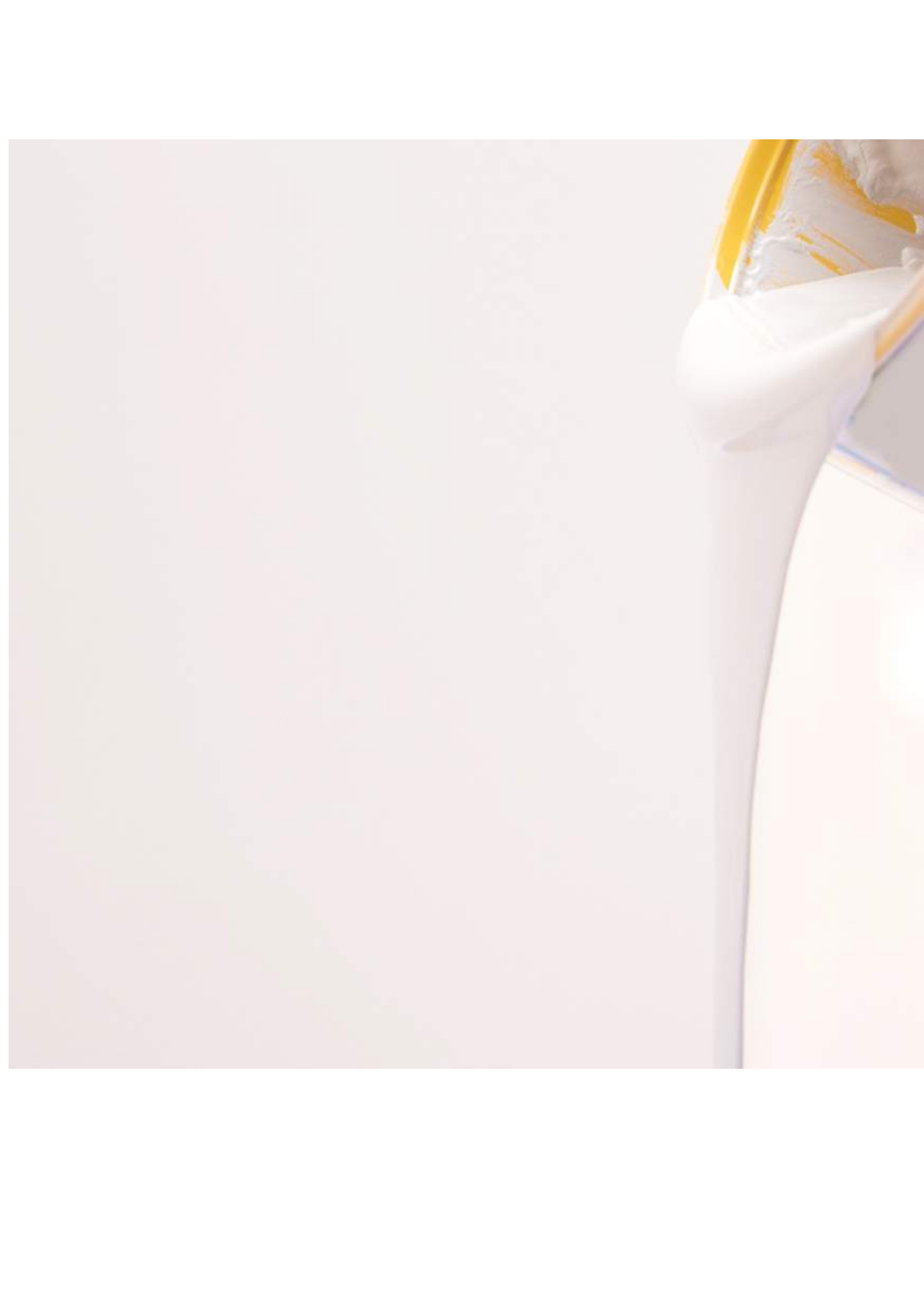
Anti-Mold Paints (CPA).

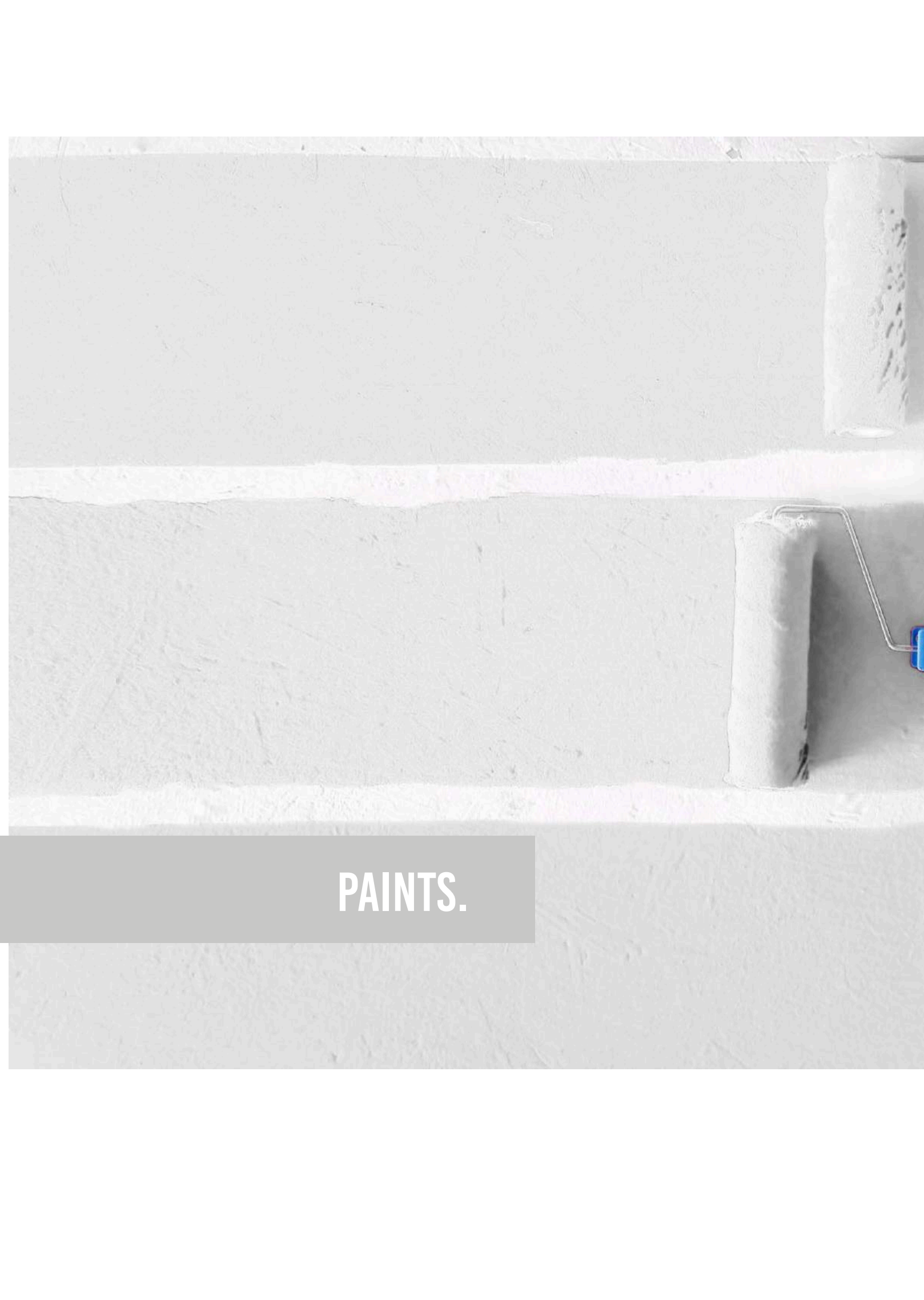
Acrylic

- BX-100 CPA ColoryPaint Green Label
- BX-105 CPA ColoryPaint Red Label
- BX-200 CPA ColoryPaint Silver Label
- BX-210 CPA ColoryPaint Black Label
- BX-215 CPA ColoryPaint Yellow Label
- BX-225 CPA ColoryPaint Blue Label
- BX-240 CPA ColoryPaint Gold Label
- BX-250 CPA ColoryPaint Platinum Label
- BX-260 CPA ColoryPaint Titanium Label
- BX-400A CPA ColoryPaint Purple Label – Acrylic

Vinyl

- BX-230 CPA ColoryPaint Orange Label
- BX-235 CPA ColoryPaint Frozen Label
- BX-400V CPA ColoryPaint Purple Label – Vinyl





PAINTS.



BX-100

ColoryPaint

GREEN LABEL

Acrylic matt paint for interior use – sheltered outdoors



SUBSTRATES

Cement, brick, plaster, paint, plaster-board boards, parameters with nooks/plastering and masonry in general.
Substrates must be sound, dry, cohesive, absorbent, well adhered, clean and free of dust.

PROPERTIES

- Matt finish
- White colour
- Does not yellow
- Easy to apply
- Good covering after drying
- Does not splash
- Good performance

IDEAL FOR

- Painting walls, ceilings and gypsum substrates

HOW TO USE

PREPARING THE SUBSTRATE

The substrate should be healthy, clean, strong, well adhered, consistent and be free of any trace of saltpetre, fungus, micro-organisms, grease, defocussing oils and in general any type of material that could hinder the adhesion of the product to the base.

INFORMATION ON DIRECTIVE 2004/42/CE

A1 CATEGORY. MATT PRODUCTS FOR WALLS AND CEILINGS
(BRIGHTNESS <25 to 60°) WATER-BASED

Limit: 75 g/l COV (2007); 30 g/l COV (2010)
This product contains 0,44 g/l COV max.



BX-100**ColoryPaint****GREEN LABEL**

HOW TO USE

APPLICATION CONDITIONS

Shake the product until complete equalization.

Can be applied using brush, roller or airless spray.

Protect the areas that are not to be painted (skirting, switches, door/window frames) with painting tape and/or paper.

Remove once finished and before the paint has dried in order to avoid stripping the paint.

- New masonry substrates:

The first coat can be diluted with a maximum of 5 - 10% always use clean drinking water. The second coat can be applied diluted with a maximum of 5 %.

- Old masonry substrates:

In the case of dead old gypsum or dusty bases substrates, the dust has to be cleaned off the surface and the use of **RX-501 SOLVENT-BASED FIJAPREN** as a primer and hardener, or the use of **RX-500 WATER-BASED FIJAPREN**. Once finished continue as if it was a new masonry substrate.

- Painted substrates:

Check that the paint is clean and well adhered. If on the contrary, paint should be removed by sanding or by any other convenient method (depending on the base), set the substrate using **RX-501 or RX-500** and proceed as if it was a new masonry substrate.

- Substrates with disorders:

When surface shows traces of fungus, algae or other types of micro-organisms, firstly proceed with our healing treatment **RX-524 CLEAN MICRO**. This is to be applied on the surface to be treated, and after 25 - 30 minutes performance, proceed in cleansing the substrate with the aid of a water pressure machine or a hard bristle brush.

Once completely dried, proceed in reapplying **RX-524 CLEAN MICRO** until it is completely impregnated. This treatment is called preventive, it is very effective and helps to prevent the future appearance of micro-organisms.

In the case of saltpetre stains, proceed in applying our **RX-523 CLEAN SAL**. When the product is dry, scrape the surface with the aid of a hard bristle brush. After the mechanical cleansing of the surface, rinse with clean water in order to neutralize any remaining **CLEAN SAL** residue that could still be on the substrate.

The presence of oils or grease, especially on metal sheets should be completely removed in order to allow a correct adhesion of the product on the substrate. We recommend the use of **RX-527 CLEAN OIL** for the correct and total removal of these substances

BX-100**ColoryPaint****GREEN LABEL****TECHNICAL FEATURES**

Quality	Acrylic
Solid contents	43 – 45 % in weight
Resistance to wet scrubbing (UNE EN ISO 11998)	Class 5
Density	1,36 ± 0,07 g/ml
Brookfield viscosity	10000 -18000 cP. (A/4/10)
PH	8.0 - 10.0
Conservation	12 months
Cleaning of tools	Use water
Speculated shine (UNE-EN ISO 2813)	Deep matt

INFORMATION ON DIRECTIVE 2004/42/CE CATEGORY a1

COV LIMIT	COV CONTENT
75 g/l (2007) – 30 g/l (2010)	0,44 g/l maximum

DRYING TIME (*)

TO THE TOUCH	REPAINTED	TOTAL
30' - 60'	3 - 4 hrs	15 days

(*) Drying time is influenced by the room temperature, relative humidity of the air and the absorption of the substrate.

THEORETICAL PERFORMANCE (**)

m ² applied per litre	4 - 9
----------------------------------	-------

(*) The practical performance depends on the substrate (type, state and absorption) the application method and the grade of dilution.

INFORMATION OF INTEREST

The manufacturing process of the paints is controlled in batches, which allows traceability in the case of any incident. The quality control system used includes, the individual design and development of each product, both with the raw materials used confirming manufacturing uniformity, as well as the final product obtained. The use in our facilities of eco-technology in the manufacturing process allows the completion of environmentally friendly efficient work.

- Non-flammable product.
- Avoid contact with eyes and skin.
- Smoking, eating or drinking in the area of use is prohibited.
- Comply with Health and Safety at Work Executive regulations.
- Store the product in a dry place, in its original packaging firmly closed and free from humidity.
- Store the containers between 5°C and 35°C.
- Recommended storage time: 12 months as from date of manufacture in its original packaging and kept free from humidity.

For further information on protective measures and first aid, consult the product Safety Data Sheet.

BX-100

ColoryPaint

GREEN LABEL

OBSERVATIONS

- The reading of this product's data sheet is indispensable for the correct use and application.
- The principles given in this data sheet have been obtained under normal laboratory conditions and on normal surfaces, results may vary, depending on the conditions of construction, (absorption of the surface, thickness applied, mixing water, temperature and humidity). The intervals exhibited have been obtained by means of historical measures. Slight high or low deviations to ranges presented in this technical data sheet will be admitted according to internal technical criteria and do not cause decrease in quality or will it affect the final performance of the product, being due, amongst other factors, to variations in the conditions of measure or uncertainty associated with the instruments used.
- Work conditions of the user are out of our control.
- The product should not be utilized for other uses except the ones indicated. It is advisable to follow strictly the recommendations of use given.
- A previous inspection of the state of the surface before use is fundamental.
- Do not apply on substrates with temperatures a lower than 5°C or excessively hot.
- Do not mix with any other material, it would lose its technical features.
- Painting on rainy days or maximum heat of the day is not recommended.
- Ideal temperature for applying from 5°C to 35°C.
- Maximum relative humidity: 85%.
- **ESTABLECIMIENTOS BAIXENS'** technical department informs that the new designs in the development of recent launches are considered in their experimental phase until an annual revision is made. From this point on, the product of a recent launch is considered as being totally consolidated in the market. In the meantime, **BAIXENS** reserves its right to adapt the variable specifications or ranges of work, according to technical criteria. The information subject to modification, will be identified with an asterisk at the top for easy recognition of those products which are the subject of new creation or are subject to an experimental phase or improvement in our different ranges because of market demand and or needs.
- We have a technical-sales team at your disposal for technical advice or consultation.

PACKAGING

FORMAT	13 l.	4 l.
UNITS/CASE	-	-
PALLETS	33 BUCKETS	120 BUCKETS



IPC BX100NF2569A20


BAIXENS
 baixens.com

Testing the difference

BAIXENS ESPAÑA / PORTUGAL
 POL. IND. MONCARRA, S/N
 46230 ALGINET (VALENCIA)
 T.: 961.750.834
 F.: 961.752.471

BAIXENS FRANCE
 14, RUE DU PONT NEUF
 75001 PARIS (FRANCE)
 T.: 0.800.90.14.37
 F.: 0.800.90.20.52

BAIXENS ITALIA / BULOVA
 VIA PIETRO NENNI, 36
 46019 CICOGNARA - MANTOVA (ITALY)
 T.: 0375/88181/790016 F.: 0375/88831
 www.bulova-pennelli.com

BAIXENS PORTUGAL / ARGATINTAS
 AVENIDA PORTAS DO MINHO, Nº 711
 4760 - 706 RIBEIRÃO,
 V.N. FAMALICÃO
 T.: 252 910 030
 www.argatintas.pt

BX-105

ColoryPaint

RED LABEL

Acrylic matt paint for interior and exterior use



INFORMATION ON DIRECTIVE 2004/42/CE

A1 CATEGORY. MATT PRODUCTS FOR WALLS AND CEILINGS
(BRIGHTNESS <25 to 60°) WATER-BASED

Limit: 75 g/l COV (2007); 30 g/l COV (2010)
This product contains 18,86 g/l COV max.

SUBSTRATES

Cement, brick, plaster, paint, plaster-board boards, parameters with nooks/plastering and masonry in general.

Substrates must be sound, dry, cohesive, absorbent, well adhered, clean and free of dust.

PROPERTIES

- Matt finish
- White colour
- Does not yellow
- Easy to apply
- Breathable
- High coverage
- Does not splash
- Good performance
- No splices
- Washable

IDEAL FOR

- Painting walls, ceilings and gypsum substrates

HOW TO USE

PREPARING THE SUBSTRATE

The substrate should be healthy, clean, strong, well adhered, consistent and be free of any trace of saltpetre, fungus, micro-organisms, grease, defocussing oils and in general any type of material that could hinder the adhesion of the product to the base.



BX-105**ColoryPaint****RED LABEL**

HOW TO USE

APPLICATION CONDITIONS

Shake the product until complete equalization.

Can be applied using brush, roller or airless spray.

Protect the areas that are not to be painted (skirting, switches, door/window frames) with painting tape and/or paper.

Remove once finished and before the paint has dried in order to avoid stripping the paint.

- New masonry substrates:

The first coat can be diluted with a maximum of 5 - 10% always use clean drinking water. The second coat can be applied diluted with a maximum of 5 %.

- Old masonry substrates:

In the case of dead old gypsum or dusty bases substrates, the dust has to be cleaned off the surface and the use of **RX-501 SOLVENT-BASED FIJAPREN** as a primer and hardener, or the use of **RX-500 WATER-BASED FIJAPREN**. Once finished continue as if it was a new masonry substrate.

- Painted substrates:

Check that the paint is clean and well adhered. If on the contrary, paint should be removed by sanding or by any other convenient method (depending on the base), set the substrate using **RX-501 or RX-500** and proceed as if it was a new masonry substrate.

- Substrates with disorders:

When surface shows traces of fungus, algae or other types of micro-organisms, firstly proceed with our healing treatment **RX-524 CLEAN MICRO**. This is to be applied on the surface to be treated, and after 25 - 30 minutes performance, proceed in cleansing the substrate with the aid of a water pressure machine or a hard bristle brush.

Once completely dried, proceed in reapplying **RX-524 CLEAN MICRO** until it is completely impregnated. This treatment is called preventive, it is very effective and helps to prevent the future appearance of micro-organisms.

In the case of saltpetre stains, proceed in applying our **RX-523 CLEAN SAL**. When the product is dry, scrape the surface with the aid of a hard bristle brush. After the mechanical cleansing of the surface, rinse with clean water in order to neutralize any remaining **CLEAN SAL** residue that could still be on the substrate.

The presence of oils or grease, especially on metal sheets should be completely removed in order to allow a correct adhesion of the product on the substrate. We recommend the use of **RX-527 CLEAN OIL** for the correct and total removal of these substances

BX-105**ColoryPaint****RED LABEL****TECHNICAL FEATURES**

Quality	Acrylic
Solid contents	69 – 74 % in weight
Resistance to wet scrubbing (UNE EN ISO 11998)	Class 3
Density	1,73 ± 0,07 g/ml
Brookfield viscosity	18000 -28000 cP. (A/5/10)
PH	8.0 - 10.0
Conservation	12 months
Cleaning of tools	Use water
Speculated shine (UNE-EN ISO 2813)	Deep matt

INFORMATION ON DIRECTIVE 2004/42/CE CATEGORY a1

COV LIMIT	COV CONTENT
75 g/l (2007) – 30 g/l (2010)	18,86 g/l maximum

DRYING TIME (*)

TO THE TOUCH	REPAINTED	TOTAL
30' - 60'	3 - 4 hrs	15 days

(*) Drying time is influenced by the room temperature, relative humidity of the air and the absorption of the substrate.

THEORETICAL PERFORMANCE (**)

m ² applied per litre	9 - 14
----------------------------------	--------

(*) The practical performance depends on the substrate (type, state and absorption) the application method and the grade of dilution.

INFORMATION OF INTEREST

The manufacturing process of the paints is controlled in batches, which allows traceability in the case of any incident. The quality control system used includes, the individual design and development of each product, both with the raw materials used confirming manufacturing uniformity, as well as the final product obtained. The use in our facilities of eco-technology in the manufacturing process allows the completion of environmentally friendly efficient work.

- Non-flammable product.
- Avoid contact with eyes and skin.
- Smoking, eating or drinking in the area of use is prohibited.
- Comply with Health and Safety at Work Executive regulations.
- Store the product in a dry place, in its original packaging firmly closed and free from humidity.
- Store the containers between 5°C and 35°C.
- Recommended storage time: 12 months as from date of manufacture in its original packaging and kept free from humidity.

For further information on protective measures and first aid, consult the product Safety Data Sheet.

BX-105**ColoryPaint****RED LABEL****OBSERVATIONS**

- The reading of this product's data sheet is indispensable for the correct use and application.
- The principles given in this data sheet have been obtained under normal laboratory conditions and on normal surfaces, results may vary, depending on the conditions of construction, (absorption of the surface, thickness applied, mixing water, temperature and humidity). The intervals exhibited have been obtained by means of historical measures. Slight high or low deviations to ranges presented in this technical data sheet will be admitted according to internal technical criteria and do not cause decrease in quality or will it affect the final performance of the product, being due, amongst other factors, to variations in the conditions of measure or uncertainty associated with the instruments used.
- Work conditions of the user are out of our control.
- The product should not be utilized for other uses except the ones indicated. It is advisable to follow strictly the recommendations of use given.
- A previous inspection of the state of the surface before use is fundamental.
- Do not apply on substrates with temperatures a lower than 5°C or excessively hot.
- Do not mix with any other material, it would lose its technical features.
- Painting on rainy days or maximum heat of the day is not recommended.
- Ideal temperature for applying from 5°C to 35°C.
- Maximum relative humidity: 85%.
- **ESTABLECIMIENTOS BAIXENS'** technical department informs that the new designs in the development of recent launches are considered in their experimental phase until an annual revision is made. From this point on, the product of a recent launch is considered as being totally consolidated in the market. In the meantime, **BAIXENS** reserves its right to adapt the variable specifications or ranges of work, according to technical criteria. The information subject to modification, will be identified with an asterisk at the top for easy recognition of those products which are the subject of new creation or are subject to an experimental phase or improvement in our different ranges because of market demand and or needs.
- We have a technical-sales team at your disposal for technical advice or consultation.

PACKAGING

FORMAT	13 l.	4 l.
UNITS/CASE	-	-
PALLETS	33 BUCKETS	120 BUCKETS



IPC BX105NF2261A20


BAIXENS
 baixens.com

Testing the difference

BAIXENS ESPAÑA / PORTUGAL
 POL. IND. MONCARRA, S/N
 46230 ALGINET (VALENCIA)
 T.: 961.750.834
 F.: 961.752.471

BAIXENS FRANCE
 14, RUE DU PONT NEUF
 75001 PARIS (FRANCE)
 T.: 0.800.90.14.37
 F.: 0.800.90.20.52

BAIXENS ITALIA / BULOVA
 VIA PIETRO NENNI, 36
 46019 CICOGNARA - MANTOVA (ITALY)
 T.: 0375/88181/790016 F.: 0375/88831
 www.bulova-pennelli.com

BAIXENS PORTUGAL / ARGATINTAS
 AVENIDA PORTAS DO MINHO, Nº 711
 4760 - 706 RIBEIRÃO,
 V.N. FAMALICÃO
 T.: 252 910 030
 www.argatintas.pt

BX-200

ColoryPaint

SILVER LABEL

Water-based great white matt finish acrylic paint



INFORMATION ON DIRECTIVE 2004/42/CE

A1 CATEGORY. MATT PRODUCTS FOR WALLS AND CEILINGS
(BRIGHTNESS <25 to 60°) WATER-BASED

Limit: 75 g/l COV (2007); 30 g/l COV (2010)
This product contains 17,79 g/l COV max.

SUBSTRATES

Cement, brick, plaster, paint, plaster-board boards, parameters with nooks/ plastering and masonry in general.

Substrates must be sound, dry, cohesive, absorbent, well adhered, clean and free of dust.

PROPERTIES

- Matt finish
- White colour
- Easy to apply
- Breathable
- Good coverage
- Does not splash
- Washable

IDEAL FOR

- Painting walls, ceilings, façades and gypsum substrates

HOW TO USE

PREPARING THE SUBSTRATE

The substrate should be healthy, clean, strong, well adhered, consistent and be free of any trace of saltpetre, fungus, micro-organisms, grease, defocussing oils and in general any type of material that could hinder the adhesion of the product to the base.



BX-200**ColoryPaint****SILVER LABEL**

HOW TO USE

APPLICATION CONDITIONS

Shake the product until complete equalization.

Can be applied using brush, roller or airless spray.

Protect the areas that are not to be painted (skirting, switches, door/window frames) with painting tape and/or paper.

Remove once finished and before the paint has dried in order to avoid stripping the paint.

- New masonry substrates:

The first coat can be diluted with a maximum of 5 - 10% always use clean drinking water. The second coat can be applied diluted with a maximum of 5 %.

- Old masonry substrates:

In the case of dead old gypsum or dusty bases substrates, the dust has to be cleaned off the surface and the use of **RX-501 SOLVENT-BASED FIJAPREN** as a primer and hardener, or the use of **RX-500 WATER-BASED FIJAPREN**. Once finished continue as if it was a new masonry substrate.

- Painted substrates:

Check that the paint is clean and well adhered. If on the contrary, paint should be removed by sanding or by any other convenient method (depending on the base), set the substrate using **RX-501 or RX-500** and proceed as if it was a new masonry substrate.

- Substrates with disorders:

When surface shows traces of fungus, algae or other types of micro-organisms, firstly proceed with our healing treatment **RX-524 CLEAN MICRO**. This is to be applied on the surface to be treated, and after 25 - 30 minutes performance, proceed in cleansing the substrate with the aid of a water pressure machine or a hard bristle brush.

Once completely dried, proceed in reapplying **RX-524 CLEAN MICRO** until it is completely impregnated. This treatment is called preventive, it is very effective and helps to prevent the future appearance of micro-organisms.

In the case of saltpetre stains, proceed in applying our **RX-523 CLEAN SAL**. When the product is dry, scrape the surface with the aid of a hard bristle brush. After the mechanical cleansing of the surface, rinse with clean water in order to neutralize any remaining **CLEAN SAL** residue that could still be on the substrate.

The presence of oils or grease, especially on metal sheets should be completely removed in order to allow a correct adhesion of the product on the substrate. We recommend the use of **RX-527 CLEAN OIL** for the correct and total removal of these substances

BX-200**ColoryPaint****SILVER LABEL****TECHNICAL FEATURES**

Quality	Acrylic
Solid contents	54 – 59 % in weight
Resistance to wet scrubbing (UNE EN ISO 11998)	Class 3
Density	1,50 ± 0,07 g/ml
Brookfield viscosity	14000 -21000 cP. (A/4/10)
PH	8.0 - 10.0
Conservation	12 months
Cleaning of tools	Use water
Speculated shine (UNE-EN ISO 2813)	Deep matt

INFORMATION ON DIRECTIVE 2004/42/CE CATEGORY a1

COV LIMIT	COV CONTENT
75 g/l (2007) – 30 g/l (2010)	17,79 g/l maximum

DRYING TIME (*)

TO THE TOUCH	REPAINTED	TOTAL
30'	3 - 4 hrs	15 days

(*) Drying time is influenced by the room temperature, relative humidity of the air and the absorption of the substrate.

THEORETICAL PERFORMANCE (**)

m ² applied per litre	13 - 18
----------------------------------	---------

(*) The practical performance depends on the substrate (type, state and absorption) the application method and the grade of dilution.

INFORMATION OF INTEREST

The manufacturing process of the paints is controlled in batches, which allows traceability in the case of any incident. The quality control system used includes, the individual design and development of each product, both with the raw materials used confirming manufacturing uniformity, as well as the final product obtained. The use in our facilities of eco-technology in the manufacturing process allows the completion of environmentally friendly efficient work.

- Non-flammable product.
- Avoid contact with eyes and skin.
- Smoking, eating or drinking in the area of use is prohibited.
- Comply with Health and Safety at Work Executive regulations.
- Store the product in a dry place, in its original packaging firmly closed and free from humidity.
- Store the containers between 5°C and 35°C.
- Recommended storage time: 12 months as from date of manufacture in its original packaging and kept free from humidity.

For further information on protective measures and first aid, consult the product Safety Data Sheet.

BX-200**ColoryPaint****SILVER LABEL****OBSERVATIONS**

- The reading of this product's data sheet is indispensable for the correct use and application.
- The principles given in this data sheet have been obtained under normal laboratory conditions and on normal surfaces, results may vary, depending on the conditions of construction, (absorption of the surface, thickness applied, mixing water, temperature and humidity). The intervals exhibited have been obtained by means of historical measures. Slight high or low deviations to ranges presented in this technical data sheet will be admitted according to internal technical criteria and do not cause decrease in quality or will it affect the final performance of the product, being due, amongst other factors, to variations in the conditions of measure or uncertainty associated with the instruments used.
- Work conditions of the user are out of our control.
- The product should not be utilized for other uses except the ones indicated. It is advisable to follow strictly the recommendations of use given.
- A previous inspection of the state of the surface before use is fundamental.
- Do not apply on substrates with temperatures a lower than 5°C or excessively hot.
- Do not mix with any other material, it would lose its technical features.
- Painting on rainy days or maximum heat of the day is not recommended.
- Ideal temperature for applying from 5°C to 35°C.
- Maximum relative humidity: 85%.
- **ESTABLECIMIENTOS BAIXENS'** technical department informs that the new designs in the development of recent launches are considered in their experimental phase until an annual revision is made. From this point on, the product of a recent launch is considered as being totally consolidated in the market. In the meantime, **BAIXENS** reserves its right to adapt the variable specifications or ranges of work, according to technical criteria. The information subject to modification, will be identified with an asterisk at the top for easy recognition of those products which are the subject of new creation or are subject to an experimental phase or improvement in our different ranges because of market demand and or needs.
- We have a technical-sales team at your disposal for technical advice or consultation.

PACKAGING

FORMAT	13 l.	4 l.
UNITS/CASE	-	-
PALLETS	33 BUCKETS	120 BUCKETS



IPC BX200NF2453A20


BAIXENS
 baixens.com

Testing the difference

BAIXENS ESPAÑA / PORTUGAL
 POL. IND. MONCARRA, S/N
 46230 ALGINET (VALENCIA)
 T.: 961.750.834
 F.: 961.752.471

BAIXENS FRANCE
 14, RUE DU PONT NEUF
 75001 PARIS (FRANCE)
 T.: 0.800.90.14.37
 F.: 0.800.90.20.52

BAIXENS ITALIA / BULOVA
 VIA PIETRO NENNI, 36
 46019 CICOGNARA - MANTOVA (ITALY)
 T.: 0375/88181/790016 F.: 0375/88831
 www.bulova-pennelli.com

BAIXENS PORTUGAL / ARGATINTAS
 AVENIDA PORTAS DO MINHO, Nº 711
 4760 - 706 RIBEIRÃO,
 V.N. FAMALICÃO
 T.: 252 910 030
 www.argatintas.pt

BX-210

ColoryPaint

BLACK LABEL

High cover matt finish acrylic paint



INFORMATION ON DIRECTIVE 2004/42/CE

A1 CATEGORY. MATT PRODUCTS FOR WALLS AND CEILINGS
(BRIGHTNESS <25 to 60°) WATER-BASED

Limit: 75 g/l COV (2007); 30 g/l COV (2010)
This product contains 3,38 g/l COV max.

SUBSTRATES

Cement, brick, plaster, paint, plaster-board boards, parameters with nooks/ plastering and masonry in general.

Substrates must be sound, dry, cohesive, absorbent, well adhered, clean and free of dust.

PROPERTIES

- | | |
|----------------------|------------------------|
| • Matt finish | • Does not turn yellow |
| • Good workability | • Low odour |
| • White colour | • Washable |
| • Breathable | • Easy to repair |
| • Excellent coverage | • Quick dry |
| • Does not splash | • Good performance |



IDEAL FOR

- Painting walls, ceilings, façades and gypsum substrates

HOW TO USE

PREPARING THE SUBSTRATE

The substrate should be healthy, clean, strong, well adhered, consistent and be free of any trace of saltpetre, fungus, micro-organisms, grease, defocussing oils and in general any type of material that could hinder the adhesion of the product to the base.

BX-210**ColoryPaint****BLACK LABEL**

HOW TO USE

APPLICATION CONDITIONS

Shake the product until complete equalization.

Can be applied using brush, roller or airless spray.

Protect the areas that are not to be painted (skirting, switches, door/window frames) with painting tape and/or paper.

Remove once finished and before the paint has dried in order to avoid stripping the paint.

- New masonry substrates:

The first coat can be diluted with a maximum of 5 - 10% always use clean drinking water. The second coat can be applied diluted with a maximum of 5 %.

- Old masonry substrates:

In the case of dead old gypsum or dusty bases substrates, the dust has to be cleaned off the surface and the use of **RX-501 SOLVENT-BASED FIJAPREN** as a primer and hardener, or the use of **RX-500 WATER-BASED FIJAPREN**. Once finished continue as if it was a new masonry substrate.

- Painted substrates:

Check that the paint is clean and well adhered. If on the contrary, paint should be removed by sanding or by any other convenient method (depending on the base), set the substrate using **RX-501 or RX-500** and proceed as if it was a new masonry substrate.

- Substrates with disorders:

When surface shows traces of fungus, algae or other types of micro-organisms, firstly proceed with our healing treatment **RX-524 CLEAN MICRO**. This is to be applied on the surface to be treated, and after 25 - 30 minutes performance, proceed in cleansing the substrate with the aid of a water pressure machine or a hard bristle brush.

Once completely dried, proceed in reapplying **RX-524 CLEAN MICRO** until it is completely impregnated. This treatment is called preventive, it is very effective and helps to prevent the future appearance of micro-organisms.

In the case of saltpetre stains, proceed in applying our **RX-523 CLEAN SAL**. When the product is dry, scrape the surface with the aid of a hard bristle brush. After the mechanical cleansing of the surface, rinse with clean water in order to neutralize any remaining **CLEAN SAL** residue that could still be on the substrate.

The presence of oils or grease, especially on metal sheets should be completely removed in order to allow a correct adhesion of the product on the substrate. We recommend the use of **RX-527 CLEAN OIL** for the correct and total removal of these substances

BX-210**ColoryPaint****BLACK LABEL****TECHNICAL FEATURES**

Quality	Acrylic
Solid contents	56 – 61 % in weight
Resistance to wet scrubbing (UNE EN ISO 11998)	Class 3
Density	1,55 ± 0,07 g/ml
Brookfield viscosity	16000 -23000 cP. (A/5/10)
PH	8.0 - 10.0
Conservation	12 months
Cleaning of tools	Use water
Speculated shine (UNE-EN ISO 2813)	Deep matt

INFORMATION ON DIRECTIVE 2004/42/CE CATEGORY a1

COV LIMIT	COV CONTENT
75 g/l (2007) – 30 g/l (2010)	3,38 g/l maximum

DRYING TIME (*)

TO THE TOUCH	REPAINTED	TOTAL
60'	6 hrs	15 days

(*) Drying time is influenced by the room temperature, relative humidity of the air and the absorption of the substrate.

THEORETICAL PERFORMANCE (**)

m ² applied per litre	9 - 14
----------------------------------	--------

(*) The practical performance depends on the substrate (type, state and absorption) the application method and the grade of dilution.

INFORMATION OF INTEREST

The manufacturing process of the paints is controlled in batches, which allows traceability in the case of any incident. The quality control system used includes, the individual design and development of each product, both with the raw materials used confirming manufacturing uniformity, as well as the final product obtained. The use in our facilities of eco-technology in the manufacturing process allows the completion of environmentally friendly efficient work.

- Non-flammable product.
- Avoid contact with eyes and skin.
- Smoking, eating or drinking in the area of use is prohibited.
- Comply with Health and Safety at Work Executive regulations.
- Store the product in a dry place, in its original packaging firmly closed and free from humidity.
- Store the containers between 5°C and 35°C.
- Recommended storage time: 12 months as from date of manufacture in its original packaging and kept free from humidity.

For further information on protective measures and first aid, consult the product Safety Data Sheet.

BX-210**ColoryPaint****BLACK LABEL****OBSERVATIONS**

- The reading of this product's data sheet is indispensable for the correct use and application.
- The principles given in this data sheet have been obtained under normal laboratory conditions and on normal surfaces, results may vary, depending on the conditions of construction, (absorption of the surface, thickness applied, mixing water, temperature and humidity). The intervals exhibited have been obtained by means of historical measures. Slight high or low deviations to ranges presented in this technical data sheet will be admitted according to internal technical criteria and do not cause decrease in quality or will it affect the final performance of the product, being due, amongst other factors, to variations in the conditions of measure or uncertainty associated with the instruments used.
- Work conditions of the user are out of our control.
- The product should not be utilized for other uses except the ones indicated. It is advisable to follow strictly the recommendations of use given.
- A previous inspection of the state of the surface before use is fundamental.
- Do not apply on substrates with temperatures a lower than 5°C or excessively hot.
- Do not mix with any other material, it would lose its technical features.
- Painting on rainy days or maximum heat of the day is not recommended.
- Ideal temperature for applying from 5°C to 35°C.
- Maximum relative humidity: 85%.
- **ESTABLECIMIENTOS BAIXENS'** technical department informs that the new designs in the development of recent launches are considered in their experimental phase until an annual revision is made. From this point on, the product of a recent launch is considered as being totally consolidated in the market. In the meantime, **BAIXENS** reserves its right to adapt the variable specifications or ranges of work, according to technical criteria. The information subject to modification, will be identified with an asterisk at the top for easy recognition of those products which are the subject of new creation or are subject to an experimental phase or improvement in our different ranges because of market demand and or needs.
- We have a technical-sales team at your disposal for technical advice or consultation.

PACKAGING

FORMAT	13 l.	4 l.
UNITS/CASE	-	-
PALLETS	33 BUCKETS	120 BUCKETS



IPC BX210NF2254A20


BAIXENS
 baixens.com

Testing the difference

BAIXENS ESPAÑA / PORTUGAL
 POL. IND. MONCARRA, S/N
 46230 ALGINET (VALENCIA)
 T.: 961.750.834
 F.: 961.752.471

BAIXENS FRANCE
 14, RUE DU PONT NEUF
 75001 PARIS (FRANCE)
 T.: 0.800.90.14.37
 F.: 0.800.90.20.52

BAIXENS ITALIA / BULOVA
 VIA PIETRO NENNI, 36
 46019 CICOGNARA - MANTOVA (ITALY)
 T.: 0375/88181/790016 F.: 0375/88831
 www.bulova-pennelli.com

BAIXENS PORTUGAL / ARGATINTAS
 AVENIDA PORTAS DO MINHO, Nº 711
 4760 - 706 RIBEIRÃO,
 V.N. FAMALICÃO
 T.: 252 910 030
 www.argatintas.pt

BX-215

ColoryPaint

YELLOW LABEL

High cover matt finish acrylic paint



SUBSTRATES

Cement, brick, plaster, paint, plaster-board boards, parameters with nooks/plastering and masonry in general.

Substrates must be sound, dry, cohesive, absorbent, well adhered, clean and free of dust.

PROPERTIES

- Matt finish
- Extra white colour
- Does not turn yellow
- Easy to apply
- Breathable
- Maximum coverage
- Does not splash
- Good performance
- No splices
- Washable

IDEAL FOR

- Painting walls, ceilings, façades and gypsum substrates

HOW TO USE

PREPARING THE SUBSTRATE

The substrate should be healthy, clean, strong, well adhered, consistent and be free of any trace of saltpetre, fungus, micro-organisms, grease, defocussing oils and in general any type of material that could hinder the adhesion of the product to the base.

INFORMATION ON DIRECTIVE 2004/42/CE

A1 CATEGORY. MATT PRODUCTS FOR WALLS AND CEILINGS
(BRIGHTNESS <25 to 60°) WATER-BASED

Limit: 75 g/l COV (2007); 30 g/l COV (2010)
This product contains 17,96 g/l COV max.



BX-215**ColoryPaint****YELLOW LABEL**

HOW TO USE

APPLICATION CONDITIONS

Shake the product until complete equalization.

Can be applied using brush, roller or airless spray.

Protect the areas that are not to be painted (skirting, switches, door/window frames) with painting tape and/or paper.

Remove once finished and before the paint has dried in order to avoid stripping the paint.

- New masonry substrates:

The first coat can be diluted with a maximum of 5 - 10% always use clean drinking water. The second coat can be applied diluted with a maximum of 5 %.

- Old masonry substrates:

In the case of dead old gypsum or dusty bases substrates, the dust has to be cleaned off the surface and the use of **RX-501 SOLVENT-BASED FIJAPREN** as a primer and hardener, or the use of **RX-500 WATER-BASED FIJAPREN**. Once finished continue as if it was a new masonry substrate.

- Painted substrates:

Check that the paint is clean and well adhered. If on the contrary, paint should be removed by sanding or by any other convenient method (depending on the base), set the substrate using **RX-501 or RX-500** and proceed as if it was a new masonry substrate.

- Substrates with disorders:

When surface shows traces of fungus, algae or other types of micro-organisms, firstly proceed with our healing treatment **RX-524 CLEAN MICRO**. This is to be applied on the surface to be treated, and after 25 - 30 minutes performance, proceed in cleansing the substrate with the aid of a water pressure machine or a hard bristle brush.

Once completely dried, proceed in reapplying **RX-524 CLEAN MICRO** until it is completely impregnated. This treatment is called preventive, it is very effective and helps to prevent the future appearance of micro-organisms.

In the case of saltpetre stains, proceed in applying our **RX-523 CLEAN SAL**. When the product is dry, scrape the surface with the aid of a hard bristle brush. After the mechanical cleansing of the surface, rinse with clean water in order to neutralize any remaining **CLEAN SAL** residue that could still be on the substrate.

The presence of oils or grease, especially on metal sheets should be completely removed in order to allow a correct adhesion of the product on the substrate. We recommend the use of **RX-527 CLEAN OIL** for the correct and total removal of these substances

BX-215**ColoryPaint****YELLOW LABEL****TECHNICAL FEATURES**

Quality	Acrylic
Solid contents	56 – 61 % in weight
Resistance to wet scrubbing (UNE EN ISO 11998)	Class 2
Density	1,52 ± 0,07 g/ml
Brookfield viscosity	11000 - 19000 cP. (A/4/10)
PH	8.0 - 10.0
Conservation	12 months
Cleaning of tools	Use water
Speculated shine (UNE-EN ISO 2813)	Deep matt

INFORMATION ON DIRECTIVE 2004/42/CE CATEGORY a1

COV LIMIT	COV CONTENT
75 g/l (2007) – 30 g/l (2010)	17,96 g/l maximum

DRYING TIME (*)

TO THE TOUCH	REPAINTED	TOTAL
60'	6 hrs	15 days

(*) Drying time is influenced by the room temperature, relative humidity of the air and the absorption of the substrate.

THEORETICAL PERFORMANCE (**)

m ² applied per litre	11 - 16
----------------------------------	---------

(*) The practical performance depends on the substrate (type, state and absorption) the application method and the grade of dilution.

INFORMATION OF INTEREST

The manufacturing process of the paints is controlled in batches, which allows traceability in the case of any incident. The quality control system used includes, the individual design and development of each product, both with the raw materials used confirming manufacturing uniformity, as well as the final product obtained. The use in our facilities of eco-technology in the manufacturing process allows the completion of environmentally friendly efficient work.

- Non-flammable product.
- Avoid contact with eyes and skin.
- Smoking, eating or drinking in the area of use is prohibited.
- Comply with Health and Safety at Work Executive regulations.
- Store the product in a dry place, in its original packaging firmly closed and free from humidity.
- Store the containers between 5°C and 35°C.
- Recommended storage time: 12 months as from date of manufacture in its original packaging and kept free from humidity.

For further information on protective measures and first aid, consult the product Safety Data Sheet.

BX-215

ColoryPaint

YELLOW LABEL

OBSERVATIONS

- The reading of this product's data sheet is indispensable for the correct use and application.
- The principles given in this data sheet have been obtained under normal laboratory conditions and on normal surfaces, results may vary, depending on the conditions of construction, (absorption of the surface, thickness applied, mixing water, temperature and humidity). The intervals exhibited have been obtained by means of historical measures. Slight high or low deviations to ranges presented in this technical data sheet will be admitted according to internal technical criteria and do not cause decrease in quality or will it affect the final performance of the product, being due, amongst other factors, to variations in the conditions of measure or uncertainty associated with the instruments used.
- Work conditions of the user are out of our control.
- The product should not be utilized for other uses except the ones indicated. It is advisable to follow strictly the recommendations of use given.
- A previous inspection of the state of the surface before use is fundamental.
- Do not apply on substrates with temperatures a lower than 5°C or excessively hot.
- Do not mix with any other material, it would lose its technical features.
- Painting on rainy days or maximum heat of the day is not recommended.
- Ideal temperature for applying from 5°C to 35°C.
- Maximum relative humidity: 85%.
- **ESTABLECIMIENTOS BAIXENS'** technical department informs that the new designs in the development of recent launches are considered in their experimental phase until an annual revision is made. From this point on, the product of a recent launch is considered as being totally consolidated in the market. In the meantime, **BAIXENS** reserves its right to adapt the variable specifications or ranges of work, according to technical criteria. The information subject to modification, will be identified with an asterisk at the top for easy recognition of those products which are the subject of new creation or are subject to an experimental phase or improvement in our different ranges because of market demand and or needs.
- We have a technical-sales team at your disposal for technical advice or consultation.

PACKAGING

FORMAT	13 l.	4 l.
UNITS/CASE	-	-
PALLETS	33 BUCKETS	120 BUCKETS



IPC	BX215NF2454A20
-----	----------------



BAIXENS
baixens.com

Testing the difference

BAIXENS ESPAÑA / PORTUGAL
POL. IND. MONCARRA, S/N
46230 ALGINET (VALENCIA)
T.: 961.750.834
F.: 961.752.471

BAIXENS FRANCE
14, RUE DU PONT NEUF
75001 PARIS (FRANCE)
T.: 0.800.90.14.37
F.: 0.800.90.20.52

BAIXENS ITALIA / BULOVA
VIA PIETRO NENNI, 36
46019 CICOGNARA - MANTOVA (ITALY)
T.: 0375/88181/790016 F.: 0375/88831
www.bulova-pennelli.com

BAIXENS PORTUGAL / ARGATINTAS
AVENIDA PORTAS DO MINHO, Nº 711
4760 - 706 RIBEIRÃO,
V.N. FAMALICÃO
T.: 252 910 030
www.argatintas.pt

BX-225

ColoryPaint

BLUE LABEL

Matt finish acrylic paint with maximum covering special for dry walls



SUBSTRATES

Cement, brick, plaster, paint, dry walls, parameters with nooks/plastering and masonry in general.

Substrates must be sound, dry, cohesive, absorbent, well adhered, clean and free of dust.

PROPERTIES

- Matt finish
- Good workability
- Breathable
- Maximum coverage
- Does not splash
- Does not yellow
- Low odour
- Washable
- Easy to repaint
- Quick dry
- Good performance
- Special for laminated plaster boards - dry walls
- Contains anti-corrosive additives

IDEAL FOR

- Painting walls, ceilings, façades and gypsum substrates

HOW TO USE

PREPARING THE SUBSTRATE

The substrate should be healthy, clean, strong, well adhered, consistent and be free of any trace of saltpetre, fungus, micro-organisms, grease, defocussing oils and in general any type of material that could hinder the adhesion of the product to the base.

INFORMATION ON DIRECTIVE 2004/42/CE

A1 CATEGORY. MATT PRODUCTS FOR WALLS AND CEILINGS
(BRIGHTNESS <25 to 60°) WATER-BASED

Limit: 75 g/l COV (2007); 30 g/l COV (2010)
This product contains 17,52 g/l COV max.



BX-225**ColoryPaint****BLUE LABEL**

HOW TO USE

APPLICATION CONDITIONS

Shake the product until complete equalization.

Can be applied using brush, roller or airless spray.

Protect the areas that are not to be painted (skirting, switches, door/window frames) with painting tape and/or paper.

Remove once finished and before the paint has dried in order to avoid stripping the paint.

- New masonry substrates:

The first coat can be diluted with a maximum of 5 - 10% always use clean drinking water. The second coat can be applied diluted with a maximum of 5 %.

- Old masonry substrates:

In the case of dead old gypsum or dusty bases substrates, the dust has to be cleaned off the surface and the use of **RX-501 SOLVENT-BASED FIJAPREN** as a primer and hardener, or the use of **RX-500 WATER-BASED FIJAPREN**. Once finished continue as if it was a new masonry substrate.

- Painted substrates:

Check that the paint is clean and well adhered. If on the contrary, paint should be removed by sanding or by any other convenient method (depending on the base), set the substrate using **RX-501 or RX-500** and proceed as if it was a new masonry substrate.

- Substrates with disorders:

When surface shows traces of fungus, algae or other types of micro-organisms, firstly proceed with our healing treatment **RX-524 CLEAN MICRO**. This is to be applied on the surface to be treated, and after 25 - 30 minutes performance, proceed in cleansing the substrate with the aid of a water pressure machine or a hard bristle brush.

Once completely dried, proceed in reapplying **RX-524 CLEAN MICRO** until it is completely impregnated. This treatment is called preventive, it is very effective and helps to prevent the future appearance of micro-organisms.

In the case of saltpetre stains, proceed in applying our **RX-523 CLEAN SAL**. When the product is dry, scrape the surface with the aid of a hard bristle brush. After the mechanical cleansing of the surface, rinse with clean water in order to neutralize any remaining **CLEAN SAL** residue that could still be on the substrate.

The presence of oils or grease, especially on metal sheets should be completely removed in order to allow a correct adhesion of the product on the substrate. We recommend the use of **RX-527 CLEAN OIL** for the correct and total removal of these substances

BX-225**ColoryPaint****BLUE LABEL****TECHNICAL FEATURES**

Quality	Acrylic
Solid contents	58 – 63 % in weight
Resistance to wet scrubbing (UNE EN ISO 11998)	Class 3
Density	1,59 ± 0,07 g/ml
Brookfield viscosity	10000 -18000 cP. (A/5/10)
PH	8.0 - 10.0
Conservation	12 months
Cleaning of tools	Use water
Speculated shine (UNE-EN ISO 2813)	Deep matt

INFORMATION ON DIRECTIVE 2004/42/CE CATEGORY a1

COV LIMIT	COV CONTENT
75 g/l (2007) – 30 g/l (2010)	17,52 g/l maximum

DRYING TIME (*)

TO THE TOUCH	REPAINTED	TOTAL
30' - 60'	5 - 7 hrs	15 days

(*) Drying time is influenced by the room temperature, relative humidity of the air and the absorption of the substrate.

THEORETICAL PERFORMANCE (**)

m ² applied per litre	8 - 12
----------------------------------	--------

(*) The practical performance depends on the substrate (type, state and absorption) the application method and the grade of dilution.

INFORMATION OF INTEREST

The manufacturing process of the paints is controlled in batches, which allows traceability in the case of any incident. The quality control system used includes, the individual design and development of each product, both with the raw materials used confirming manufacturing uniformity, as well as the final product obtained. The use in our facilities of eco-technology in the manufacturing process allows the completion of environmentally friendly efficient work.

- Non-flammable product.
- Avoid contact with eyes and skin.
- Smoking, eating or drinking in the area of use is prohibited.
- Comply with Health and Safety at Work Executive regulations.
- Store the product in a dry place, in its original packaging firmly closed and free from humidity.
- Store the containers between 5°C and 35°C.
- Recommended storage time: 12 months as from date of manufacture in its original packaging and kept free from humidity.

For further information on protective measures and first aid, consult the product Safety Data Sheet.

BX-225**ColoryPaint****BLUE LABEL****OBSERVATIONS**

- The reading of this product's data sheet is indispensable for the correct use and application.
- The principles given in this data sheet have been obtained under normal laboratory conditions and on normal surfaces, results may vary, depending on the conditions of construction, (absorption of the surface, thickness applied, mixing water, temperature and humidity). The intervals exhibited have been obtained by means of historical measures. Slight high or low deviations to ranges presented in this technical data sheet will be admitted according to internal technical criteria and do not cause decrease in quality or will it affect the final performance of the product, being due, amongst other factors, to variations in the conditions of measure or uncertainty associated with the instruments used.
- Work conditions of the user are out of our control.
- The product should not be utilized for other uses except the ones indicated. It is advisable to follow strictly the recommendations of use given.
- A previous inspection of the state of the surface before use is fundamental.
- Do not apply on substrates with temperatures a lower than 5°C or excessively hot.
- Do not mix with any other material, it would lose its technical features.
- Painting on rainy days or maximum heat of the day is not recommended.
- Ideal temperature for applying from 5°C to 35°C.
- Maximum relative humidity: 85%.
- **ESTABLECIMIENTOS BAIXENS'** technical department informs that the new designs in the development of recent launches are considered in their experimental phase until an annual revision is made. From this point on, the product of a recent launch is considered as being totally consolidated in the market. In the meantime, **BAIXENS** reserves its right to adapt the variable specifications or ranges of work, according to technical criteria. The information subject to modification, will be identified with an asterisk at the top for easy recognition of those products which are the subject of new creation or are subject to an experimental phase or improvement in our different ranges because of market demand and or needs.
- We have a technical-sales team at your disposal for technical advice or consultation.

PACKAGING

FORMAT	13 l.	4 l.
UNITS/CASE	-	-
PALLETS	33 BUCKETS	120 BUCKETS



IPC BX225NF2617A20


BAIXENS
 baixens.com

Testing the difference

BAIXENS ESPAÑA / PORTUGAL
 POL. IND. MONCARRA, S/N
 46230 ALGINET (VALENCIA)
 T.: 961.750.834
 F.: 961.752.471

BAIXENS FRANCE
 14, RUE DU PONT NEUF
 75001 PARIS (FRANCE)
 T.: 0.800.90.14.37
 F.: 0.800.90.20.52

BAIXENS ITALIA / BULOVA
 VIA PIETRO NENNI, 36
 46019 CICOGNARA - MANTOVA (ITALY)
 T.: 0375/88181/790016 F.: 0375/88831
 www.bulova-pennelli.com

BAIXENS PORTUGAL / ARGATINTAS
 AVENIDA PORTAS DO MINHO, Nº 711
 4760 - 706 RIBEIRÃO,
 V.N. FAMALICÃO
 T.: 252 910 030
 www.argatintas.pt

BX-240

ColoryPaint

GOLD LABEL

Excellent covering and workability acrylic paint



SUBSTRATES

Cement, brick, plaster, paint, plaster-board boards, parameters with nooks/ plastering and masonry in general.

Substrates must be sound, dry, cohesive, absorbent, well adhered, clean and free of dust.

PROPERTIES

- | | |
|----------------------|-----------------------|
| • Matt finish | • High coverage |
| • White colour | • Does not splash |
| • Does not yellow | • Excellent cleansing |
| • Easy to apply | • No splices |
| • Breathable | • Good performance |
| • Excellent adhesion | |

INFORMATION ON DIRECTIVE 2004/42/CE

A1 CATEGORY. MATT PRODUCTS FOR WALLS AND CEILINGS
(BRIGHTNESS <25 to 60°) WATER-BASED

Limit: 75 g/l COV (2007); 30 g/l COV (2010)
This product contains 17,52 g/l COV max.



IDEAL FOR

- Painting walls, ceilings, façades and gypsum substrates

HOW TO USE

PREPARING THE SUBSTRATE

The substrate should be healthy, clean, strong, well adhered, consistent and be free of any trace of saltpetre, fungus, micro-organisms, grease, defocussing oils and in general any type of material that could hinder the adhesion of the product to the base.

BX-240**ColoryPaint****GOLD LABEL**

HOW TO USE

APPLICATION CONDITIONS

Shake the product until complete equalization.

Can be applied using brush, roller or airless spray.

Protect the areas that are not to be painted (skirting, switches, door/window frames) with painting tape and/or paper.

Remove once finished and before the paint has dried in order to avoid stripping the paint.

- New masonry substrates:

The first coat can be diluted with a maximum of 5 - 10% always use clean drinking water. The second coat can be applied diluted with a maximum of 5 %.

- Old masonry substrates:

In the case of dead old gypsum or dusty bases substrates, the dust has to be cleaned off the surface and the use of **RX-501 SOLVENT-BASED FIJAPREN** as a primer and hardener, or the use of **RX-500 WATER-BASED FIJAPREN**. Once finished continue as if it was a new masonry substrate.

- Painted substrates:

Check that the paint is clean and well adhered. If on the contrary, paint should be removed by sanding or by any other convenient method (depending on the base), set the substrate using **RX-501 or RX-500** and proceed as if it was a new masonry substrate.

- Substrates with disorders:

When surface shows traces of fungus, algae or other types of micro-organisms, firstly proceed with our healing treatment **RX-524 CLEAN MICRO**. This is to be applied on the surface to be treated, and after 25 - 30 minutes performance, proceed in cleansing the substrate with the aid of a water pressure machine or a hard bristle brush.

Once completely dried, proceed in reapplying **RX-524 CLEAN MICRO** until it is completely impregnated. This treatment is called preventive, it is very effective and helps to prevent the future appearance of micro-organisms.

In the case of saltpetre stains, proceed in applying our **RX-523 CLEAN SAL**. When the product is dry, scrape the surface with the aid of a hard bristle brush. After the mechanical cleansing of the surface, rinse with clean water in order to neutralize any remaining **CLEAN SAL** residue that could still be on the substrate.

The presence of oils or grease, especially on metal sheets should be completely removed in order to allow a correct adhesion of the product on the substrate. We recommend the use of **RX-527 CLEAN OIL** for the correct and total removal of these substances

BX-240**ColoryPaint****GOLD LABEL****TECHNICAL FEATURES**

Quality	Acrylic
Solid contents	58 – 63 % in weight
Resistance to wet scrubbing (UNE EN ISO 11998)	Class 3
Density	1,59 ± 0,07 g/ml
Brookfield viscosity	10000 -18000 cP. (A/5/10)
PH	8.0 - 10.0
Conservation	12 months
Cleaning of tools	Use water
Speculated shine (UNE-EN ISO 2813)	Deep matt

INFORMATION ON DIRECTIVE 2004/42/CE CATEGORY a1

COV LIMIT	COV CONTENT
75 g/l (2007) – 30 g/l (2010)	17,52 g/l maximum

DRYING TIME (*)

TO THE TOUCH	REPAINTED	TOTAL
30' - 60'	5 - 7 hrs	15 days

(*) Drying time is influenced by the room temperature, relative humidity of the air and the absorption of the substrate.

THEORETICAL PERFORMANCE (**)

m ² applied per litre	8 - 12
----------------------------------	--------

(*) The practical performance depends on the substrate (type, state and absorption) the application method and the grade of dilution.

INFORMATION OF INTEREST

The manufacturing process of the paints is controlled in batches, which allows traceability in the case of any incident. The quality control system used includes, the individual design and development of each product, both with the raw materials used confirming manufacturing uniformity, as well as the final product obtained. The use in our facilities of eco-technology in the manufacturing process allows the completion of environmentally friendly efficient work.

- Non-flammable product.
- Avoid contact with eyes and skin.
- Smoking, eating or drinking in the area of use is prohibited.
- Comply with Health and Safety at Work Executive regulations.
- Store the product in a dry place, in its original packaging firmly closed and free from humidity.
- Store the containers between 5°C and 35°C.
- Recommended storage time: 12 months as from date of manufacture in its original packaging and kept free from humidity.

For further information on protective measures and first aid, consult the product Safety Data Sheet.

BX-240**ColoryPaint****GOLD LABEL****OBSERVATIONS**

- The reading of this product's data sheet is indispensable for the correct use and application.
- The principles given in this data sheet have been obtained under normal laboratory conditions and on normal surfaces, results may vary, depending on the conditions of construction, (absorption of the surface, thickness applied, mixing water, temperature and humidity). The intervals exhibited have been obtained by means of historical measures. Slight high or low deviations to ranges presented in this technical data sheet will be admitted according to internal technical criteria and do not cause decrease in quality or will it affect the final performance of the product, being due, amongst other factors, to variations in the conditions of measure or uncertainty associated with the instruments used.
- Work conditions of the user are out of our control.
- The product should not be utilized for other uses except the ones indicated. It is advisable to follow strictly the recommendations of use given.
- A previous inspection of the state of the surface before use is fundamental.
- Do not apply on substrates with temperatures a lower than 5°C or excessively hot.
- Do not mix with any other material, it would lose its technical features.
- Painting on rainy days or maximum heat of the day is not recommended.
- Ideal temperature for applying from 5°C to 35°C.
- Maximum relative humidity: 85%.
- **ESTABLECIMIENTOS BAIXENS'** technical department informs that the new designs in the development of recent launches are considered in their experimental phase until an annual revision is made. From this point on, the product of a recent launch is considered as being totally consolidated in the market. In the meantime, **BAIXENS** reserves its right to adapt the variable specifications or ranges of work, according to technical criteria. The information subject to modification, will be identified with an asterisk at the top for easy recognition of those products which are the subject of new creation or are subject to an experimental phase or improvement in our different ranges because of market demand and or needs.
- We have a technical-sales team at your disposal for technical advice or consultation.

PACKAGING

FORMAT	13 l.	4 l.
UNITS/CASE	-	-
PALLETS	33 BUCKETS	120 BUCKETS



IPC BX240NF2695A20


BAIXENS
 baixens.com

Testing the difference

BAIXENS ESPAÑA / PORTUGAL
 POL. IND. MONCARRA, S/N
 46230 ALGINET (VALENCIA)
 T.: 961.750.834
 F.: 961.752.471

BAIXENS FRANCE
 14, RUE DU PONT NEUF
 75001 PARIS (FRANCE)
 T.: 0.800.90.14.37
 F.: 0.800.90.20.52

BAIXENS ITALIA / BULOVA
 VIA PIETRO NENNI, 36
 46019 CICOGNARA - MANTOVA (ITALY)
 T.: 0375/88181/790016 F.: 0375/88831
 www.bulova-pennelli.com

BAIXENS PORTUGAL / ARGATINTAS
 AVENIDA PORTAS DO MINHO, Nº 711
 4760 - 706 RIBEIRÃO,
 V.N. FAMALICÃO
 T.: 252 910 030
 www.argatintas.pt

BX-250**ColoryPaint****PLATINUM LABEL**

High quality matt finish acrylic paint



SUBSTRATES

Cement, brick, plaster, paint, plaster-board boards, parameters with nooks/ plastering and masonry in general.

Substrates must be sound, dry, cohesive, absorbent, well adhered, clean and free of dust.

PROPERTIES

- Matt finish
- White colour
- Does not turn yellow
- Weatherproof
- Easy to apply
- Breathable
- Very washable
- Alkali resistant
- Excellent coverage
- Does not splash
- No splices
- Good performance

IDEAL FOR

- Painting walls, ceilings, façades and gypsum substrates

HOW TO USE

PREPARING THE SUBSTRATE

The substrate should be healthy, clean, strong, well adhered, consistent and be free of any trace of saltpetre, fungus, micro-organisms, grease, defocussing oils and in general any type of material that could hinder the adhesion of the product to the base.

INFORMATION ON DIRECTIVE 2004/42/CE

A1 CATEGORY. MATT PRODUCTS FOR WALLS AND CEILINGS
(BRIGHTNESS <25 to 60°) WATER-BASED

Limit: 75 g/l COV (2007); 30 g/l COV (2010)
This product contains 27,53 g/l COV max.



BX-250**ColoryPaint****PLATINUM LABEL**

HOW TO USE

APPLICATION CONDITIONS

Shake the product until complete equalization.

Can be applied using brush, roller or airless spray.

Protect the areas that are not to be painted (skirting, switches, door/window frames) with painting tape and/or paper.

Remove once finished and before the paint has dried in order to avoid stripping the paint.

- New masonry substrates:

The first coat can be diluted with a maximum of 5 - 10% always use clean drinking water. The second coat can be applied diluted with a maximum of 5 %.

- Old masonry substrates:

In the case of dead old gypsum or dusty bases substrates, the dust has to be cleaned off the surface and the use of **RX-501 SOLVENT-BASED FIJAPREN** as a primer and hardener, or the use of **RX-500 WATER-BASED FIJAPREN**. Once finished continue as if it was a new masonry substrate.

- Painted substrates:

Check that the paint is clean and well adhered. If on the contrary, paint should be removed by sanding or by any other convenient method (depending on the base), set the substrate using **RX-501 or RX-500** and proceed as if it was a new masonry substrate.

- Substrates with disorders:

When surface shows traces of fungus, algae or other types of micro-organisms, firstly proceed with our healing treatment **RX-524 CLEAN MICRO**. This is to be applied on the surface to be treated, and after 25 - 30 minutes performance, proceed in cleansing the substrate with the aid of a water pressure machine or a hard bristle brush.

Once completely dried, proceed in reapplying **RX-524 CLEAN MICRO** until it is completely impregnated. This treatment is called preventive, it is very effective and helps to prevent the future appearance of micro-organisms.

In the case of saltpetre stains, proceed in applying our **RX-523 CLEAN SAL**. When the product is dry, scrape the surface with the aid of a hard bristle brush. After the mechanical cleansing of the surface, rinse with clean water in order to neutralize any remaining **CLEAN SAL** residue that could still be on the substrate.

The presence of oils or grease, especially on metal sheets should be completely removed in order to allow a correct adhesion of the product on the substrate. We recommend the use of **RX-527 CLEAN OIL** for the correct and total removal of these substances

BX-250**ColoryPaint****PLATINUM LABEL****TECHNICAL FEATURES**

Quality	Acrylic
Solid contents	64 – 69 % in weight
Resistance to wet scrubbing (UNE EN ISO 11998)	Class 2
Density	1,66 ± 0,07 g/ml
Brookfield viscosity	25000 -35000 cP. (A/5/10)
PH	8.0 - 10.0
Conservation	12 months
Cleaning of tools	Use water
Speculated shine (UNE-EN ISO 2813)	Deep matt

INFORMATION ON DIRECTIVE 2004/42/CE CATEGORY a1

COV LIMIT	COV CONTENT
75 g/l (2007) – 30 g/l (2010)	27,53 g/l maximum

DRYING TIME (*)

TO THE TOUCH	REPAINTED	TOTAL
30' - 60'	5 - 7 hrs	15 days

(*) Drying time is influenced by the room temperature, relative humidity of the air and the absorption of the substrate.

THEORETICAL PERFORMANCE (**)

m ² applied per litre	11 - 16
----------------------------------	---------

(*) The practical performance depends on the substrate (type, state and absorption) the application method and the grade of dilution.

INFORMATION OF INTEREST

The manufacturing process of the paints is controlled in batches, which allows traceability in the case of any incident. The quality control system used includes, the individual design and development of each product, both with the raw materials used confirming manufacturing uniformity, as well as the final product obtained. The use in our facilities of eco-technology in the manufacturing process allows the completion of environmentally friendly efficient work.

- Non-flammable product.
- Avoid contact with eyes and skin.
- Smoking, eating or drinking in the area of use is prohibited.
- Comply with Health and Safety at Work Executive regulations.
- Store the product in a dry place, in its original packaging firmly closed and free from humidity.
- Store the containers between 5°C and 35°C.
- Recommended storage time: 12 months as from date of manufacture in its original packaging and kept free from humidity.

For further information on protective measures and first aid, consult the product Safety Data Sheet.

BX-250**ColoryPaint****PLATINUM LABEL****OBSERVATIONS**

- The reading of this product's data sheet is indispensable for the correct use and application.
- The principles given in this data sheet have been obtained under normal laboratory conditions and on normal surfaces, results may vary, depending on the conditions of construction, (absorption of the surface, thickness applied, mixing water, temperature and humidity). The intervals exhibited have been obtained by means of historical measures. Slight high or low deviations to ranges presented in this technical data sheet will be admitted according to internal technical criteria and do not cause decrease in quality or will it affect the final performance of the product, being due, amongst other factors, to variations in the conditions of measure or uncertainty associated with the instruments used.
- Work conditions of the user are out of our control.
- The product should not be utilized for other uses except the ones indicated. It is advisable to follow strictly the recommendations of use given.
- A previous inspection of the state of the surface before use is fundamental.
- Do not apply on substrates with temperatures a lower than 5°C or excessively hot.
- Do not mix with any other material, it would lose its technical features.
- Painting on rainy days or maximum heat of the day is not recommended.
- Ideal temperature for applying from 5°C to 35°C.
- Maximum relative humidity: 85%.
- **ESTABLECIMIENTOS BAIXENS'** technical department informs that the new designs in the development of recent launches are considered in their experimental phase until an annual revision is made. From this point on, the product of a recent launch is considered as being totally consolidated in the market. In the meantime, **BAIXENS** reserves its right to adapt the variable specifications or ranges of work, according to technical criteria. The information subject to modification, will be identified with an asterisk at the top for easy recognition of those products which are the subject of new creation or are subject to an experimental phase or improvement in our different ranges because of market demand and or needs.
- We have a technical-sales team at your disposal for technical advice or consultation.

PACKAGING

FORMAT	13 l.	4 l.
UNITS/CASE	-	-
PALLETS	33 BUCKETS	120 BUCKETS



IPC BX250NF2662A20


BAIXENS
 baixens.com

Testing the difference

BAIXENS ESPAÑA / PORTUGAL
 POL. IND. MONCARRA, S/N
 46230 ALGINET (VALENCIA)
 T.: 961.750.834
 F.: 961.752.471

BAIXENS FRANCE
 14, RUE DU PONT NEUF
 75001 PARIS (FRANCE)
 T.: 0.800.90.14.37
 F.: 0.800.90.20.52

BAIXENS ITALIA / BULOVA
 VIA PIETRO NENNI, 36
 46019 CICOGNARA - MANTOVA (ITALY)
 T.: 0375/88181/790016 F.: 0375/88831
 www.bulova-pennelli.com

BAIXENS PORTUGAL / ARGATINTAS
 AVENIDA PORTAS DO MINHO, Nº 711
 4760 - 706 RIBEIRÃO,
 V.N. FAMALICÃO
 T.: 252 910 030
 www.argatintas.pt

BX-260

ColoryPaint

TITANIUM LABEL

Acryl siloxane paint for high quality finish



SUBSTRATES

Cement, brick, plaster, paint, plaster-board boards, parameters with nooks/ plastering and masonry in general.
Substrates must be sound, dry, cohesive, absorbent, well adhered, clean and free of dust.

PROPERTIES

- | | |
|-------------------------|---------------------|
| • Matt finish | • Low odour |
| • White colour | • Perfect finish |
| • Siloxane product | • Good performance |
| • Does not turn yellow | • Excelent coverage |
| • Easy to apply | • Does not splash |
| • Breathable | • Washable |
| • Great levelling power | • Pearl effect |
| • High decoration | |

IDEAL FOR

- Painting walls, ceilings, façades and gypsum substrates

HOW TO USE

PREPARING THE SUBSTRATE

The substrate should be healthy, clean, strong, well adhered, consistent and be free of any trace of saltpetre, fungus, micro-organisms, grease, defocussing oils and in general any type of material that could hinder the adhesion of the product to the base.

INFORMATION ON DIRECTIVE 2004/42/CE

A1 CATEGORY. MATT PRODUCTS FOR WALLS AND CEILINGS
(BRIGHTNESS <25 to 60°) WATER-BASED

Limit: 75 g/l COV (2007); 30 g/l COV (2010)
This product contains 18,16 g/l COV max.



BX-260**ColoryPaint****TITANIUM LABEL**

HOW TO USE

APPLICATION CONDITIONS

Shake the product until complete equalization.

Can be applied using brush, roller or airless spray.

Protect the areas that are not to be painted (skirting, switches, door/window frames) with painting tape and/or paper.

Remove once finished and before the paint has dried in order to avoid stripping the paint.

- New masonry substrates:

The first coat can be diluted with a maximum of 5 - 10% always use clean drinking water. The second coat can be applied diluted with a maximum of 5 %.

- Old masonry substrates:

In the case of dead old gypsum or dusty bases substrates, the dust has to be cleaned off the surface and the use of **RX-501 SOLVENT-BASED FIJAPREN** as a primer and hardener, or the use of **RX-500 WATER-BASED FIJAPREN**. Once finished continue as if it was a new masonry substrate.

- Painted substrates:

Check that the paint is clean and well adhered. If on the contrary, paint should be removed by sanding or by any other convenient method (depending on the base), set the substrate using **RX-501 or RX-500** and proceed as if it was a new masonry substrate.

- Substrates with disorders:

When surface shows traces of fungus, algae or other types of micro-organisms, firstly proceed with our healing treatment **RX-524 CLEAN MICRO**. This is to be applied on the surface to be treated, and after 25 - 30 minutes performance, proceed in cleansing the substrate with the aid of a water pressure machine or a hard bristle brush.

Once completely dried, proceed in reapplying **RX-524 CLEAN MICRO** until it is completely impregnated. This treatment is called preventive, it is very effective and helps to prevent the future appearance of micro-organisms.

In the case of saltpetre stains, proceed in applying our **RX-523 CLEAN SAL**. When the product is dry, scrape the surface with the aid of a hard bristle brush. After the mechanical cleansing of the surface, rinse with clean water in order to neutralize any remaining **CLEAN SAL** residue that could still be on the substrate.

The presence of oils or grease, especially on metal sheets should be completely removed in order to allow a correct adhesion of the product on the substrate. We recommend the use of **RX-527 CLEAN OIL** for the correct and total removal of these substances

BX-260**ColoryPaint****TITANIUM LABEL****TECHNICAL FEATURES**

Quality	Acrylic
Solid contents	67 – 72 % in weight
Resistance to wet scrubbing (UNE EN ISO 11998)	Class 1
Density	1,67 ± 0,07 g/ml
Brookfield viscosity	25000 -35000 cP. (A/5/10)
PH	8.0 - 10.0
Conservation	12 months
Cleaning of tools	Use water
Speculated shine (UNE-EN ISO 2813)	Deep matt

INFORMATION ON DIRECTIVE 2004/42/CE CATEGORY a1

COV LIMIT	COV CONTENT
75 g/l (2007) – 30 g/l (2010)	18,16 g/l maximum

DRYING TIME (*)

TO THE TOUCH	REPAINTED	TOTAL
30' - 60'	5 - 7 hrs	15 days

(*) Drying time is influenced by the room temperature, relative humidity of the air and the absorption of the substrate.

THEORETICAL PERFORMANCE (**)

m ² applied per litre	12 - 14
----------------------------------	---------

(*) The practical performance depends on the substrate (type, state and absorption) the application method and the grade of dilution.

INFORMATION OF INTEREST

The manufacturing process of the paints is controlled in batches, which allows traceability in the case of any incident. The quality control system used includes, the individual design and development of each product, both with the raw materials used confirming manufacturing uniformity, as well as the final product obtained. The use in our facilities of eco-technology in the manufacturing process allows the completion of environmentally friendly efficient work.

- Non-flammable product.
- Avoid contact with eyes and skin.
- Smoking, eating or drinking in the area of use is prohibited.
- Comply with Health and Safety at Work Executive regulations.
- Store the product in a dry place, in its original packaging firmly closed and free from humidity.
- Store the containers between 5°C and 35°C.
- Recommended storage time: 12 months as from date of manufacture in its original packaging and kept free from humidity.

For further information on protective measures and first aid, consult the product Safety Data Sheet.

BX-260**ColoryPaint****TITANIUM LABEL****OBSERVATIONS**

- The reading of this product's data sheet is indispensable for the correct use and application.
- The principles given in this data sheet have been obtained under normal laboratory conditions and on normal surfaces, results may vary, depending on the conditions of construction, (absorption of the surface, thickness applied, mixing water, temperature and humidity). The intervals exhibited have been obtained by means of historical measures. Slight high or low deviations to ranges presented in this technical data sheet will be admitted according to internal technical criteria and do not cause decrease in quality or will it affect the final performance of the product, being due, amongst other factors, to variations in the conditions of measure or uncertainty associated with the instruments used.
- Work conditions of the user are out of our control.
- The product should not be utilized for other uses except the ones indicated. It is advisable to follow strictly the recommendations of use given.
- A previous inspection of the state of the surface before use is fundamental.
- Do not apply on substrates with temperatures a lower than 5°C or excessively hot.
- Do not mix with any other material, it would lose its technical features.
- Painting on rainy days or maximum heat of the day is not recommended.
- Ideal temperature for applying from 5°C to 35°C.
- Maximum relative humidity: 85%.
- **ESTABLECIMIENTOS BAIXENS'** technical department informs that the new designs in the development of recent launches are considered in their experimental phase until an annual revision is made. From this point on, the product of a recent launch is considered as being totally consolidated in the market. In the meantime, **BAIXENS** reserves its right to adapt the variable specifications or ranges of work, according to technical criteria. The information subject to modification, will be identified with an asterisk at the top for easy recognition of those products which are the subject of new creation or are subject to an experimental phase or improvement in our different ranges because of market demand and or needs.
- We have a technical-sales team at your disposal for technical advice or consultation.

PACKAGING

FORMAT	13 l.	4 l.
UNITS/CASE	-	-
PALLETS	33 BUCKETS	120 BUCKETS



IPC	BX260NF2728A20
-----	----------------


BAIXENS
 baixens.com

Testing the difference

BAIXENS ESPAÑA / PORTUGAL
 POL. IND. MONCARRA, S/N
 46230 ALGINET (VALENCIA)
 T.: 961.750.834
 F.: 961.752.471

BAIXENS FRANCE
 14, RUE DU PONT NEUF
 75001 PARIS (FRANCE)
 T.: 0.800.90.14.37
 F.: 0.800.90.20.52

BAIXENS ITALIA / BULOVA
 VIA PIETRO NENNI, 36
 46019 CICOGNARA - MANTOVA (ITALY)
 T.: 0375/88181/790016 F.: 0375/88831
 www.bulova-pennelli.com

BAIXENS PORTUGAL / ARGATINTAS
 AVENIDA PORTAS DO MINHO, Nº 711
 4760 - 706 RIBEIRÃO,
 V.N. FAMALICÃO
 T.: 252 910 030
 www.argatintas.pt

BX-400A

ColoryPaint

PURPLE LABEL

Acrylic satin paint for interior and exterior use



SUBSTRATES

Cement, brick, plaster, paint, plaster-board boards, parameters with nooks/ plastering and masonry in general.
Substrates must be sound, dry, cohesive, absorbent, well adhered, clean and free of dust.

PROPERTIES

- | | |
|------------------------|--------------------|
| • Satin finish | • Good coverage |
| • White colour | • Excellent wash |
| • Does not turn yellow | • No splices |
| • Easy to apply | • Good performance |
| • Breathable | |
| • Does not splash | |

IDEAL FOR

- Painting walls, ceilings, façades and gypsum substrates

HOW TO USE

PREPARING THE SUBSTRATE

The substrate should be healthy, clean, strong, well adhered, consistent and be free of any trace of saltpetre, fungus, micro-organisms, grease, defocussing oils and in general any type of material that could hinder the adhesion of the product to the base.

INFORMATION ON DIRECTIVE 2004/42/CE

A1 CATEGORY. MATT PRODUCTS FOR WALLS AND CEILINGS
(BRIGHTNESS <25 to 60°) WATER-BASED

Limit: 75 g/l COV (2007); 30 g/l COV (2010)
This product contains 1,23 g/l COV max.



BX-400A**ColoryPaint****PURPLE LABEL**

HOW TO USE

APPLICATION CONDITIONS

Shake the product until complete equalization.

Can be applied using brush, roller or airless spray.

Protect the areas that are not to be painted (skirting, switches, door/window frames) with painting tape and/or paper.

Remove once finished and before the paint has dried in order to avoid stripping the paint.

- New masonry substrates:

The first coat can be diluted with a maximum of 5 - 10% always use clean drinking water. The second coat can be applied diluted with a maximum of 5 %.

- Old masonry substrates:

In the case of dead old gypsum or dusty bases substrates, the dust has to be cleaned off the surface and the use of **RX-501 SOLVENT-BASED FIJAPREN** as a primer and hardener, or the use of **RX-500 WATER-BASED FIJAPREN**. Once finished continue as if it was a new masonry substrate.

- Painted substrates:

Check that the paint is clean and well adhered. If on the contrary, paint should be removed by sanding or by any other convenient method (depending on the base), set the substrate using **RX-501 or RX-500** and proceed as if it was a new masonry substrate.

- Substrates with disorders:

When surface shows traces of fungus, algae or other types of micro-organisms, firstly proceed with our healing treatment **RX-524 CLEAN MICRO**. This is to be applied on the surface to be treated, and after 25 - 30 minutes performance, proceed in cleansing the substrate with the aid of a water pressure machine or a hard bristle brush.

Once completely dried, proceed in reapplying **RX-524 CLEAN MICRO** until it is completely impregnated. This treatment is called preventive, it is very effective and helps to prevent the future appearance of micro-organisms.

In the case of saltpetre stains, proceed in applying our **RX-523 CLEAN SAL**. When the product is dry, scrape the surface with the aid of a hard bristle brush. After the mechanical cleansing of the surface, rinse with clean water in order to neutralize any remaining **CLEAN SAL** residue that could still be on the substrate.

The presence of oils or grease, especially on metal sheets should be completely removed in order to allow a correct adhesion of the product on the substrate. We recommend the use of **RX-527 CLEAN OIL** for the correct and total removal of these substances

BX-400A**ColoryPaint****PURPLE LABEL****TECHNICAL FEATURES**

Quality	Acrylic
Solid contents	40 – 45 % in weight
Resistance to wet scrubbing (UNE EN ISO 11998)	Class 1
Density	1,25 ± 0,07 g/ml
Brookfield viscosity	18000 - 28000 cP. (A/5/10)
PH	8.0 - 10.0
Conservation	12 months
Cleaning of tools	Use water
Speculated shine (UNE-EN ISO 2813)	Deep matt

INFORMATION ON DIRECTIVE 2004/42/CE CATEGORY a1

COV LIMIT	COV CONTENT
75 g/l (2007) – 30 g/l (2010)	1,23 g/l maximum

DRYING TIME (*)

TO THE TOUCH	REPAINTED	TOTAL
30' - 60'	4 - 8 hrs	15 days

(*) Drying time is influenced by the room temperature, relative humidity of the air and the absorption of the substrate.

THEORETICAL PERFORMANCE (**)

m ² applied per litre	9 - 12
----------------------------------	--------

(*) The practical performance depends on the substrate (type, state and absorption) the application method and the grade of dilution.

INFORMATION OF INTEREST

The manufacturing process of the paints is controlled in batches, which allows traceability in the case of any incident. The quality control system used includes, the individual design and development of each product, both with the raw materials used confirming manufacturing uniformity, as well as the final product obtained. The use in our facilities of eco-technology in the manufacturing process allows the completion of environmentally friendly efficient work.

- Non-flammable product.
- Avoid contact with eyes and skin.
- Smoking, eating or drinking in the area of use is prohibited.
- Comply with Health and Safety at Work Executive regulations.
- Store the product in a dry place, in its original packaging firmly closed and free from humidity.
- Store the containers between 5°C and 35°C.
- Recommended storage time: 12 months as from date of manufacture in its original packaging and kept free from humidity.

For further information on protective measures and first aid, consult the product Safety Data Sheet.

BX-400A

ColoryPaint

PURPLE LABEL

OBSERVATIONS

- The reading of this product's data sheet is indispensable for the correct use and application.
- The principles given in this data sheet have been obtained under normal laboratory conditions and on normal surfaces, results may vary, depending on the conditions of construction, (absorption of the surface, thickness applied, mixing water, temperature and humidity). The intervals exhibited have been obtained by means of historical measures. Slight high or low deviations to ranges presented in this technical data sheet will be admitted according to internal technical criteria and do not cause decrease in quality or will it affect the final performance of the product, being due, amongst other factors, to variations in the conditions of measure or uncertainty associated with the instruments used.
- Work conditions of the user are out of our control.
- The product should not be utilized for other uses except the ones indicated. It is advisable to follow strictly the recommendations of use given.
- A previous inspection of the state of the surface before use is fundamental.
- Do not apply on substrates with temperatures a lower than 5°C or excessively hot.
- Do not mix with any other material, it would lose its technical features.
- Painting on rainy days or maximum heat of the day is not recommended.
- Ideal temperature for applying from 5°C to 35°C.
- Maximum relative humidity: 85%.
- **ESTABLECIMIENTOS BAIXENS'** technical department informs that the new designs in the development of recent launches are considered in their experimental phase until an annual revision is made. From this point on, the product of a recent launch is considered as being totally consolidated in the market. In the meantime, **BAIXENS** reserves its right to adapt the variable specifications or ranges of work, according to technical criteria. The information subject to modification, will be identified with an asterisk at the top for easy recognition of those products which are the subject of new creation or are subject to an experimental phase or improvement in our different ranges because of market demand and or needs.
- We have a technical-sales team at your disposal for technical advice or consultation.

PACKAGING

FORMAT	13 l.	4 l.
UNITS/CASE	-	-
PALLETS	33 BUCKETS	120 BUCKETS



IPC BX400ANF2730B17A20



BAIXENS
baixens.com

Testing the difference

BAIXENS ESPAÑA / PORTUGAL
POL. IND. MONCARRA, S/N
46230 ALGINET (VALENCIA)
T.: 961.750.834
F.: 961.752.471

BAIXENS FRANCE
14, RUE DU PONT NEUF
75001 PARIS (FRANCE)
T.: 0.800.90.14.37
F.: 0.800.90.20.52

BAIXENS ITALIA / BULOVA
VIA PIETRO NENNI, 36
46019 CICOGNARA - MANTOVA (ITALY)
T.: 0375/88181/790016 F.: 0375/88831
www.bulova-pennelli.com

BAIXENS PORTUGAL / ARGATINTAS
AVENIDA PORTAS DO MINHO, Nº 711
4760 - 706 RIBEIRÃO,
V.N. FAMALICÃO
T.: 252 910 030
www.argatintas.pt

BX-230

ColoryPaint

ORANGE LABEL

Matt finish vinylic paint with good coverage



SUBSTRATES

Cement, brick, plaster, paint, dry walls, parameters with nooks/plastering and masonry in general.

Substrates must be sound, dry, cohesive, absorbent, well adhered, clean and free of dust.

PROPERTIES

- | | |
|------------------------|--|
| • Matt finish | • Good coverage |
| • White colour | • No splices |
| • Does not turn yellow | • Low odour |
| • Easy to apply | • Good adhesion on any type of masonry substrate |
| • Breathable | • Good performance |
| • Perfect finish | • Perfect finish |
| • Does not splash | |
| • Washable | |

IDEAL FOR

- Painting walls, ceilings, façades and gypsum substrates

HOW TO USE

PREPARING THE SUBSTRATE

The substrate should be healthy, clean, strong, well adhered, consistent and be free of any trace of saltpetre, fungus, micro-organisms, grease, defocussing oils and in general any type of material that could hinder the adhesion of the product to the base.

INFORMATION ON DIRECTIVE 2004/42/CE

A1 CATEGORY. MATT PRODUCTS FOR WALLS AND CEILINGS
(BRIGHTNESS <25 to 60°) WATER-BASED

Limit: 75 g/l COV (2007); 30 g/l COV (2010)
This product contains 2,51 g/l COV max.



BX-230**ColoryPaint****ORANGE LABEL**

HOW TO USE

APPLICATION CONDITIONS

Shake the product until complete equalization.

Can be applied using brush, roller or airless spray.

Protect the areas that are not to be painted (skirting, switches, door/window frames) with painting tape and/or paper.

Remove once finished and before the paint has dried in order to avoid stripping the paint.

- New masonry substrates:

The first coat can be diluted with a maximum of 5 - 10% always use clean drinking water. The second coat can be applied diluted with a maximum of 5 %.

- Old masonry substrates:

In the case of dead old gypsum or dusty bases substrates, the dust has to be cleaned off the surface and the use of **RX-501 SOLVENT-BASED FIJAPREN** as a primer and hardener, or the use of **RX-500 WATER-BASED FIJAPREN**. Once finished continue as if it was a new masonry substrate.

- Painted substrates:

Check that the paint is clean and well adhered. If on the contrary, paint should be removed by sanding or by any other convenient method (depending on the base), set the substrate using **RX-501 or RX-500** and proceed as if it was a new masonry substrate.

- Substrates with disorders:

When surface shows traces of fungus, algae or other types of micro-organisms, firstly proceed with our healing treatment **RX-524 CLEAN MICRO**. This is to be applied on the surface to be treated, and after 25 - 30 minutes performance, proceed in cleansing the substrate with the aid of a water pressure machine or a hard bristle brush.

Once completely dried, proceed in reapplying **RX-524 CLEAN MICRO** until it is completely impregnated. This treatment is called preventive, it is very effective and helps to prevent the future appearance of micro-organisms.

In the case of saltpetre stains, proceed in applying our **RX-523 CLEAN SAL**. When the product is dry, scrape the surface with the aid of a hard bristle brush. After the mechanical cleansing of the surface, rinse with clean water in order to neutralize any remaining **CLEAN SAL** residue that could still be on the substrate.

The presence of oils or grease, especially on metal sheets should be completely removed in order to allow a correct adhesion of the product on the substrate. We recommend the use of **RX-527 CLEAN OIL** for the correct and total removal of these substances

BX-230**ColoryPaint****ORANGE LABEL****TECHNICAL FEATURES**

Quality	Vinyllic
Solid contents	60 – 65 % in weight
Resistance to wet scrubbing (UNE EN ISO 11998)	Class 3
Density	1,62 ± 0,07 g/ml
Brookfield viscosity	10000 -18000 cP. (A/5/10)
PH	8.0 - 10.0
Conservation	12 months
Cleaning of tools	Use water
Speculated shine (UNE-EN ISO 2813)	Deep matt

INFORMATION ON DIRECTIVE 2004/42/CE CATEGORY a1

COV LIMIT	COV CONTENT
75 g/l (2007) – 30 g/l (2010)	2,51 g/l maximum

DRYING TIME (*)

TO THE TOUCH	REPAINTED	TOTAL
45' - 90'	6 - 9 hrs	15 days

(*) Drying time is influenced by the room temperature, relative humidity of the air and the absorption of the substrate.

THEORETICAL PERFORMANCE (**)

m ² applied per litre	8 - 12
----------------------------------	--------

(*) The practical performance depends on the substrate (type, state and absorption) the application method and the grade of dilution.

INFORMATION OF INTEREST

The manufacturing process of the paints is controlled in batches, which allows traceability in the case of any incident. The quality control system used includes, the individual design and development of each product, both with the raw materials used confirming manufacturing uniformity, as well as the final product obtained. The use in our facilities of eco-technology in the manufacturing process allows the completion of environmentally friendly efficient work.

- Non-flammable product.
- Avoid contact with eyes and skin.
- Smoking, eating or drinking in the area of use is prohibited.
- Comply with Health and Safety at Work Executive regulations.
- Store the product in a dry place, in its original packaging firmly closed and free from humidity.
- Store the containers between 5°C and 35°C.
- Recommended storage time: 12 months as from date of manufacture in its original packaging and kept free from humidity.

For further information on protective measures and first aid, consult the product Safety Data Sheet.

BX-230

ColoryPaint

ORANGE LABEL

OBSERVATIONS

- The reading of this product's data sheet is indispensable for the correct use and application.
- The principles given in this data sheet have been obtained under normal laboratory conditions and on normal surfaces, results may vary, depending on the conditions of construction, (absorption of the surface, thickness applied, mixing water, temperature and humidity). The intervals exhibited have been obtained by means of historical measures. Slight high or low deviations to ranges presented in this technical data sheet will be admitted according to internal technical criteria and do not cause decrease in quality or will it affect the final performance of the product, being due, amongst other factors, to variations in the conditions of measure or uncertainty associated with the instruments used.
- Work conditions of the user are out of our control.
- The product should not be utilized for other uses except the ones indicated. It is advisable to follow strictly the recommendations of use given.
- A previous inspection of the state of the surface before use is fundamental.
- Do not apply on substrates with temperatures a lower than 5°C or excessively hot.
- Do not mix with any other material, it would lose its technical features.
- Painting on rainy days or maximum heat of the day is not recommended.
- Ideal temperature for applying from 5°C to 35°C.
- Maximum relative humidity: 85%.
- **ESTABLECIMIENTOS BAIXENS'** technical department informs that the new designs in the development of recent launches are considered in their experimental phase until an annual revision is made. From this point on, the product of a recent launch is considered as being totally consolidated in the market. In the meantime, **BAIXENS** reserves its right to adapt the variable specifications or ranges of work, according to technical criteria. The information subject to modification, will be identified with an asterix at the top for easy recognition of those products which are the subject of new creation or are subject to an experimental phase or improvement in our different ranges because of market demand and or needs.
- We have a technical-sales team at your disposal for technical advice or consultation.

PACKAGING

FORMAT	13 l.	4 l.
UNITS/CASE	-	-
PALLETS	33 BUCKETS	120 BUCKETS



IPC BX230NF2678A20


BAIXENS
 baixens.com

Testing the difference

BAIXENS ESPAÑA / PORTUGAL
 POL. IND. MONCARRA, S/N
 46230 ALGINET (VALENCIA)
 T.: 961.750.834
 F.: 961.752.471

BAIXENS FRANCE
 14, RUE DU PONT NEUF
 75001 PARIS (FRANCE)
 T.: 0.800.90.14.37
 F.: 0.800.90.20.52

BAIXENS ITALIA / BULOVA
 VIA PIETRO NENNI, 36
 46019 CICOGNARA - MANTOVA (ITALY)
 T.: 0375/88181/790016 F.: 0375/88831
 www.bulova-pennelli.com

BAIXENS PORTUGAL / ARGATINTAS
 AVENIDA PORTAS DO MINHO, Nº 711
 4760 - 706 RIBEIRÃO,
 V.N. FAMALICÃO
 T.: 252 910 030
 www.argatintas.pt

BX-235

ColoryPaint

FROZEN LABEL

Matt finish vinylic paint for interior and exterior use



SUBSTRATES

Cement, brick, plaster, paint, dry walls, parameters with nooks/plastering and masonry in general.

Substrates must be sound, dry, cohesive, absorbent, well adhered, clean and free of dust.

PROPERTIES

- Matt finish
- White colour
- Does not turn yellow
- Easy to apply
- Breathable
- Perfect finish
- Does not splash
- Washable
- No splices
- Low odour
- Good adhesion on any type of masonry substrate
- Good performance

IDEAL FOR

- Painting walls, ceilings, façades and gypsum substrates

HOW TO USE

PREPARING THE SUBSTRATE

The substrate should be healthy, clean, strong, well adhered, consistent and be free of any trace of saltpetre, fungus, micro-organisms, grease, defocussing oils and in general any type of material that could hinder the adhesion of the product to the base.

INFORMATION ON DIRECTIVE 2004/42/CE

A1 CATEGORY. MATT PRODUCTS FOR WALLS AND CEILINGS
(BRIGHTNESS <25 to 60°) WATER-BASED

Limit: 75 g/l COV (2007); 30 g/l COV (2010)
This product contains 2,62 g/l COV max.



BX-235**ColoryPaint****FROZEN LABEL**

HOW TO USE

APPLICATION CONDITIONS

Shake the product until complete equalization.

Can be applied using brush, roller or airless spray.

Protect the areas that are not to be painted (skirting, switches, door/window frames) with painting tape and/or paper.

Remove once finished and before the paint has dried in order to avoid stripping the paint.

- New masonry substrates:

The first coat can be diluted with a maximum of 5 - 10% always use clean drinking water. The second coat can be applied diluted with a maximum of 5 %.

- Old masonry substrates:

In the case of dead old gypsum or dusty bases substrates, the dust has to be cleaned off the surface and the use of **RX-501 SOLVENT-BASED FIJAPREN** as a primer and hardener, or the use of **RX-500 WATER-BASED FIJAPREN**. Once finished continue as if it was a new masonry substrate.

- Painted substrates:

Check that the paint is clean and well adhered. If on the contrary, paint should be removed by sanding or by any other convenient method (depending on the base), set the substrate using **RX-501 or RX-500** and proceed as if it was a new masonry substrate.

- Substrates with disorders:

When surface shows traces of fungus, algae or other types of micro-organisms, firstly proceed with our healing treatment **RX-524 CLEAN MICRO**. This is to be applied on the surface to be treated, and after 25 - 30 minutes performance, proceed in cleansing the substrate with the aid of a water pressure machine or a hard bristle brush.

Once completely dried, proceed in reapplying **RX-524 CLEAN MICRO** until it is completely impregnated. This treatment is called preventive, it is very effective and helps to prevent the future appearance of micro-organisms.

In the case of saltpetre stains, proceed in applying our **RX-523 CLEAN SAL**. When the product is dry, scrape the surface with the aid of a hard bristle brush. After the mechanical cleansing of the surface, rinse with clean water in order to neutralize any remaining **CLEAN SAL** residue that could still be on the substrate.

The presence of oils or grease, especially on metal sheets should be completely removed in order to allow a correct adhesion of the product on the substrate. We recommend the use of **RX-527 CLEAN OIL** for the correct and total removal of these substances

BX-235**ColoryPaint****FROZEN LABEL****TECHNICAL FEATURES**

Quality	Vinyllic
Solid contents	63 – 68 % in weight
Resistance to wet scrubbing (UNE EN ISO 11998)	Class 2
Density	1,65 ± 0,07 g/ml
Brookfield viscosity	20000 -30000 cP. (A/5/10)
PH	8.0 - 10.0
Conservation	12 months
Cleaning of tools	Use water
Speculated shine (UNE-EN ISO 2813)	Deep matt

INFORMATION ON DIRECTIVE 2004/42/CE CATEGORY a1

COV LIMIT	COV CONTENT
75 g/l (2007) – 30 g/l (2010)	2,62 g/l maximum

DRYING TIME (*)

TO THE TOUCH	REPAINTED	TOTAL
45' - 90'	6 - 9 hrs	15 days

(*) Drying time is influenced by the room temperature, relative humidity of the air and the absorption of the substrate.

THEORETICAL PERFORMANCE (**)

m ² applied per litre	10 - 15
----------------------------------	---------

(*) The practical performance depends on the substrate (type, state and absorption) the application method and the grade of dilution.

INFORMATION OF INTEREST

The manufacturing process of the paints is controlled in batches, which allows traceability in the case of any incident. The quality control system used includes, the individual design and development of each product, both with the raw materials used confirming manufacturing uniformity, as well as the final product obtained. The use in our facilities of eco-technology in the manufacturing process allows the completion of environmentally friendly efficient work.

- Non-flammable product.
- Avoid contact with eyes and skin.
- Smoking, eating or drinking in the area of use is prohibited.
- Comply with Health and Safety at Work Executive regulations.
- Store the product in a dry place, in its original packaging firmly closed and free from humidity.
- Store the containers between 5°C and 35°C.
- Recommended storage time: 12 months as from date of manufacture in its original packaging and kept free from humidity.

For further information on protective measures and first aid, consult the product Safety Data Sheet.

BX-235**ColoryPaint****FROZEN LABEL****OBSERVATIONS**

- The reading of this product's data sheet is indispensable for the correct use and application.
- The principles given in this data sheet have been obtained under normal laboratory conditions and on normal surfaces, results may vary, depending on the conditions of construction, (absorption of the surface, thickness applied, mixing water, temperature and humidity). The intervals exhibited have been obtained by means of historical measures. Slight high or low deviations to ranges presented in this technical data sheet will be admitted according to internal technical criteria and do not cause decrease in quality or will it affect the final performance of the product, being due, amongst other factors, to variations in the conditions of measure or uncertainty associated with the instruments used.
- Work conditions of the user are out of our control.
- The product should not be utilized for other uses except the ones indicated. It is advisable to follow strictly the recommendations of use given.
- A previous inspection of the state of the surface before use is fundamental.
- Do not apply on substrates with temperatures a lower than 5°C or excessively hot.
- Do not mix with any other material, it would lose its technical features.
- Painting on rainy days or maximum heat of the day is not recommended.
- Ideal temperature for applying from 5°C to 35°C.
- Maximum relative humidity: 85%.
- **ESTABLECIMIENTOS BAIXENS'** technical department informs that the new designs in the development of recent launches are considered in their experimental phase until an annual revision is made. From this point on, the product of a recent launch is considered as being totally consolidated in the market. In the meantime, **BAIXENS** reserves its right to adapt the variable specifications or ranges of work, according to technical criteria. The information subject to modification, will be identified with an asterisk at the top for easy recognition of those products which are the subject of new creation or are subject to an experimental phase or improvement in our different ranges because of market demand and or needs.
- We have a technical-sales team at your disposal for technical advice or consultation.

PACKAGING

FORMAT	13 l.	4 l.
UNITS/CASE	-	-
PALLETS	33 BUCKETS	120 BUCKETS



IPC BX235NF2632A20


BAIXENS
 baixens.com

Testing the difference

BAIXENS ESPAÑA / PORTUGAL
 POL. IND. MONCARRA, S/N
 46230 ALGINET (VALENCIA)
 T.: 961.750.834
 F.: 961.752.471

BAIXENS FRANCE
 14, RUE DU PONT NEUF
 75001 PARIS (FRANCE)
 T.: 0.800.90.14.37
 F.: 0.800.90.20.52

BAIXENS ITALIA / BULOVA
 VIA PIETRO NENNI, 36
 46019 CICOGNARA - MANTOVA (ITALY)
 T.: 0375/88181/790016 F.: 0375/88831
 www.bulova-pennelli.com

BAIXENS PORTUGAL / ARGATINTAS
 AVENIDA PORTAS DO MINHO, Nº 711
 4760 - 706 RIBEIRÃO,
 V.N. FAMALICÃO
 T.: 252 910 030
 www.argatintas.pt

BX-400V

ColoryPaint

PURPLE LABEL

Vinyllic satin paint for interior and exterior use



SUBSTRATES

Cement, brick, plaster, paint, plaster-board boards, parameters with nooks/ plastering and masonry in general.
Substrates must be sound, dry, cohesive, absorbent, well adhered, clean and free of dust.

PROPERTIES

- | | |
|------------------------|--------------------|
| • Satin finish | • Good coverage |
| • White colour | • Excellent wash |
| • Does not turn yellow | • No splices |
| • Easy to apply | • Good performance |
| • Breathable | |
| • Does not splash | |

IDEAL FOR

- Painting walls, ceilings, façades and gypsum substrates

HOW TO USE

PREPARING THE SUBSTRATE

The substrate should be healthy, clean, strong, well adhered, consistent and be free of any trace of saltpetre, fungus, micro-organisms, grease, defocussing oils and in general any type of material that could hinder the adhesion of the product to the base.

INFORMATION ON DIRECTIVE 2004/42/CE

A1 CATEGORY. MATT PRODUCTS FOR WALLS AND CEILINGS
(BRIGHTNESS <25 to 60°) WATER-BASED

Limit: 75 g/l COV (2007); 30 g/l COV (2010)
This product contains 1,79 g/l COV max.



BX-400V**ColoryPaint****PURPLE LABEL**

HOW TO USE

APPLICATION CONDITIONS

Shake the product until complete equalization.

Can be applied using brush, roller or airless spray.

Protect the areas that are not to be painted (skirting, switches, door/window frames) with painting tape and/or paper.

Remove once finished and before the paint has dried in order to avoid stripping the paint.

- New masonry substrates:

The first coat can be diluted with a maximum of 5 - 10% always use clean drinking water. The second coat can be applied diluted with a maximum of 5 %.

- Old masonry substrates:

In the case of dead old gypsum or dusty bases substrates, the dust has to be cleaned off the surface and the use of **RX-501 SOLVENT-BASED FIJAPREN** as a primer and hardener, or the use of **RX-500 WATER-BASED FIJAPREN**. Once finished continue as if it was a new masonry substrate.

- Painted substrates:

Check that the paint is clean and well adhered. If on the contrary, paint should be removed by sanding or by any other convenient method (depending on the base), set the substrate using **RX-501 or RX-500** and proceed as if it was a new masonry substrate.

- Substrates with disorders:

When surface shows traces of fungus, algae or other types of micro-organisms, firstly proceed with our healing treatment **RX-524 CLEAN MICRO**. This is to be applied on the surface to be treated, and after 25 - 30 minutes performance, proceed in cleansing the substrate with the aid of a water pressure machine or a hard bristle brush.

Once completely dried, proceed in reapplying **RX-524 CLEAN MICRO** until it is completely impregnated. This treatment is called preventive, it is very effective and helps to prevent the future appearance of micro-organisms.

In the case of saltpetre stains, proceed in applying our **RX-523 CLEAN SAL**. When the product is dry, scrape the surface with the aid of a hard bristle brush. After the mechanical cleansing of the surface, rinse with clean water in order to neutralize any remaining **CLEAN SAL** residue that could still be on the substrate.

The presence of oils or grease, especially on metal sheets should be completely removed in order to allow a correct adhesion of the product on the substrate. We recommend the use of **RX-527 CLEAN OIL** for the correct and total removal of these substances

BX-400V**ColoryPaint****PURPLE LABEL****TECHNICAL FEATURES**

Quality	Vinyllic
Solid contents	39 – 44 % in weight
Resistance to wet scrubbing (UNE EN ISO 11998)	Class 1
Density	1,27 ± 0,07 g/ml
Brookfield viscosity	14000 - 22000 cP. (A/5/10)
PH	7.0 - 9.0
Conservation	12 months
Cleaning of tools	Use water
Speculated shine (UNE-EN ISO 2813)	Deep matt

INFORMATION ON DIRECTIVE 2004/42/CE CATEGORY a1

COV LIMIT	COV CONTENT
75 g/l (2007) – 30 g/l (2010)	1,79 g/l maximum

DRYING TIME (*)

TO THE TOUCH	REPAINTED	TOTAL
30' - 60'	4 - 8 hrs	15 days

(*) Drying time is influenced by the room temperature, relative humidity of the air and the absorption of the substrate.

THEORETICAL PERFORMANCE (**)

m ² applied per litre	9 - 12
----------------------------------	--------

(*) The practical performance depends on the substrate (type, state and absorption) the application method and the grade of dilution.

INFORMATION OF INTEREST

The manufacturing process of the paints is controlled in batches, which allows traceability in the case of any incident. The quality control system used includes, the individual design and development of each product, both with the raw materials used confirming manufacturing uniformity, as well as the final product obtained. The use in our facilities of eco-technology in the manufacturing process allows the completion of environmentally friendly efficient work.

- Non-flammable product.
- Avoid contact with eyes and skin.
- Smoking, eating or drinking in the area of use is prohibited.
- Comply with Health and Safety at Work Executive regulations.
- Store the product in a dry place, in its original packaging firmly closed and free from humidity.
- Store the containers between 5°C and 35°C.
- Recommended storage time: 12 months as from date of manufacture in its original packaging and kept free from humidity.

For further information on protective measures and first aid, consult the product Safety Data Sheet.

BX-400V

ColoryPaint

PURPLE LABEL

OBSERVATIONS

- The reading of this product's data sheet is indispensable for the correct use and application.
- The principles given in this data sheet have been obtained under normal laboratory conditions and on normal surfaces, results may vary, depending on the conditions of construction, (absorption of the surface, thickness applied, mixing water, temperature and humidity). The intervals exhibited have been obtained by means of historical measures. Slight high or low deviations to ranges presented in this technical data sheet will be admitted according to internal technical criteria and do not cause decrease in quality or will it affect the final performance of the product, being due, amongst other factors, to variations in the conditions of measure or uncertainty associated with the instruments used.
- Work conditions of the user are out of our control.
- The product should not be utilized for other uses except the ones indicated. It is advisable to follow strictly the recommendations of use given.
- A previous inspection of the state of the surface before use is fundamental.
- Do not apply on substrates with temperatures a lower than 5°C or excessively hot.
- Do not mix with any other material, it would lose its technical features.
- Painting on rainy days or maximum heat of the day is not recommended.
- Ideal temperature for applying from 5°C to 35°C.
- Maximum relative humidity: 85%.
- **ESTABLECIMIENTOS BAIXENS'** technical department informs that the new designs in the development of recent launches are considered in their experimental phase until an annual revision is made. From this point on, the product of a recent launch is considered as being totally consolidated in the market. In the meantime, **BAIXENS** reserves its right to adapt the variable specifications or ranges of work, according to technical criteria. The information subject to modification, will be identified with an asterix at the top for easy recognition of those products which are the subject of new creation or are subject to an experimental phase or improvement in our different ranges because of market demand and or needs.
- We have a technical-sales team at your disposal for technical advice or consultation.

PACKAGING

FORMAT	13 l.	4 l.
UNITS/CASE	-	-
PALLETS	33 BUCKETS	120 BUCKETS



IPC BX400VNF2732B17A20



BAIXENS
baixens.com

Testing the difference

BAIXENS ESPAÑA / PORTUGAL
POL. IND. MONCARRA, S/N
46230 ALGINET (VALENCIA)
T.: 961.750.834
F.: 961.752.471

BAIXENS FRANCE
14, RUE DU PONT NEUF
75001 PARIS (FRANCE)
T.: 0.800.90.14.37
F.: 0.800.90.20.52

BAIXENS ITALIA / BULOVA
VIA PIETRO NENNI, 36
46019 CICOGNARA - MANTOVA (ITALY)
T.: 0375/88181/790016 F.: 0375/88831
www.bulova-pennelli.com

BAIXENS PORTUGAL / ARGATINTAS
AVENIDA PORTAS DO MINHO, Nº 711
4760 - 706 RIBEIRÃO,
V.N. FAMALICÃO
T.: 252 910 030
www.argatintas.pt

ANTI-MOLD PAINTS (CPA).





BX-100 CPA

ColoryPaint

GREEN LABEL

Acrylic matt paint for interior use – sheltered outdoors



INTERIOR



SUBSTRATES

Cement, brick, plaster, paint, plaster-board boards, parameters with nooks/ plastering and masonry in general.

Substrates must be sound, dry, cohesive, absorbent, well adhered, clean and free of dust.

PROPERTIES

- Matt finish
- White colour
- Does not yellow
- Easy to apply
- Good covering after drying
- Does not splash
- Good performance
- Contains ANTI-MOLD additives

IDEAL FOR

- Painting walls, ceilings and gypsum substrates

HOW TO USE

PREPARING THE SUBSTRATE

The substrate should be healthy, clean, strong, well adhered, consistent and be free of any trace of saltpetre, fungus, micro-organisms, grease, defocussing oils and in general any type of material that could hinder the adhesion of the product to the base.

INFORMATION ON DIRECTIVE 2004/42/CE

A1 CATEGORY. MATT PRODUCTS FOR WALLS AND CEILINGS
(BRIGHTNESS <25 to 60°) WATER-BASED

Limit: 75 g/l COV (2007); 30 g/l COV (2010)
This product contains 0,95 g/l COV max.



BX-100 CPA

ColoryPaint

GREEN LABEL

HOW TO USE

APPLICATION CONDITIONS

Shake the product until complete equalization.

Can be applied using brush, roller or airless spray.

Protect the areas that are not to be painted (skirting, switches, door/window frames) with painting tape and/or paper.

Remove once finished and before the paint has dried in order to avoid stripping the paint.

- New masonry substrates:

The first coat can be diluted with a maximum of 5 - 10% always use clean drinking water. The second coat can be applied diluted with a maximum of 5 %.

- Old masonry substrates:

In the case of dead old gypsum or dusty bases substrates, the dust has to be cleaned off the surface and the use of **RX-501 SOLVENT-BASED FIJAPREN** as a primer and hardener, or the use of **RX-500 WATER-BASED FIJAPREN**. Once finished continue as if it was a new masonry substrate.

- Painted substrates:

Check that the paint is clean and well adhered. If on the contrary, paint should be removed by sanding or by any other convenient method (depending on the base), set the substrate using **RX-501 or RX-500** and proceed as if it was a new masonry substrate.

- Substrates with disorders:

When surface shows traces of fungus, algae or other types of micro-organisms, firstly proceed with our healing treatment **RX-524 CLEAN MICRO**. This is to be applied on the surface to be treated, and after 25 - 30 minutes performance, proceed in cleansing the substrate with the aid of a water pressure machine or a hard bristle brush.

Once completely dried, proceed in reapplying **RX-524 CLEAN MICRO** until it is completely impregnated. This treatment is called preventive, it is very effective and helps to prevent the future appearance of micro-organisms.

In the case of saltpetre stains, proceed in applying our **RX-523 CLEAN SAL**. When the product is dry, scrape the surface with the aid of a hard bristle brush. After the mechanical cleansing of the surface, rinse with clean water in order to neutralize any remaining **CLEAN SAL** residue that could still be on the substrate.

The presence of oils or grease, especially on metal sheets should be completely removed in order to allow a correct adhesion of the product on the substrate. We recommend the use of **RX-527 CLEAN OIL** for the correct and total removal of these substances

BX-100 CPA

ColoryPaint

GREEN LABEL

TECHNICAL FEATURES

Quality	Acrylic
Solid contents	43 – 45 % in weight
Resistance to wet scrubbing (UNE EN ISO 11998)	Class 5
Density	1,36 ± 0,07 g/ml
Brookfield viscosity	10000 -18000 cP. (A/4/10)
PH	8.0 - 10.0
Conservation	12 months
Cleaning of tools	Use water
Speculated shine (UNE-EN ISO 2813)	Deep matt

INFORMATION ON DIRECTIVE 2004/42/CE CATEGORY a1

COV LIMIT	COV CONTENT
75 g/l (2007) – 30 g/l (2010)	0,95 g/l maximum

DRYING TIME (*)

TO THE TOUCH	REPAINTED	TOTAL
30' - 60'	3 - 4 hrs	15 days

(*) Drying time is influenced by the room temperature, relative humidity of the air and the absorption of the substrate.

THEORETICAL PERFORMANCE (**)

m ² applied per litre	4 - 9
----------------------------------	-------

(*) The practical performance depends on the substrate (type, state and absorption) the application method and the grade of dilution.

INFORMATION OF INTEREST

The manufacturing process of the paints is controlled in batches, which allows traceability in the case of any incident. The quality control system used includes, the individual design and development of each product, both with the raw materials used confirming manufacturing uniformity, as well as the final product obtained. The use in our facilities of eco-technology in the manufacturing process allows the completion of environmentally friendly efficient work.

- Non-flammable product.
- Avoid contact with eyes and skin.
- Smoking, eating or drinking in the area of use is prohibited.
- Comply with Health and Safety at Work Executive regulations.
- Store the product in a dry place, in its original packaging firmly closed and free from humidity.
- Store the containers between 5°C and 35°C.
- Recommended storage time: 12 months as from date of manufacture in its original packaging and kept free from humidity.

For further information on protective measures and first aid, consult the product Safety Data Sheet.

BX-100 CPA

ColoryPaint

GREEN LABEL

OBSERVATIONS

- The reading of this product's data sheet is indispensable for the correct use and application.
- The principles given in this data sheet have been obtained under normal laboratory conditions and on normal surfaces, results may vary, depending on the conditions of construction, (absorption of the surface, thickness applied, mixing water, temperature and humidity). The intervals exhibited have been obtained by means of historical measures. Slight high or low deviations to ranges presented in this technical data sheet will be admitted according to internal technical criteria and do not cause decrease in quality or will it affect the final performance of the product, being due, amongst other factors, to variations in the conditions of measure or uncertainty associated with the instruments used.
- Work conditions of the user are out of our control.
- The product should not be utilized for other uses except the ones indicated. It is advisable to follow strictly the recommendations of use given.
- A previous inspection of the state of the surface before use is fundamental.
- Do not apply on substrates with temperatures a lower than 5°C or excessively hot.
- Do not mix with any other material, it would lose its technical features.
- Painting on rainy days or maximum heat of the day is not recommended.
- Ideal temperature for applying from 5°C to 35°C.
- Maximum relative humidity: 85%.
- **ESTABLECIMIENTOS BAIXENS'** technical department informs that the new designs in the development of recent launches are considered in their experimental phase until an annual revision is made. From this point on, the product of a recent launch is considered as being totally consolidated in the market. In the meantime, **BAIXENS** reserves its right to adapt the variable specifications or ranges of work, according to technical criteria. The information subject to modification, will be identified with an asterisk at the top for easy recognition of those products which are the subject of new creation or are subject to an experimental phase or improvement in our different ranges because of market demand and or needs.
- We have a technical-sales team at your disposal for technical advice or consultation.

PACKAGING

FORMAT	13 l.	4 l.
UNITS/CASE	-	-
PALLETS	33 BUCKETS	120 BUCKETS



IPC	BX100CPANF2568A20
-----	-------------------



BAIXENS
baixens.com

Testing the difference

BAIXENS ESPAÑA / PORTUGAL
POL. IND. MONCARRA, S/N
46230 ALGINET (VALENCIA)
T.: 961.750.834
F.: 961.752.471

BAIXENS FRANCE
14, RUE DU PONT NEUF
75001 PARIS (FRANCE)
T.: 0.800.90.14.37
F.: 0.800.90.20.52

BAIXENS ITALIA / BULOVA
VIA PIETRO NENNI, 36
46019 CICOGNARA - MANTOVA (ITALY)
T.: 0375/88181/790016 F.: 0375/88831
www.bulova-pennelli.com

BAIXENS PORTUGAL / ARGATINTAS
AVENIDA PORTAS DO MINHO, Nº 711
4760 - 706 RIBEIRÃO,
V.N. FAMALICÃO
T.: 252 910 030
www.argatintas.pt

BX-105 CPA

ColoryPaint

RED LABEL

Acrylic matt paint for interior and exterior use



INFORMATION ON DIRECTIVE 2004/42/CE

A1 CATEGORY. MATT PRODUCTS FOR WALLS AND CEILINGS
(BRIGHTNESS <25 to 60°) WATER-BASED

Limit: 75 g/l COV (2007); 30 g/l COV (2010)
This product contains 18,86 g/l COV max.

SUBSTRATES

Cement, brick, plaster, paint, plaster-board boards, parameters with nooks/ plastering and masonry in general.

Substrates must be sound, dry, cohesive, absorbent, well adhered, clean and free of dust.

PROPERTIES

- Matt finish
- White colour
- Does not yellow
- Easy to apply
- Breathable
- High coverage
- Does not splash
- Good performance
- No splices
- Washable
- Contains ANTI-MOLD additives

IDEAL FOR

- Painting walls, ceilings and gypsum substrates

HOW TO USE

PREPARING THE SUBSTRATE

The substrate should be healthy, clean, strong, well adhered, consistent and be free of any trace of saltpetre, fungus, micro-organisms, grease, defocussing oils and in general any type of material that could hinder the adhesion of the product to the base.



BX-105 CPA

ColoryPaint

RED LABEL

HOW TO USE

APPLICATION CONDITIONS

Shake the product until complete equalization.

Can be applied using brush, roller or airless spray.

Protect the areas that are not to be painted (skirting, switches, door/window frames) with painting tape and/or paper.

Remove once finished and before the paint has dried in order to avoid stripping the paint.

- New masonry substrates:

The first coat can be diluted with a maximum of 5 - 10% always use clean drinking water. The second coat can be applied diluted with a maximum of 5 %.

- Old masonry substrates:

In the case of dead old gypsum or dusty bases substrates, the dust has to be cleaned off the surface and the use of **RX-501 SOLVENT-BASED FIJAPREN** as a primer and hardener, or the use of **RX-500 WATER-BASED FIJAPREN**. Once finished continue as if it was a new masonry substrate.

- Painted substrates:

Check that the paint is clean and well adhered. If on the contrary, paint should be removed by sanding or by any other convenient method (depending on the base), set the substrate using **RX-501 or RX-500** and proceed as if it was a new masonry substrate.

- Substrates with disorders:

When surface shows traces of fungus, algae or other types of micro-organisms, firstly proceed with our healing treatment **RX-524 CLEAN MICRO**. This is to be applied on the surface to be treated, and after 25 - 30 minutes performance, proceed in cleansing the substrate with the aid of a water pressure machine or a hard bristle brush.

Once completely dried, proceed in reapplying **RX-524 CLEAN MICRO** until it is completely impregnated. This treatment is called preventive, it is very effective and helps to prevent the future appearance of micro-organisms.

In the case of saltpetre stains, proceed in applying our **RX-523 CLEAN SAL**. When the product is dry, scrape the surface with the aid of a hard bristle brush. After the mechanical cleansing of the surface, rinse with clean water in order to neutralize any remaining **CLEAN SAL** residue that could still be on the substrate.

The presence of oils or grease, especially on metal sheets should be completely removed in order to allow a correct adhesion of the product on the substrate. We recommend the use of **RX-527 CLEAN OIL** for the correct and total removal of these substances

BX-105 CPA

ColoryPaint

RED LABEL

TECHNICAL FEATURES

Quality	Acrylic
Solid contents	69 – 74 % in weight
Resistance to wet scrubbing (UNE EN ISO 11998)	Class 3
Density	1,73 ± 0,07 g/ml
Brookfield viscosity	18000 -28000 cP. (A/5/10)
PH	8.0 - 10.0
Conservation	12 months
Cleaning of tools	Use water
Speculated shine (UNE-EN ISO 2813)	Deep matt

INFORMATION ON DIRECTIVE 2004/42/CE CATEGORY a1

COV LIMIT	COV CONTENT
75 g/l (2007) – 30 g/l (2010)	18,86 g/l maximum

DRYING TIME (*)

TO THE TOUCH	REPAINTED	TOTAL
30' - 60'	3 - 4 hrs	15 days

(*) Drying time is influenced by the room temperature, relative humidity of the air and the absorption of the substrate.

THEORETICAL PERFORMANCE (**)

m ² applied per litre	9 - 14
----------------------------------	--------

(*) The practical performance depends on the substrate (type, state and absorption) the application method and the grade of dilution.

INFORMATION OF INTEREST

The manufacturing process of the paints is controlled in batches, which allows traceability in the case of any incident. The quality control system used includes, the individual design and development of each product, both with the raw materials used confirming manufacturing uniformity, as well as the final product obtained. The use in our facilities of eco-technology in the manufacturing process allows the completion of environmentally friendly efficient work.

- Non-flammable product.
- Avoid contact with eyes and skin.
- Smoking, eating or drinking in the area of use is prohibited.
- Comply with Health and Safety at Work Executive regulations.
- Store the product in a dry place, in its original packaging firmly closed and free from humidity.
- Store the containers between 5°C and 35°C.
- Recommended storage time: 12 months as from date of manufacture in its original packaging and kept free from humidity.

For further information on protective measures and first aid, consult the product Safety Data Sheet.

BX-105 CPA

ColoryPaint

RED LABEL

OBSERVATIONS

- The reading of this product's data sheet is indispensable for the correct use and application.
- The principles given in this data sheet have been obtained under normal laboratory conditions and on normal surfaces, results may vary, depending on the conditions of construction, (absorption of the surface, thickness applied, mixing water, temperature and humidity). The intervals exhibited have been obtained by means of historical measures. Slight high or low deviations to ranges presented in this technical data sheet will be admitted according to internal technical criteria and do not cause decrease in quality or will it affect the final performance of the product, being due, amongst other factors, to variations in the conditions of measure or uncertainty associated with the instruments used.
- Work conditions of the user are out of our control.
- The product should not be utilized for other uses except the ones indicated. It is advisable to follow strictly the recommendations of use given.
- A previous inspection of the state of the surface before use is fundamental.
- Do not apply on substrates with temperatures a lower than 5°C or excessively hot.
- Do not mix with any other material, it would lose its technical features.
- Painting on rainy days or maximum heat of the day is not recommended.
- Ideal temperature for applying from 5°C to 35°C.
- Maximum relative humidity: 85%.
- **ESTABLECIMIENTOS BAIXENS'** technical department informs that the new designs in the development of recent launches are considered in their experimental phase until an annual revision is made. From this point on, the product of a recent launch is considered as being totally consolidated in the market. In the meantime, **BAIXENS** reserves its right to adapt the variable specifications or ranges of work, according to technical criteria. The information subject to modification, will be identified with an asterisk at the top for easy recognition of those products which are the subject of new creation or are subject to an experimental phase or improvement in our different ranges because of market demand and or needs.
- We have a technical-sales team at your disposal for technical advice or consultation.

PACKAGING

FORMAT	13 l.	4 l.
UNITS/CASE	-	-
PALLETS	33 BUCKETS	120 BUCKETS



IPC	BX105CPANF2324A20
-----	-------------------



BAIXENS
baixens.com

Testing the difference

BAIXENS ESPAÑA / PORTUGAL
POL. IND. MONCARRA, S/N
46230 ALGINET (VALENCIA)
T.: 961.750.834
F.: 961.752.471

BAIXENS FRANCE
14, RUE DU PONT NEUF
75001 PARIS (FRANCE)
T.: 0.800.90.14.37
F.: 0.800.90.20.52

BAIXENS ITALIA / BULOVA
VIA PIETRO NENNI, 36
46019 CICOGNARA - MANTOVA (ITALY)
T.: 0375/88181/790016 F.: 0375/88831
www.bulova-pennelli.com

BAIXENS PORTUGAL / ARGATINTAS
AVENIDA PORTAS DO MINHO, Nº 711
4760 - 706 RIBEIRÃO,
V.N. FAMALICÃO
T.: 252 910 030
www.argatintas.pt

BX-200 CPA

ColoryPaint

SILVER LABEL

Water-based great white matt finish acrylic paint



INFORMATION ON DIRECTIVE 2004/42/CE

A1 CATEGORY. MATT PRODUCTS FOR WALLS AND CEILINGS
(BRIGHTNESS <25 to 60°) WATER-BASED

Limit: 75 g/l COV (2007); 30 g/l COV (2010)
This product contains 16,69 g/l COV max.

SUBSTRATES

Cement, brick, plaster, paint, plaster-board boards, parameters with nooks/ plastering and masonry in general.

Substrates must be sound, dry, cohesive, absorbent, well adhered, clean and free of dust.

PROPERTIES

- Matt finish
- White colour
- Easy to apply
- Breathable
- Good coverage
- Does not splash
- Washable
- Contains ANTI-MOLD additives

IDEAL FOR

- Painting walls, ceilings, façades and gypsum substrates

HOW TO USE

PREPARING THE SUBSTRATE

The substrate should be healthy, clean, strong, well adhered, consistent and be free of any trace of saltpetre, fungus, micro-organisms, grease, defocussing oils and in general any type of material that could hinder the adhesion of the product to the base.



BX-200 CPA

ColoryPaint

SILVER LABEL

HOW TO USE

APPLICATION CONDITIONS

Shake the product until complete equalization.

Can be applied using brush, roller or airless spray.

Protect the areas that are not to be painted (skirting, switches, door/window frames) with painting tape and/or paper.

Remove once finished and before the paint has dried in order to avoid stripping the paint.

- New masonry substrates:

The first coat can be diluted with a maximum of 5 - 10% always use clean drinking water. The second coat can be applied diluted with a maximum of 5 %.

- Old masonry substrates:

In the case of dead old gypsum or dusty bases substrates, the dust has to be cleaned off the surface and the use of **RX-501 SOLVENT-BASED FIJAPREN** as a primer and hardener, or the use of **RX-500 WATER-BASED FIJAPREN**. Once finished continue as if it was a new masonry substrate.

- Painted substrates:

Check that the paint is clean and well adhered. If on the contrary, paint should be removed by sanding or by any other convenient method (depending on the base), set the substrate using **RX-501 or RX-500** and proceed as if it was a new masonry substrate.

- Substrates with disorders:

When surface shows traces of fungus, algae or other types of micro-organisms, firstly proceed with our healing treatment **RX-524 CLEAN MICRO**. This is to be applied on the surface to be treated, and after 25 - 30 minutes performance, proceed in cleansing the substrate with the aid of a water pressure machine or a hard bristle brush.

Once completely dried, proceed in reapplying **RX-524 CLEAN MICRO** until it is completely impregnated. This treatment is called preventive, it is very effective and helps to prevent the future appearance of micro-organisms.

In the case of saltpetre stains, proceed in applying our **RX-523 CLEAN SAL**. When the product is dry, scrape the surface with the aid of a hard bristle brush. After the mechanical cleansing of the surface, rinse with clean water in order to neutralize any remaining **CLEAN SAL** residue that could still be on the substrate.

The presence of oils or grease, especially on metal sheets should be completely removed in order to allow a correct adhesion of the product on the substrate. We recommend the use of **RX-527 CLEAN OIL** for the correct and total removal of these substances

BX-200 CPA

ColoryPaint

SILVER LABEL

TECHNICAL FEATURES

Quality	Acrylic
Solid contents	54 – 59 % in weight
Resistance to wet scrubbing (UNE EN ISO 11998)	Class 3
Density	1,50 ± 0,07 g/ml
Brookfield viscosity	14000 -21000 cP. (A/4/10)
PH	8.0 - 10.0
Conservation	12 months
Cleaning of tools	Use water
Speculated shine (UNE-EN ISO 2813)	Deep matt

INFORMATION ON DIRECTIVE 2004/42/CE CATEGORY a1

COV LIMIT	COV CONTENT
75 g/l (2007) – 30 g/l (2010)	16,69 g/l maximum

DRYING TIME (*)

TO THE TOUCH	REPAINTED	TOTAL
30'	3 - 4 hrs	15 days

(*) Drying time is influenced by the room temperature, relative humidity of the air and the absorption of the substrate.

THEORETICAL PERFORMANCE (**)

m ² applied per litre	13 - 18
----------------------------------	---------

(*) The practical performance depends on the substrate (type, state and absorption) the application method and the grade of dilution.

INFORMATION OF INTEREST

The manufacturing process of the paints is controlled in batches, which allows traceability in the case of any incident. The quality control system used includes, the individual design and development of each product, both with the raw materials used confirming manufacturing uniformity, as well as the final product obtained. The use in our facilities of eco-technology in the manufacturing process allows the completion of environmentally friendly efficient work.

- Non-flammable product.
- Avoid contact with eyes and skin.
- Smoking, eating or drinking in the area of use is prohibited.
- Comply with Health and Safety at Work Executive regulations.
- Store the product in a dry place, in its original packaging firmly closed and free from humidity.
- Store the containers between 5°C and 35°C.
- Recommended storage time: 12 months as from date of manufacture in its original packaging and kept free from humidity.

For further information on protective measures and first aid, consult the product Safety Data Sheet.

BX-200 CPA

ColoryPaint

SILVER LABEL

OBSERVATIONS

- The reading of this product's data sheet is indispensable for the correct use and application.
- The principles given in this data sheet have been obtained under normal laboratory conditions and on normal surfaces, results may vary, depending on the conditions of construction, (absorption of the surface, thickness applied, mixing water, temperature and humidity). The intervals exhibited have been obtained by means of historical measures. Slight high or low deviations to ranges presented in this technical data sheet will be admitted according to internal technical criteria and do not cause decrease in quality or will it affect the final performance of the product, being due, amongst other factors, to variations in the conditions of measure or uncertainty associated with the instruments used.
- Work conditions of the user are out of our control.
- The product should not be utilized for other uses except the ones indicated. It is advisable to follow strictly the recommendations of use given.
- A previous inspection of the state of the surface before use is fundamental.
- Do not apply on substrates with temperatures a lower than 5°C or excessively hot.
- Do not mix with any other material, it would lose its technical features.
- Painting on rainy days or maximum heat of the day is not recommended.
- Ideal temperature for applying from 5°C to 35°C.
- Maximum relative humidity: 85%.
- **ESTABLECIMIENTOS BAIXENS'** technical department informs that the new designs in the development of recent launches are considered in their experimental phase until an annual revision is made. From this point on, the product of a recent launch is considered as being totally consolidated in the market. In the meantime, **BAIXENS** reserves its right to adapt the variable specifications or ranges of work, according to technical criteria. The information subject to modification, will be identified with an asterisk at the top for easy recognition of those products which are the subject of new creation or are subject to an experimental phase or improvement in our different ranges because of market demand and or needs.
- We have a technical-sales team at your disposal for technical advice or consultation.

PACKAGING

FORMAT	13 l.	4 l.
UNITS/CASE	-	-
PALLETS	33 BUCKETS	120 BUCKETS



IPC	BX200CPANF2460A20
-----	-------------------



BAIXENS
baixens.com

Testing the difference

BAIXENS ESPAÑA / PORTUGAL
POL. IND. MONCARRA, S/N
46230 ALGINET (VALENCIA)
T.: 961.750.834
F.: 961.752.471

BAIXENS FRANCE
14, RUE DU PONT NEUF
75001 PARIS (FRANCE)
T.: 0.800.90.14.37
F.: 0.800.90.20.52

BAIXENS ITALIA / BULOVA
VIA PIETRO NENNI, 36
46019 CICOGNARA - MANTOVA (ITALY)
T.: 0375/88181/790016 F.: 0375/88831
www.bulova-pennelli.com

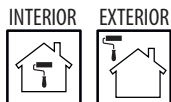
BAIXENS PORTUGAL / ARGATINTAS
AVENIDA PORTAS DO MINHO, Nº 711
4760 - 706 RIBEIRÃO,
V.N. FAMALICÃO
T.: 252 910 030
www.argatintas.pt

BX-210 CPA

ColoryPaint

BLACK LABEL

High cover matt finish acrylic paint



INFORMATION ON DIRECTIVE 2004/42/CE

A1 CATEGORY. MATT PRODUCTS FOR WALLS AND CEILINGS
(BRIGHTNESS <25 to 60°) WATER-BASED

Limit: 75 g/l COV (2007); 30 g/l COV (2010)
This product contains 2,52 g/l COV max.

SUBSTRATES

Cement, brick, plaster, paint, plaster-board boards, parameters with nooks/ plastering and masonry in general.

Substrates must be sound, dry, cohesive, absorbent, well adhered, clean and free of dust.

PROPERTIES

- | | |
|------------------------|--------------------------------|
| • Matt finish | • Low odour |
| • Good workability | • Washable |
| • White colour | • Easy to repaint |
| • Breathable | • Quick dry |
| • Excellent coverage | • Good performance |
| • Does not splash | • Contains ANTI-MOLD additives |
| • Does not turn yellow | |

IDEAL FOR

- Painting walls, ceilings, façades and gypsum substrates

HOW TO USE

PREPARING THE SUBSTRATE

The substrate should be healthy, clean, strong, well adhered, consistent and be free of any trace of saltpetre, fungus, micro-organisms, grease, defocussing oils and in general any type of material that could hinder the adhesion of the product to the base.



BX-210 CPA

ColoryPaint

BLACK LABEL

HOW TO USE

APPLICATION CONDITIONS

Shake the product until complete equalization.

Can be applied using brush, roller or airless spray.

Protect the areas that are not to be painted (skirting, switches, door/window frames) with painting tape and/or paper.

Remove once finished and before the paint has dried in order to avoid stripping the paint.

- New masonry substrates:

The first coat can be diluted with a maximum of 5 - 10% always use clean drinking water. The second coat can be applied diluted with a maximum of 5 %.

- Old masonry substrates:

In the case of dead old gypsum or dusty bases substrates, the dust has to be cleaned off the surface and the use of **RX-501 SOLVENT-BASED FIJAPREN** as a primer and hardener, or the use of **RX-500 WATER-BASED FIJAPREN**. Once finished continue as if it was a new masonry substrate.

- Painted substrates:

Check that the paint is clean and well adhered. If on the contrary, paint should be removed by sanding or by any other convenient method (depending on the base), set the substrate using **RX-501 or RX-500** and proceed as if it was a new masonry substrate.

- Substrates with disorders:

When surface shows traces of fungus, algae or other types of micro-organisms, firstly proceed with our healing treatment **RX-524 CLEAN MICRO**. This is to be applied on the surface to be treated, and after 25 - 30 minutes performance, proceed in cleansing the substrate with the aid of a water pressure machine or a hard bristle brush.

Once completely dried, proceed in reapplying **RX-524 CLEAN MICRO** until it is completely impregnated. This treatment is called preventive, it is very effective and helps to prevent the future appearance of micro-organisms.

In the case of saltpetre stains, proceed in applying our **RX-523 CLEAN SAL**. When the product is dry, scrape the surface with the aid of a hard bristle brush. After the mechanical cleansing of the surface, rinse with clean water in order to neutralize any remaining **CLEAN SAL** residue that could still be on the substrate.

The presence of oils or grease, especially on metal sheets should be completely removed in order to allow a correct adhesion of the product on the substrate. We recommend the use of **RX-527 CLEAN OIL** for the correct and total removal of these substances

BX-210 CPA**ColoryPaint****BLACK LABEL****TECHNICAL FEATURES**

Quality	Acrylic
Solid contents	56 – 61 % in weight
Resistance to wet scrubbing (UNE EN ISO 11998)	Class 3
Density	1,55 ± 0,07 g/ml
Brookfield viscosity	16000 -23000 cP. (A/5/10)
PH	8.0 - 10.0
Conservation	12 months
Cleaning of tools	Use water
Speculated shine (UNE-EN ISO 2813)	Deep matt

INFORMATION ON DIRECTIVE 2004/42/CE CATEGORY a1

COV LIMIT	COV CONTENT
75 g/l (2007) – 30 g/l (2010)	2,52 g/l maximum

DRYING TIME (*)

TO THE TOUCH	REPAINTED	TOTAL
60'	6 hrs	15 days

(*) Drying time is influenced by the room temperature, relative humidity of the air and the absorption of the substrate.

THEORETICAL PERFORMANCE (**)

m ² applied per litre	9 - 14
----------------------------------	--------

(*) The practical performance depends on the substrate (type, state and absorption) the application method and the grade of dilution.

INFORMATION OF INTEREST

The manufacturing process of the paints is controlled in batches, which allows traceability in the case of any incident. The quality control system used includes, the individual design and development of each product, both with the raw materials used confirming manufacturing uniformity, as well as the final product obtained. The use in our facilities of eco-technology in the manufacturing process allows the completion of environmentally friendly efficient work.

- Non-flammable product.
- Avoid contact with eyes and skin.
- Smoking, eating or drinking in the area of use is prohibited.
- Comply with Health and Safety at Work Executive regulations.
- Store the product in a dry place, in its original packaging firmly closed and free from humidity.
- Store the containers between 5°C and 35°C.
- Recommended storage time: 12 months as from date of manufacture in its original packaging and kept free from humidity.

For further information on protective measures and first aid, consult the product Safety Data Sheet.

BX-210 CPA

ColoryPaint

BLACK LABEL

OBSERVATIONS

- The reading of this product's data sheet is indispensable for the correct use and application.
- The principles given in this data sheet have been obtained under normal laboratory conditions and on normal surfaces, results may vary, depending on the conditions of construction, (absorption of the surface, thickness applied, mixing water, temperature and humidity). The intervals exhibited have been obtained by means of historical measures. Slight high or low deviations to ranges presented in this technical data sheet will be admitted according to internal technical criteria and do not cause decrease in quality or will it affect the final performance of the product, being due, amongst other factors, to variations in the conditions of measure or uncertainty associated with the instruments used.
- Work conditions of the user are out of our control.
- The product should not be utilized for other uses except the ones indicated. It is advisable to follow strictly the recommendations of use given.
- A previous inspection of the state of the surface before use is fundamental.
- Do not apply on substrates with temperatures a lower than 5°C or excessively hot.
- Do not mix with any other material, it would lose its technical features.
- Painting on rainy days or maximum heat of the day is not recommended.
- Ideal temperature for applying from 5°C to 35°C.
- Maximum relative humidity: 85%.
- **ESTABLECIMIENTOS BAIXENS'** technical department informs that the new designs in the development of recent launches are considered in their experimental phase until an annual revision is made. From this point on, the product of a recent launch is considered as being totally consolidated in the market. In the meantime, **BAIXENS** reserves its right to adapt the variable specifications or ranges of work, according to technical criteria. The information subject to modification, will be identified with an asterisk at the top for easy recognition of those products which are the subject of new creation or are subject to an experimental phase or improvement in our different ranges because of market demand and or needs.
- We have a technical-sales team at your disposal for technical advice or consultation.

PACKAGING

FORMAT	13 l.	4 l.
UNITS/CASE	-	-
PALLETS	33 BUCKETS	120 BUCKETS



IPC	BX210CPANF2329A20
-----	-------------------



BAIXENS
baixens.com

Testing the difference

BAIXENS ESPAÑA / PORTUGAL
POL. IND. MONCARRA, S/N
46230 ALGINET (VALENCIA)
T.: 961.750.834
F.: 961.752.471

BAIXENS FRANCE
14, RUE DU PONT NEUF
75001 PARIS (FRANCE)
T.: 0.800.90.14.37
F.: 0.800.90.20.52

BAIXENS ITALIA / BULOVA
VIA PIETRO NENNI, 36
46019 CICOGNARA - MANTOVA (ITALY)
T.: 0375/88181/790016 F.: 0375/88831
www.bulova-pennelli.com

BAIXENS PORTUGAL / ARGATINTAS
AVENIDA PORTAS DO MINHO, Nº 711
4760 - 706 RIBEIRÃO,
V.N. FAMALICÃO
T.: 252 910 030
www.argatintas.pt

BX-215 CPA

ColoryPaint

YELLOW LABEL

High cover matt finish acrylic paint



SUBSTRATES

Cement, brick, plaster, paint, plaster-board boards, parameters with nooks/ plastering and masonry in general.

Substrates must be sound, dry, cohesive, absorbent, well adhered, clean and free of dust.

PROPERTIES

- Matt finish
- Extra white colour
- Does not turn yellow
- Easy to apply
- Breathable
- Maximum coverage
- Does not splash
- Good performance
- No splices
- Washable
- Contains ANTI-MOLD additives

IDEAL FOR

- Painting walls, ceilings, façades and gypsum substrates

HOW TO USE

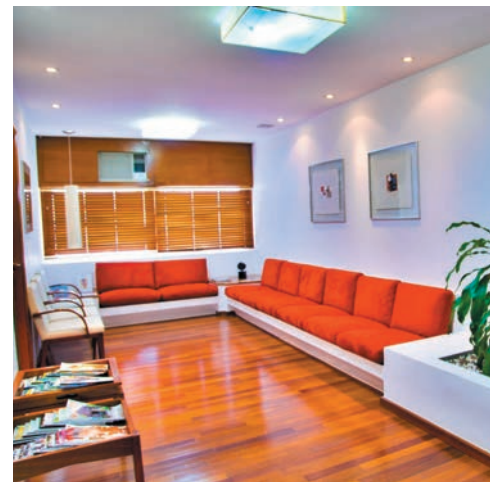
PREPARING THE SUBSTRATE

The substrate should be healthy, clean, strong, well adhered, consistent and be free of any trace of saltpetre, fungus, micro-organisms, grease, defocussing oils and in general any type of material that could hinder the adhesion of the product to the base.

INFORMATION ON DIRECTIVE 2004/42/CE

A1 CATEGORY. MATT PRODUCTS FOR WALLS AND CEILINGS
(BRIGHTNESS <25 to 60°) WATER-BASED

Limit: 75 g/l COV (2007); 30 g/l COV (2010)
This product contains 17,95 g/l COV max.



BX-215 CPA

ColoryPaint

YELLOW LABEL

HOW TO USE

APPLICATION CONDITIONS

Shake the product until complete equalization.

Can be applied using brush, roller or airless spray.

Protect the areas that are not to be painted (skirting, switches, door/window frames) with painting tape and/or paper.

Remove once finished and before the paint has dried in order to avoid stripping the paint.

- New masonry substrates:

The first coat can be diluted with a maximum of 5 - 10% always use clean drinking water. The second coat can be applied diluted with a maximum of 5 %.

- Old masonry substrates:

In the case of dead old gypsum or dusty bases substrates, the dust has to be cleaned off the surface and the use of **RX-501 SOLVENT-BASED FIJAPREN** as a primer and hardener, or the use of **RX-500 WATER-BASED FIJAPREN**. Once finished continue as if it was a new masonry substrate.

- Painted substrates:

Check that the paint is clean and well adhered. If on the contrary, paint should be removed by sanding or by any other convenient method (depending on the base), set the substrate using **RX-501 or RX-500** and proceed as if it was a new masonry substrate.

- Substrates with disorders:

When surface shows traces of fungus, algae or other types of micro-organisms, firstly proceed with our healing treatment **RX-524 CLEAN MICRO**. This is to be applied on the surface to be treated, and after 25 - 30 minutes performance, proceed in cleansing the substrate with the aid of a water pressure machine or a hard bristle brush.

Once completely dried, proceed in reapplying **RX-524 CLEAN MICRO** until it is completely impregnated. This treatment is called preventive, it is very effective and helps to prevent the future appearance of micro-organisms.

In the case of saltpetre stains, proceed in applying our **RX-523 CLEAN SAL**. When the product is dry, scrape the surface with the aid of a hard bristle brush. After the mechanical cleansing of the surface, rinse with clean water in order to neutralize any remaining **CLEAN SAL** residue that could still be on the substrate.

The presence of oils or grease, especially on metal sheets should be completely removed in order to allow a correct adhesion of the product on the substrate. We recommend the use of **RX-527 CLEAN OIL** for the correct and total removal of these substances

BX-215 CPA**ColoryPaint****YELLOW LABEL****TECHNICAL FEATURES**

Quality	Acrylic
Solid contents	56 – 61 % in weight
Resistance to wet scrubbing (UNE EN ISO 11998)	Class 2
Density	1,52 ± 0,07 g/ml
Brookfield viscosity	11000 - 19000 cP. (A/4/10)
PH	8.0 - 10.0
Conservation	12 months
Cleaning of tools	Use water
Speculated shine (UNE-EN ISO 2813)	Deep matt

INFORMATION ON DIRECTIVE 2004/42/CE CATEGORY a1

COV LIMIT	COV CONTENT
75 g/l (2007) – 30 g/l (2010)	17,95 g/l maximum

DRYING TIME (*)

TO THE TOUCH	REPAINTED	TOTAL
60'	6 hrs	15 days

(*) Drying time is influenced by the room temperature, relative humidity of the air and the absorption of the substrate.

THEORETICAL PERFORMANCE (**)

m ² applied per litre	11 - 16
----------------------------------	---------

(*) The practical performance depends on the substrate (type, state and absorption) the application method and the grade of dilution.

INFORMATION OF INTEREST

The manufacturing process of the paints is controlled in batches, which allows traceability in the case of any incident. The quality control system used includes, the individual design and development of each product, both with the raw materials used confirming manufacturing uniformity, as well as the final product obtained. The use in our facilities of eco-technology in the manufacturing process allows the completion of environmentally friendly efficient work.

- Non-flammable product.
- Avoid contact with eyes and skin.
- Smoking, eating or drinking in the area of use is prohibited.
- Comply with Health and Safety at Work Executive regulations.
- Store the product in a dry place, in its original packaging firmly closed and free from humidity.
- Store the containers between 5°C and 35°C.
- Recommended storage time: 12 months as from date of manufacture in its original packaging and kept free from humidity.

For further information on protective measures and first aid, consult the product Safety Data Sheet.

BX-215 CPA

ColoryPaint

YELLOW LABEL

OBSERVATIONS

- The reading of this product's data sheet is indispensable for the correct use and application.
- The principles given in this data sheet have been obtained under normal laboratory conditions and on normal surfaces, results may vary, depending on the conditions of construction, (absorption of the surface, thickness applied, mixing water, temperature and humidity). The intervals exhibited have been obtained by means of historical measures. Slight high or low deviations to ranges presented in this technical data sheet will be admitted according to internal technical criteria and do not cause decrease in quality or will it affect the final performance of the product, being due, amongst other factors, to variations in the conditions of measure or uncertainty associated with the instruments used.
- Work conditions of the user are out of our control.
- The product should not be utilized for other uses except the ones indicated. It is advisable to follow strictly the recommendations of use given.
- A previous inspection of the state of the surface before use is fundamental.
- Do not apply on substrates with temperatures a lower than 5°C or excessively hot.
- Do not mix with any other material, it would lose its technical features.
- Painting on rainy days or maximum heat of the day is not recommended.
- Ideal temperature for applying from 5°C to 35°C.
- Maximum relative humidity: 85%.
- **ESTABLECIMIENTOS BAIXENS'** technical department informs that the new designs in the development of recent launches are considered in their experimental phase until an annual revision is made. From this point on, the product of a recent launch is considered as being totally consolidated in the market. In the meantime, **BAIXENS** reserves its right to adapt the variable specifications or ranges of work, according to technical criteria. The information subject to modification, will be identified with an asterisk at the top for easy recognition of those products which are the subject of new creation or are subject to an experimental phase or improvement in our different ranges because of market demand and or needs.
- We have a technical-sales team at your disposal for technical advice or consultation.

PACKAGING

FORMAT	13 l.	4 l.
UNITS/CASE	-	-
PALLETS	33 BUCKETS	120 BUCKETS



IPC	BX215CPANF2459A20
-----	-------------------



BAIXENS
baixens.com

Testing the difference

BAIXENS ESPAÑA / PORTUGAL
POL. IND. MONCARRA, S/N
46230 ALGINET (VALENCIA)
T.: 961.750.834
F.: 961.752.471

BAIXENS FRANCE
14, RUE DU PONT NEUF
75001 PARIS (FRANCE)
T.: 0.800.90.14.37
F.: 0.800.90.20.52

BAIXENS ITALIA / BULOVA
VIA PIETRO NENNI, 36
46019 CICOGNARA - MANTOVA (ITALY)
T.: 0375/88181/790016 F.: 0375/88831
www.bulova-pennelli.com

BAIXENS PORTUGAL / ARGATINTAS
AVENIDA PORTAS DO MINHO, Nº 711
4760 - 706 RIBEIRÃO,
V.N. FAMALICÃO
T.: 252 910 030
www.argatintas.pt

BX-225 CPA

ColoryPaint

BLUE LABEL

Matt finish acrylic paint with maximum covering special for dry walls



SUBSTRATES

Cement, brick, plaster, paint, dry walls, parameters with nooks/plastering and masonry in general.

Substrates must be sound, dry, cohesive, absorbent, well adhered, clean and free of dust.

PROPERTIES

- Matt finish
- Good workability
- Breathable
- Maximum coverage
- Does not splash
- Does not yellow
- Low odour
- Washable
- Easy to repaint
- Quick dry
- Good performance
- Special for laminated plaster boards - dry walls
- Contains anti-corrosive additives
- Contains ANTI-MOLD additives

IDEAL FOR

- Painting walls, ceilings, façades and gypsum substrates

HOW TO USE

PREPARING THE SUBSTRATE

The substrate should be healthy, clean, strong, well adhered, consistent and be free of any trace of saltpetre, fungus, micro-organisms, grease, defocussing oils and in general any type of material that could hinder the adhesion of the product to the base.

INFORMATION ON DIRECTIVE 2004/42/CE

A1 CATEGORY. MATT PRODUCTS FOR WALLS AND CEILINGS
(BRIGHTNESS <25 to 60°) WATER-BASED

Limit: 75 g/l COV (2007); 30 g/l COV (2010)
This product contains 17,66 g/l COV max.



BX-225 CPA

ColoryPaint

BLUE LABEL

HOW TO USE

APPLICATION CONDITIONS

Shake the product until complete equalization.

Can be applied using brush, roller or airless spray.

Protect the areas that are not to be painted (skirting, switches, door/window frames) with painting tape and/or paper.

Remove once finished and before the paint has dried in order to avoid stripping the paint.

- New masonry substrates:

The first coat can be diluted with a maximum of 5 - 10% always use clean drinking water. The second coat can be applied diluted with a maximum of 5 %.

- Old masonry substrates:

In the case of dead old gypsum or dusty bases substrates, the dust has to be cleaned off the surface and the use of **RX-501 SOLVENT-BASED FIJAPREN** as a primer and hardener, or the use of **RX-500 WATER-BASED FIJAPREN**. Once finished continue as if it was a new masonry substrate.

- Painted substrates:

Check that the paint is clean and well adhered. If on the contrary, paint should be removed by sanding or by any other convenient method (depending on the base), set the substrate using **RX-501 or RX-500** and proceed as if it was a new masonry substrate.

- Substrates with disorders:

When surface shows traces of fungus, algae or other types of micro-organisms, firstly proceed with our healing treatment **RX-524 CLEAN MICRO**. This is to be applied on the surface to be treated, and after 25 - 30 minutes performance, proceed in cleansing the substrate with the aid of a water pressure machine or a hard bristle brush.

Once completely dried, proceed in reapplying **RX-524 CLEAN MICRO** until it is completely impregnated. This treatment is called preventive, it is very effective and helps to prevent the future appearance of micro-organisms.

In the case of saltpetre stains, proceed in applying our **RX-523 CLEAN SAL**. When the product is dry, scrape the surface with the aid of a hard bristle brush. After the mechanical cleansing of the surface, rinse with clean water in order to neutralize any remaining **CLEAN SAL** residue that could still be on the substrate.

The presence of oils or grease, especially on metal sheets should be completely removed in order to allow a correct adhesion of the product on the substrate. We recommend the use of **RX-527 CLEAN OIL** for the correct and total removal of these substances

BX-225 CPA

ColoryPaint

BLUE LABEL

TECHNICAL FEATURES

Quality	Acrylic
Solid contents	58 – 63 % in weight
Resistance to wet scrubbing (UNE EN ISO 11998)	Class 3
Density	1,59 ± 0,07 g/ml
Brookfield viscosity	10000 -18000 cP. (A/5/10)
PH	8.0 - 10.0
Conservation	12 months
Cleaning of tools	Use water
Speculated shine (UNE-EN ISO 2813)	Deep matt

INFORMATION ON DIRECTIVE 2004/42/CE CATEGORY a1

COV LIMIT	COV CONTENT
75 g/l (2007) – 30 g/l (2010)	17,66 g/l maximum

DRYING TIME (*)

TO THE TOUCH	REPAINTED	TOTAL
30' - 60'	5 - 7 hrs	15 days

(*) Drying time is influenced by the room temperature, relative humidity of the air and the absorption of the substrate.

THEORETICAL PERFORMANCE (**)

m ² applied per litre	8 - 12
----------------------------------	--------

(*) The practical performance depends on the substrate (type, state and absorption) the application method and the grade of dilution.

INFORMATION OF INTEREST

The manufacturing process of the paints is controlled in batches, which allows traceability in the case of any incident. The quality control system used includes, the individual design and development of each product, both with the raw materials used confirming manufacturing uniformity, as well as the final product obtained. The use in our facilities of eco-technology in the manufacturing process allows the completion of environmentally friendly efficient work.

- Non-flammable product.
- Avoid contact with eyes and skin.
- Smoking, eating or drinking in the area of use is prohibited.
- Comply with Health and Safety at Work Executive regulations.
- Store the product in a dry place, in its original packaging firmly closed and free from humidity.
- Store the containers between 5°C and 35°C.
- Recommended storage time: 12 months as from date of manufacture in its original packaging and kept free from humidity.

For further information on protective measures and first aid, consult the product Safety Data Sheet.

BX-225 CPA

ColoryPaint

BLUE LABEL

OBSERVATIONS

- The reading of this product's data sheet is indispensable for the correct use and application.
- The principles given in this data sheet have been obtained under normal laboratory conditions and on normal surfaces, results may vary, depending on the conditions of construction, (absorption of the surface, thickness applied, mixing water, temperature and humidity). The intervals exhibited have been obtained by means of historical measures. Slight high or low deviations to ranges presented in this technical data sheet will be admitted according to internal technical criteria and do not cause decrease in quality or will it affect the final performance of the product, being due, amongst other factors, to variations in the conditions of measure or uncertainty associated with the instruments used.
- Work conditions of the user are out of our control.
- The product should not be utilized for other uses except the ones indicated. It is advisable to follow strictly the recommendations of use given.
- A previous inspection of the state of the surface before use is fundamental.
- Do not apply on substrates with temperatures a lower than 5°C or excessively hot.
- Do not mix with any other material, it would lose its technical features.
- Painting on rainy days or maximum heat of the day is not recommended.
- Ideal temperature for applying from 5°C to 35°C.
- Maximum relative humidity: 85%.
- **ESTABLECIMIENTOS BAIXENS'** technical department informs that the new designs in the development of recent launches are considered in their experimental phase until an annual revision is made. From this point on, the product of a recent launch is considered as being totally consolidated in the market. In the meantime, **BAIXENS** reserves its right to adapt the variable specifications or ranges of work, according to technical criteria. The information subject to modification, will be identified with an asterisk at the top for easy recognition of those products which are the subject of new creation or are subject to an experimental phase or improvement in our different ranges because of market demand and or needs.
- We have a technical-sales team at your disposal for technical advice or consultation.

PACKAGING

FORMAT	13 l.	4 l.
UNITS/CASE	-	-
PALLETS	33 BUCKETS	120 BUCKETS



IPC	BX225CPANF2618A20
-----	-------------------



BAIXENS
baixens.com

Testing the difference

BAIXENS ESPAÑA / PORTUGAL
POL. IND. MONCARRA, S/N
46230 ALGINET (VALENCIA)
T.: 961.750.834
F.: 961.752.471

BAIXENS FRANCE
14, RUE DU PONT NEUF
75001 PARIS (FRANCE)
T.: 0.800.90.14.37
F.: 0.800.90.20.52

BAIXENS ITALIA / BULOVA
VIA PIETRO NENNI, 36
46019 CICOGNARA - MANTOVA (ITALY)
T.: 0375/88181/790016 F.: 0375/88831
www.bulova-pennelli.com

BAIXENS PORTUGAL / ARGATINTAS
AVENIDA PORTAS DO MINHO, Nº 711
4760 - 706 RIBEIRÃO,
V.N. FAMALICÃO
T.: 252 910 030
www.argatintas.pt

BX-240 CPA

ColoryPaint

GOLD LABEL

Excellent covering and workability acrylic paint



SUBSTRATES

Cement, brick, plaster, paint, plaster-board boards, parameters with nooks/ plastering and masonry in general.

Substrates must be sound, dry, cohesive, absorbent, well adhered, clean and free of dust.

PROPERTIES

- | | |
|----------------------|--------------------------------|
| • Matt finish | • High coverage |
| • White colour | • Does not splash |
| • Does not yellow | • Excellent cleansing |
| • Easy to apply | • No splices |
| • Breathable | • Good performance |
| • Excellent adhesion | • Contains ANTI-MOLD additives |

IDEAL FOR

- Painting walls, ceilings, façades and gypsum substrates

HOW TO USE

PREPARING THE SUBSTRATE

The substrate should be healthy, clean, strong, well adhered, consistent and be free of any trace of saltpetre, fungus, micro-organisms, grease, defocussing oils and in general any type of material that could hinder the adhesion of the product to the base.

INFORMATION ON DIRECTIVE 2004/42/CE

A1 CATEGORY. MATT PRODUCTS FOR WALLS AND CEILINGS
(BRIGHTNESS <25 to 60°) WATER-BASED

Limit: 75 g/l COV (2007); 30 g/l COV (2010)
This product contains 17,66 g/l COV max.



BX-240 CPA

ColoryPaint

GOLD LABEL

HOW TO USE

APPLICATION CONDITIONS

Shake the product until complete equalization.

Can be applied using brush, roller or airless spray.

Protect the areas that are not to be painted (skirting, switches, door/window frames) with painting tape and/or paper.

Remove once finished and before the paint has dried in order to avoid stripping the paint.

- New masonry substrates:

The first coat can be diluted with a maximum of 5 - 10% always use clean drinking water. The second coat can be applied diluted with a maximum of 5 %.

- Old masonry substrates:

In the case of dead old gypsum or dusty bases substrates, the dust has to be cleaned off the surface and the use of **RX-501 SOLVENT-BASED FIJAPREN** as a primer and hardener, or the use of **RX-500 WATER-BASED FIJAPREN**. Once finished continue as if it was a new masonry substrate.

- Painted substrates:

Check that the paint is clean and well adhered. If on the contrary, paint should be removed by sanding or by any other convenient method (depending on the base), set the substrate using **RX-501 or RX-500** and proceed as if it was a new masonry substrate.

- Substrates with disorders:

When surface shows traces of fungus, algae or other types of micro-organisms, firstly proceed with our healing treatment **RX-524 CLEAN MICRO**. This is to be applied on the surface to be treated, and after 25 - 30 minutes performance, proceed in cleansing the substrate with the aid of a water pressure machine or a hard bristle brush.

Once completely dried, proceed in reapplying **RX-524 CLEAN MICRO** until it is completely impregnated. This treatment is called preventive, it is very effective and helps to prevent the future appearance of micro-organisms.

In the case of saltpetre stains, proceed in applying our **RX-523 CLEAN SAL**. When the product is dry, scrape the surface with the aid of a hard bristle brush. After the mechanical cleansing of the surface, rinse with clean water in order to neutralize any remaining **CLEAN SAL** residue that could still be on the substrate.

The presence of oils or grease, especially on metal sheets should be completely removed in order to allow a correct adhesion of the product on the substrate. We recommend the use of **RX-527 CLEAN OIL** for the correct and total removal of these substances

BX-240 CPA

ColoryPaint

GOLD LABEL

TECHNICAL FEATURES

Quality	Acrylic
Solid contents	58 – 63 % in weight
Resistance to wet scrubbing (UNE EN ISO 11998)	Class 3
Density	1,59 ± 0,07 g/ml
Brookfield viscosity	10000 -18000 cP. (A/5/10)
PH	8.0 - 10.0
Conservation	12 months
Cleaning of tools	Use water
Speculated shine (UNE-EN ISO 2813)	Deep matt

INFORMATION ON DIRECTIVE 2004/42/CE CATEGORY a1	
COV LIMIT	COV CONTENT
75 g/l (2007) – 30 g/l (2010)	17,66 g/l maximum

DRYING TIME (*)		
TO THE TOUCH	REPAINTED	TOTAL
30' - 60'	5 - 7 hrs	15 days

(*) Drying time is influenced by the room temperature, relative humidity of the air and the absorption of the substrate.

THEORETICAL PERFORMANCE (**)	
m ² applied per litre	8 - 12

(*) The practical performance depends on the substrate (type, state and absorption) the application method and the grade of dilution.

INFORMATION OF INTEREST

The manufacturing process of the paints is controlled in batches, which allows traceability in the case of any incident. The quality control system used includes, the individual design and development of each product, both with the raw materials used confirming manufacturing uniformity, as well as the final product obtained. The use in our facilities of eco-technology in the manufacturing process allows the completion of environmentally friendly efficient work.

- Non-flammable product.
- Avoid contact with eyes and skin.
- Smoking, eating or drinking in the area of use is prohibited.
- Comply with Health and Safety at Work Executive regulations.
- Store the product in a dry place, in its original packaging firmly closed and free from humidity.
- Store the containers between 5°C and 35°C.
- Recommended storage time: 12 months as from date of manufacture in its original packaging and kept free from humidity.

For further information on protective measures and first aid, consult the product Safety Data Sheet.

BX-240 CPA

ColoryPaint

GOLD LABEL

OBSERVATIONS

- The reading of this product's data sheet is indispensable for the correct use and application.
- The principles given in this data sheet have been obtained under normal laboratory conditions and on normal surfaces, results may vary, depending on the conditions of construction, (absorption of the surface, thickness applied, mixing water, temperature and humidity). The intervals exhibited have been obtained by means of historical measures. Slight high or low deviations to ranges presented in this technical data sheet will be admitted according to internal technical criteria and do not cause decrease in quality or will it affect the final performance of the product, being due, amongst other factors, to variations in the conditions of measure or uncertainty associated with the instruments used.
- Work conditions of the user are out of our control.
- The product should not be utilized for other uses except the ones indicated. It is advisable to follow strictly the recommendations of use given.
- A previous inspection of the state of the surface before use is fundamental.
- Do not apply on substrates with temperatures a lower than 5°C or excessively hot.
- Do not mix with any other material, it would lose its technical features.
- Painting on rainy days or maximum heat of the day is not recommended.
- Ideal temperature for applying from 5°C to 35°C.
- Maximum relative humidity: 85%.
- **ESTABLECIMIENTOS BAIXENS'** technical department informs that the new designs in the development of recent launches are considered in their experimental phase until an annual revision is made. From this point on, the product of a recent launch is considered as being totally consolidated in the market. In the meantime, **BAIXENS** reserves its right to adapt the variable specifications or ranges of work, according to technical criteria. The information subject to modification, will be identified with an asterisk at the top for easy recognition of those products which are the subject of new creation or are subject to an experimental phase or improvement in our different ranges because of market demand and or needs.
- We have a technical-sales team at your disposal for technical advice or consultation.

PACKAGING

FORMAT	13 l.	4 l.
UNITS/CASE	-	-
PALLETS	33 BUCKETS	120 BUCKETS



IPC	BX240CPANF2697A20
-----	-------------------



BAIXENS
baixens.com

Testing the difference

BAIXENS ESPAÑA / PORTUGAL
POL. IND. MONCARRA, S/N
46230 ALGINET (VALENCIA)
T.: 961.750.834
F.: 961.752.471

BAIXENS FRANCE
14, RUE DU PONT NEUF
75001 PARIS (FRANCE)
T.: 0.800.90.14.37
F.: 0.800.90.20.52

BAIXENS ITALIA / BULOVA
VIA PIETRO NENNI, 36
46019 CICOGNARA - MANTOVA (ITALY)
T.: 0375/88181/790016 F.: 0375/88831
www.bulova-pennelli.com

BAIXENS PORTUGAL / ARGATINTAS
AVENIDA PORTAS DO MINHO, Nº 711
4760 - 706 RIBEIRÃO,
V.N. FAMALICÃO
T.: 252 910 030
www.argatintas.pt

BX-250 CPA

ColoryPaint

PLATINUM LABEL

High quality matt finish acrylic paint



INFORMATION ON DIRECTIVE 2004/42/CE

A1 CATEGORY. MATT PRODUCTS FOR WALLS AND CEILINGS
(BRIGHTNESS <25 to 60°) WATER-BASED

Limit: 75 g/l COV (2007); 30 g/l COV (2010)
This product contains 27,84 g/l COV max.

SUBSTRATES

Cement, brick, plaster, paint, plaster-board boards, parameters with nooks/ plastering and masonry in general.

Substrates must be sound, dry, cohesive, absorbent, well adhered, clean and free of dust.

PROPERTIES

- | | |
|------------------------|--------------------------------|
| • Matt finish | • Alkali resistant |
| • White colour | • Excellent coverage |
| • Does not turn yellow | • Does not splash |
| • Weatherproof | • No splices |
| • Easy to apply | • Good performance |
| • Breathable | • Contains ANTI-MOLD additives |
| • Very washable | |

IDEAL FOR

- Painting walls, ceilings, façades and gypsum substrates

HOW TO USE

PREPARING THE SUBSTRATE

The substrate should be healthy, clean, strong, well adhered, consistent and be free of any trace of saltpetre, fungus, micro-organisms, grease, defocussing oils and in general any type of material that could hinder the adhesion of the product to the base.



BX-250 CPA

ColoryPaint

PLATINUM LABEL

HOW TO USE

APPLICATION CONDITIONS

Shake the product until complete equalization.

Can be applied using brush, roller or airless spray.

Protect the areas that are not to be painted (skirting, switches, door/window frames) with painting tape and/or paper.

Remove once finished and before the paint has dried in order to avoid stripping the paint.

- New masonry substrates:

The first coat can be diluted with a maximum of 5 - 10% always use clean drinking water. The second coat can be applied diluted with a maximum of 5 %.

- Old masonry substrates:

In the case of dead old gypsum or dusty bases substrates, the dust has to be cleaned off the surface and the use of **RX-501 SOLVENT-BASED FIJAPREN** as a primer and hardener, or the use of **RX-500 WATER-BASED FIJAPREN**. Once finished continue as if it was a new masonry substrate.

- Painted substrates:

Check that the paint is clean and well adhered. If on the contrary, paint should be removed by sanding or by any other convenient method (depending on the base), set the substrate using **RX-501 or RX-500** and proceed as if it was a new masonry substrate.

- Substrates with disorders:

When surface shows traces of fungus, algae or other types of micro-organisms, firstly proceed with our healing treatment **RX-524 CLEAN MICRO**. This is to be applied on the surface to be treated, and after 25 - 30 minutes performance, proceed in cleansing the substrate with the aid of a water pressure machine or a hard bristle brush.

Once completely dried, proceed in reapplying **RX-524 CLEAN MICRO** until it is completely impregnated. This treatment is called preventive, it is very effective and helps to prevent the future appearance of micro-organisms.

In the case of saltpetre stains, proceed in applying our **RX-523 CLEAN SAL**. When the product is dry, scrape the surface with the aid of a hard bristle brush. After the mechanical cleansing of the surface, rinse with clean water in order to neutralize any remaining **CLEAN SAL** residue that could still be on the substrate.

The presence of oils or grease, especially on metal sheets should be completely removed in order to allow a correct adhesion of the product on the substrate. We recommend the use of **RX-527 CLEAN OIL** for the correct and total removal of these substances

BX-250 CPA**ColoryPaint****PLATINUM LABEL****TECHNICAL FEATURES**

Quality	Acrylic
Solid contents	64 – 69 % in weight
Resistance to wet scrubbing (UNE EN ISO 11998)	Class 2
Density	1,66 ± 0,07 g/ml
Brookfield viscosity	25000 -35000 cP. (A/5/10)
PH	8.0 - 10.0
Conservation	12 months
Cleaning of tools	Use water
Speculated shine (UNE-EN ISO 2813)	Deep matt

INFORMATION ON DIRECTIVE 2004/42/CE CATEGORY a1

COV LIMIT	COV CONTENT
75 g/l (2007) – 30 g/l (2010)	27,84 g/l maximum

DRYING TIME (*)

TO THE TOUCH	REPAINTED	TOTAL
30' - 60'	5 - 7 hrs	15 days

(*) Drying time is influenced by the room temperature, relative humidity of the air and the absorption of the substrate.

THEORETICAL PERFORMANCE (**)

m ² applied per litre	11 - 16
----------------------------------	---------

(*) The practical performance depends on the substrate (type, state and absorption) the application method and the grade of dilution.

INFORMATION OF INTEREST

The manufacturing process of the paints is controlled in batches, which allows traceability in the case of any incident. The quality control system used includes, the individual design and development of each product, both with the raw materials used confirming manufacturing uniformity, as well as the final product obtained. The use in our facilities of eco-technology in the manufacturing process allows the completion of environmentally friendly efficient work.

- Non-flammable product.
- Avoid contact with eyes and skin.
- Smoking, eating or drinking in the area of use is prohibited.
- Comply with Health and Safety at Work Executive regulations.
- Store the product in a dry place, in its original packaging firmly closed and free from humidity.
- Store the containers between 5°C and 35°C.
- Recommended storage time: 12 months as from date of manufacture in its original packaging and kept free from humidity.

For further information on protective measures and first aid, consult the product Safety Data Sheet.

BX-250 CPA

ColoryPaint

PLATINUM LABEL

OBSERVATIONS

- The reading of this product's data sheet is indispensable for the correct use and application.
- The principles given in this data sheet have been obtained under normal laboratory conditions and on normal surfaces, results may vary, depending on the conditions of construction, (absorption of the surface, thickness applied, mixing water, temperature and humidity). The intervals exhibited have been obtained by means of historical measures. Slight high or low deviations to ranges presented in this technical data sheet will be admitted according to internal technical criteria and do not cause decrease in quality or will it affect the final performance of the product, being due, amongst other factors, to variations in the conditions of measure or uncertainty associated with the instruments used.
- Work conditions of the user are out of our control.
- The product should not be utilized for other uses except the ones indicated. It is advisable to follow strictly the recommendations of use given.
- A previous inspection of the state of the surface before use is fundamental.
- Do not apply on substrates with temperatures a lower than 5°C or excessively hot.
- Do not mix with any other material, it would lose its technical features.
- Painting on rainy days or maximum heat of the day is not recommended.
- Ideal temperature for applying from 5°C to 35°C.
- Maximum relative humidity: 85%.
- **ESTABLECIMIENTOS BAIXENS'** technical department informs that the new designs in the development of recent launches are considered in their experimental phase until an annual revision is made. From this point on, the product of a recent launch is considered as being totally consolidated in the market. In the meantime, **BAIXENS** reserves its right to adapt the variable specifications or ranges of work, according to technical criteria. The information subject to modification, will be identified with an asterix at the top for easy recognition of those products which are the subject of new creation or are subject to an experimental phase or improvement in our different ranges because of market demand and or needs.
- We have a technical-sales team at your disposal for technical advice or consultation.

PACKAGING

FORMAT	13 l.	4 l.
UNITS/CASE	-	-
PALLETS	33 BUCKETS	120 BUCKETS



IPC BX250CPANF2664A20



BAIXENS
baixens.com

Testing the difference

BAIXENS ESPAÑA / PORTUGAL
POL. IND. MONCARRA, S/N
46230 ALGINET (VALENCIA)
T.: 961.750.834
F.: 961.752.471

BAIXENS FRANCE
14, RUE DU PONT NEUF
75001 PARIS (FRANCE)
T.: 0.800.90.14.37
F.: 0.800.90.20.52

BAIXENS ITALIA / BULOVA
VIA PIETRO NENNI, 36
46019 CICOGNARA - MANTOVA (ITALY)
T.: 0375/88181/790016 F.: 0375/88831
www.bulova-pennelli.com

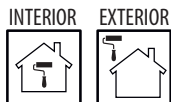
BAIXENS PORTUGAL / ARGATINTAS
AVENIDA PORTAS DO MINHO, Nº 711
4760 - 706 RIBEIRÃO,
V.N. FAMALICÃO
T.: 252 910 030
www.argatintas.pt

BX-260 CPA

ColoryPaint

TITANIUM LABEL

Acryl siloxane paint for high quality finish



INFORMATION ON DIRECTIVE 2004/42/CE

A1 CATEGORY. MATT PRODUCTS FOR WALLS AND CEILINGS
(BRIGHTNESS <25 to 60°) WATER-BASED

Limit: 75 g/l COV (2007); 30 g/l COV (2010)
This product contains 18,31 g/l COV max.

SUBSTRATES

Cement, brick, plaster, paint, plaster-board boards, parameters with nooks/ plastering and masonry in general.

Substrates must be sound, dry, cohesive, absorbent, well adhered, clean and free of dust.

PROPERTIES

- | | |
|-------------------------|--------------------------------|
| • Matt finish | • Low odour |
| • White colour | • Perfect finish |
| • Siloxane product | • Good performance |
| • Does not turn yellow | • Excelent coverage |
| • Easy to apply | • Does not splash |
| • Breathable | • Washable |
| • Great levelling power | • Pearl effect |
| • High decoration | • Contains ANTI-MOLD additives |

IDEAL FOR

- Painting walls, ceilings, façades and gypsum substrates

HOW TO USE

PREPARING THE SUBSTRATE

The substrate should be healthy, clean, strong, well adhered, consistent and be free of any trace of saltpetre, fungus, micro-organisms, grease, defocussing oils and in general any type of material that could hinder the adhesion of the product to the base.



BX-260 CPA

ColoryPaint

TITANIUM LABEL

HOW TO USE

APPLICATION CONDITIONS

Shake the product until complete equalization.

Can be applied using brush, roller or airless spray.

Protect the areas that are not to be painted (skirting, switches, door/window frames) with painting tape and/or paper.

Remove once finished and before the paint has dried in order to avoid stripping the paint.

- New masonry substrates:

The first coat can be diluted with a maximum of 5 - 10% always use clean drinking water. The second coat can be applied diluted with a maximum of 5 %.

- Old masonry substrates:

In the case of dead old gypsum or dusty bases substrates, the dust has to be cleaned off the surface and the use of **RX-501 SOLVENT-BASED FIJAPREN** as a primer and hardener, or the use of **RX-500 WATER-BASED FIJAPREN**. Once finished continue as if it was a new masonry substrate.

- Painted substrates:

Check that the paint is clean and well adhered. If on the contrary, paint should be removed by sanding or by any other convenient method (depending on the base), set the substrate using **RX-501 or RX-500** and proceed as if it was a new masonry substrate.

- Substrates with disorders:

When surface shows traces of fungus, algae or other types of micro-organisms, firstly proceed with our healing treatment **RX-524 CLEAN MICRO**. This is to be applied on the surface to be treated, and after 25 - 30 minutes performance, proceed in cleansing the substrate with the aid of a water pressure machine or a hard bristle brush.

Once completely dried, proceed in reapplying **RX-524 CLEAN MICRO** until it is completely impregnated. This treatment is called preventive, it is very effective and helps to prevent the future appearance of micro-organisms.

In the case of saltpetre stains, proceed in applying our **RX-523 CLEAN SAL**. When the product is dry, scrape the surface with the aid of a hard bristle brush. After the mechanical cleansing of the surface, rinse with clean water in order to neutralize any remaining **CLEAN SAL** residue that could still be on the substrate.

The presence of oils or grease, especially on metal sheets should be completely removed in order to allow a correct adhesion of the product on the substrate. We recommend the use of **RX-527 CLEAN OIL** for the correct and total removal of these substances

BX-260 CPA**ColoryPaint****TITANIUM LABEL****TECHNICAL FEATURES**

Quality	Acrylic
Solid contents	67 – 72 % in weight
Resistance to wet scrubbing (UNE EN ISO 11998)	Class 1
Density	1,67 ± 0,07 g/ml
Brookfield viscosity	25000 -35000 cP. (A/5/10)
PH	8.0 - 10.0
Conservation	12 months
Cleaning of tools	Use water
Speculated shine (UNE-EN ISO 2813)	Deep matt

INFORMATION ON DIRECTIVE 2004/42/CE CATEGORY a1

COV LIMIT	COV CONTENT
75 g/l (2007) – 30 g/l (2010)	18,16 g/l maximum

DRYING TIME (*)

TO THE TOUCH	REPAINTED	TOTAL
30' - 60'	5 - 7 hrs	15 days

(*) Drying time is influenced by the room temperature, relative humidity of the air and the absorption of the substrate.

THEORETICAL PERFORMANCE (**)

m ² applied per litre	12 - 14
----------------------------------	---------

(*) The practical performance depends on the substrate (type, state and absorption) the application method and the grade of dilution.

INFORMATION OF INTEREST

The manufacturing process of the paints is controlled in batches, which allows traceability in the case of any incident. The quality control system used includes, the individual design and development of each product, both with the raw materials used confirming manufacturing uniformity, as well as the final product obtained. The use in our facilities of eco-technology in the manufacturing process allows the completion of environmentally friendly efficient work.

- Non-flammable product.
- Avoid contact with eyes and skin.
- Smoking, eating or drinking in the area of use is prohibited.
- Comply with Health and Safety at Work Executive regulations.
- Store the product in a dry place, in its original packaging firmly closed and free from humidity.
- Store the containers between 5°C and 35°C.
- Recommended storage time: 12 months as from date of manufacture in its original packaging and kept free from humidity.

For further information on protective measures and first aid, consult the product Safety Data Sheet.

BX-260 CPA

ColoryPaint

TITANIUM LABEL

OBSERVATIONS

- The reading of this product's data sheet is indispensable for the correct use and application.
- The principles given in this data sheet have been obtained under normal laboratory conditions and on normal surfaces, results may vary, depending on the conditions of construction, (absorption of the surface, thickness applied, mixing water, temperature and humidity). The intervals exhibited have been obtained by means of historical measures. Slight high or low deviations to ranges presented in this technical data sheet will be admitted according to internal technical criteria and do not cause decrease in quality or will it affect the final performance of the product, being due, amongst other factors, to variations in the conditions of measure or uncertainty associated with the instruments used.
- Work conditions of the user are out of our control.
- The product should not be utilized for other uses except the ones indicated. It is advisable to follow strictly the recommendations of use given.
- A previous inspection of the state of the surface before use is fundamental.
- Do not apply on substrates with temperatures a lower than 5°C or excessively hot.
- Do not mix with any other material, it would lose its technical features.
- Painting on rainy days or maximum heat of the day is not recommended.
- Ideal temperature for applying from 5°C to 35°C.
- Maximum relative humidity: 85%.
- **ESTABLECIMIENTOS BAIXENS'** technical department informs that the new designs in the development of recent launches are considered in their experimental phase until an annual revision is made. From this point on, the product of a recent launch is considered as being totally consolidated in the market. In the meantime, **BAIXENS** reserves its right to adapt the variable specifications or ranges of work, according to technical criteria. The information subject to modification, will be identified with an asterisk at the top for easy recognition of those products which are the subject of new creation or are subject to an experimental phase or improvement in our different ranges because of market demand and or needs.
- We have a technical-sales team at your disposal for technical advice or consultation.

PACKAGING

FORMAT	13 l.	4 l.
UNITS/CASE	-	-
PALLETS	33 BUCKETS	120 BUCKETS



IPC	BX260CPANF2690A20
-----	-------------------



BAIXENS
baixens.com

Testing the difference

BAIXENS ESPAÑA / PORTUGAL
POL. IND. MONCARRA, S/N
46230 ALGINET (VALENCIA)
T.: 961.750.834
F.: 961.752.471

BAIXENS FRANCE
14, RUE DU PONT NEUF
75001 PARIS (FRANCE)
T.: 0.800.90.14.37
F.: 0.800.90.20.52

BAIXENS ITALIA / BULOVA
VIA PIETRO NENNI, 36
46019 CICOGNARA - MANTOVA (ITALY)
T.: 0375/88181/790016 F.: 0375/88831
www.bulova-pennelli.com

BAIXENS PORTUGAL / ARGATINTAS
AVENIDA PORTAS DO MINHO, Nº 711
4760 - 706 RIBEIRÃO,
V.N. FAMALICÃO
T.: 252 910 030
www.argatintas.pt

BX-400A CPA

ColoryPaint

PURPLE LABEL

Acrylic satin paint for interior and exterior use



SUBSTRATES

Cement, brick, plaster, paint, plaster-board boards, parameters with nooks/ plastering and masonry in general.
Substrates must be sound, dry, cohesive, absorbent, well adhered, clean and free of dust.

PROPERTIES

- Satin finish
- White colour
- Does not turn yellow
- Easy to apply
- Breathable
- Does not splash
- Good coverage
- Excellent wash
- No splices
- Good performance
- Contains ANTI-MOLD additives

IDEAL FOR

- Painting walls, ceilings, façades and gypsum substrates

HOW TO USE

PREPARING THE SUBSTRATE

The substrate should be healthy, clean, strong, well adhered, consistent and be free of any trace of saltpetre, fungus, micro-organisms, grease, defocussing oils and in general any type of material that could hinder the adhesion of the product to the base.

INFORMATION ON DIRECTIVE 2004/42/CE

A1 CATEGORY. MATT PRODUCTS FOR WALLS AND CEILINGS
(BRIGHTNESS <25 to 60°) WATER-BASED

Limit: 75 g/l COV (2007); 30 g/l COV (2010)
This product contains 1,34 g/l COV max.



BX-400A CPA

ColoryPaint

PURPLE LABEL

HOW TO USE

APPLICATION CONDITIONS

Shake the product until complete equalization.

Can be applied using brush, roller or airless spray.

Protect the areas that are not to be painted (skirting, switches, door/window frames) with painting tape and/or paper.

Remove once finished and before the paint has dried in order to avoid stripping the paint.

- New masonry substrates:

The first coat can be diluted with a maximum of 5 - 10% always use clean drinking water. The second coat can be applied diluted with a maximum of 5 %.

- Old masonry substrates:

In the case of dead old gypsum or dusty bases substrates, the dust has to be cleaned off the surface and the use of **RX-501 SOLVENT-BASED FIJAPREN** as a primer and hardener, or the use of **RX-500 WATER-BASED FIJAPREN**. Once finished continue as if it was a new masonry substrate.

- Painted substrates:

Check that the paint is clean and well adhered. If on the contrary, paint should be removed by sanding or by any other convenient method (depending on the base), set the substrate using **RX-501 or RX-500** and proceed as if it was a new masonry substrate.

- Substrates with disorders:

When surface shows traces of fungus, algae or other types of micro-organisms, firstly proceed with our healing treatment **RX-524 CLEAN MICRO**. This is to be applied on the surface to be treated, and after 25 - 30 minutes performance, proceed in cleansing the substrate with the aid of a water pressure machine or a hard bristle brush.

Once completely dried, proceed in reapplying **RX-524 CLEAN MICRO** until it is completely impregnated. This treatment is called preventive, it is very effective and helps to prevent the future appearance of micro-organisms.

In the case of saltpetre stains, proceed in applying our **RX-523 CLEAN SAL**. When the product is dry, scrape the surface with the aid of a hard bristle brush. After the mechanical cleansing of the surface, rinse with clean water in order to neutralize any remaining **CLEAN SAL** residue that could still be on the substrate.

The presence of oils or grease, especially on metal sheets should be completely removed in order to allow a correct adhesion of the product on the substrate. We recommend the use of **RX-527 CLEAN OIL** for the correct and total removal of these substances

BX-400A

CPA

ColoryPaint

PURPLE LABEL

TECHNICAL FEATURES

Quality	Acrylic
Solid contents	40 – 45 % in weight
Resistance to wet scrubbing (UNE EN ISO 11998)	Class 1
Density	1,25 ± 0,07 g/ml
Brookfield viscosity	18000 - 28000 cP. (A/5/10)
PH	8.0 - 10.0
Conservation	12 months
Cleaning of tools	Use water
Speculated shine (UNE-EN ISO 2813)	Deep matt

INFORMATION ON DIRECTIVE 2004/42/CE CATEGORY a1

COV LIMIT	COV CONTENT
75 g/l (2007) – 30 g/l (2010)	1,34 g/l maximum

DRYING TIME (*)

TO THE TOUCH	REPAINTED	TOTAL
30' - 60'	4 - 8 hrs	15 days

(*) Drying time is influenced by the room temperature, relative humidity of the air and the absorption of the substrate.

THEORETICAL PERFORMANCE (**)

m ² applied per litre	9 - 12
----------------------------------	--------

(*) The practical performance depends on the substrate (type, state and absorption) the application method and the grade of dilution.

INFORMATION OF INTEREST

The manufacturing process of the paints is controlled in batches, which allows traceability in the case of any incident. The quality control system used includes, the individual design and development of each product, both with the raw materials used confirming manufacturing uniformity, as well as the final product obtained. The use in our facilities of eco-technology in the manufacturing process allows the completion of environmentally friendly efficient work.

- Non-flammable product.
- Avoid contact with eyes and skin.
- Smoking, eating or drinking in the area of use is prohibited.
- Comply with Health and Safety at Work Executive regulations.
- Store the product in a dry place, in its original packaging firmly closed and free from humidity.
- Store the containers between 5°C and 35°C.
- Recommended storage time: 12 months as from date of manufacture in its original packaging and kept free from humidity.

For further information on protective measures and first aid, consult the product Safety Data Sheet.

BX-400A

CPA

ColoryPaint

PURPLE LABEL

OBSERVATIONS

- The reading of this product's data sheet is indispensable for the correct use and application.
- The principles given in this data sheet have been obtained under normal laboratory conditions and on normal surfaces, results may vary, depending on the conditions of construction, (absorption of the surface, thickness applied, mixing water, temperature and humidity). The intervals exhibited have been obtained by means of historical measures. Slight high or low deviations to ranges presented in this technical data sheet will be admitted according to internal technical criteria and do not cause decrease in quality or will it affect the final performance of the product, being due, amongst other factors, to variations in the conditions of measure or uncertainty associated with the instruments used.
- Work conditions of the user are out of our control.
- The product should not be utilized for other uses except the ones indicated. It is advisable to follow strictly the recommendations of use given.
- A previous inspection of the state of the surface before use is fundamental.
- Do not apply on substrates with temperatures a lower than 5°C or excessively hot.
- Do not mix with any other material, it would lose its technical features.
- Painting on rainy days or maximum heat of the day is not recommended.
- Ideal temperature for applying from 5°C to 35°C.
- Maximum relative humidity: 85%.
- **ESTABLECIMIENTOS BAIXENS'** technical department informs that the new designs in the development of recent launches are considered in their experimental phase until an annual revision is made. From this point on, the product of a recent launch is considered as being totally consolidated in the market. In the meantime, **BAIXENS** reserves its right to adapt the variable specifications or ranges of work, according to technical criteria. The information subject to modification, will be identified with an asterisk at the top for easy recognition of those products which are the subject of new creation or are subject to an experimental phase or improvement in our different ranges because of market demand and or needs.
- We have a technical-sales team at your disposal for technical advice or consultation.

PACKAGING

FORMAT	13 l.	4 l.
UNITS/CASE	-	-
PALLETS	33 BUCKETS	120 BUCKETS



IPC BX400ACPANF2731B17A20


BAIXENS
 baixens.com

Testing the difference

BAIXENS ESPAÑA / PORTUGAL
 POL. IND. MONCARRA, S/N
 46230 ALGINET (VALENCIA)
 T.: 961.750.834
 F.: 961.752.471

BAIXENS FRANCE
 14, RUE DU PONT NEUF
 75001 PARIS (FRANCE)
 T.: 0.800.90.14.37
 F.: 0.800.90.20.52

BAIXENS ITALIA / BULOVA
 VIA PIETRO NENNI, 36
 46019 CICOGNARA - MANTOVA (ITALY)
 T.: 0375/88181/790016 F.: 0375/88831
 www.bulova-pennelli.com

BAIXENS PORTUGAL / ARGATINTAS
 AVENIDA PORTAS DO MINHO, Nº 711
 4760 - 706 RIBEIRÃO,
 V.N. FAMALICÃO
 T.: 252 910 030
 www.argatintas.pt

BX-230 CPA

ColoryPaint

ORANGE LABEL

Matt finish vinylic paint with good coverage



SUBSTRATES

Cement, brick, plaster, paint, dry walls, parameters with nooks/plastering and masonry in general.

Substrates must be sound, dry, cohesive, absorbent, well adhered, clean and free of dust.

PROPERTIES

- | | |
|------------------------|--|
| • Matt finish | • Good coverage |
| • White colour | • No splices |
| • Does not turn yellow | • Low odour |
| • Easy to apply | • Good adhesion on any type of masonry substrate |
| • Breathable | • Good performance |
| • Perfect finish | • Perfect finish |
| • Does not splash | • Contains ANTI-MOLD additives |
| • Washable | |

IDEAL FOR

- Painting walls, ceilings, façades and gypsum substrates

HOW TO USE

PREPARING THE SUBSTRATE

The substrate should be healthy, clean, strong, well adhered, consistent and be free of any trace of saltpetre, fungus, micro-organisms, grease, defocussing oils and in general any type of material that could hinder the adhesion of the product to the base.

INFORMATION ON DIRECTIVE 2004/42/CE

A1 CATEGORY. MATT PRODUCTS FOR WALLS AND CEILINGS
(BRIGHTNESS <25 to 60°) WATER-BASED

Limit: 75 g/l COV (2007); 30 g/l COV (2010)
This product contains 2,67 g/l COV max.



BX-230 CPA

ColoryPaint

ORANGE LABEL

HOW TO USE

APPLICATION CONDITIONS

Shake the product until complete equalization.

Can be applied using brush, roller or airless spray.

Protect the areas that are not to be painted (skirting, switches, door/window frames) with painting tape and/or paper.

Remove once finished and before the paint has dried in order to avoid stripping the paint.

- New masonry substrates:

The first coat can be diluted with a maximum of 5 - 10% always use clean drinking water. The second coat can be applied diluted with a maximum of 5 %.

- Old masonry substrates:

In the case of dead old gypsum or dusty bases substrates, the dust has to be cleaned off the surface and the use of **RX-501 SOLVENT-BASED FIJAPREN** as a primer and hardener, or the use of **RX-500 WATER-BASED FIJAPREN**. Once finished continue as if it was a new masonry substrate.

- Painted substrates:

Check that the paint is clean and well adhered. If on the contrary, paint should be removed by sanding or by any other convenient method (depending on the base), set the substrate using **RX-501 or RX-500** and proceed as if it was a new masonry substrate.

- Substrates with disorders:

When surface shows traces of fungus, algae or other types of micro-organisms, firstly proceed with our healing treatment **RX-524 CLEAN MICRO**. This is to be applied on the surface to be treated, and after 25 - 30 minutes performance, proceed in cleansing the substrate with the aid of a water pressure machine or a hard bristle brush.

Once completely dried, proceed in reapplying **RX-524 CLEAN MICRO** until it is completely impregnated. This treatment is called preventive, it is very effective and helps to prevent the future appearance of micro-organisms.

In the case of saltpetre stains, proceed in applying our **RX-523 CLEAN SAL**. When the product is dry, scrape the surface with the aid of a hard bristle brush. After the mechanical cleansing of the surface, rinse with clean water in order to neutralize any remaining **CLEAN SAL** residue that could still be on the substrate.

The presence of oils or grease, especially on metal sheets should be completely removed in order to allow a correct adhesion of the product on the substrate. We recommend the use of **RX-527 CLEAN OIL** for the correct and total removal of these substances

BX-230 CPA

ColoryPaint

ORANGE LABEL

TECHNICAL FEATURES

Quality	Vinyllic
Solid contents	60 – 65 % in weight
Resistance to wet scrubbing (UNE EN ISO 11998)	Class 3
Density	1,62 ± 0,07 g/ml
Brookfield viscosity	10000 -18000 cP. (A/5/10)
PH	8.0 - 10.0
Conservation	12 months
Cleaning of tools	Use water
Speculated shine (UNE-EN ISO 2813)	Deep matt

INFORMATION ON DIRECTIVE 2004/42/CE CATEGORY a1

COV LIMIT	COV CONTENT
75 g/l (2007) – 30 g/l (2010)	2,67 g/l maximum

DRYING TIME (*)

TO THE TOUCH	REPAINTED	TOTAL
45' - 90'	6 - 9 hrs	15 days

(*) Drying time is influenced by the room temperature, relative humidity of the air and the absorption of the substrate.

THEORETICAL PERFORMANCE (**)

m ² applied per litre	8 - 12
----------------------------------	--------

(*) The practical performance depends on the substrate (type, state and absorption) the application method and the grade of dilution.

INFORMATION OF INTEREST

The manufacturing process of the paints is controlled in batches, which allows traceability in the case of any incident. The quality control system used includes, the individual design and development of each product, both with the raw materials used confirming manufacturing uniformity, as well as the final product obtained. The use in our facilities of eco-technology in the manufacturing process allows the completion of environmentally friendly efficient work.

- Non-flammable product.
- Avoid contact with eyes and skin.
- Smoking, eating or drinking in the area of use is prohibited.
- Comply with Health and Safety at Work Executive regulations.
- Store the product in a dry place, in its original packaging firmly closed and free from humidity.
- Store the containers between 5°C and 35°C.
- Recommended storage time: 12 months as from date of manufacture in its original packaging and kept free from humidity.

For further information on protective measures and first aid, consult the product Safety Data Sheet.

BX-230 CPA

ColoryPaint

ORANGE LABEL

OBSERVATIONS

- The reading of this product's data sheet is indispensable for the correct use and application.
- The principles given in this data sheet have been obtained under normal laboratory conditions and on normal surfaces, results may vary, depending on the conditions of construction, (absorption of the surface, thickness applied, mixing water, temperature and humidity). The intervals exhibited have been obtained by means of historical measures. Slight high or low deviations to ranges presented in this technical data sheet will be admitted according to internal technical criteria and do not cause decrease in quality or will it affect the final performance of the product, being due, amongst other factors, to variations in the conditions of measure or uncertainty associated with the instruments used.
- Work conditions of the user are out of our control.
- The product should not be utilized for other uses except the ones indicated. It is advisable to follow strictly the recommendations of use given.
- A previous inspection of the state of the surface before use is fundamental.
- Do not apply on substrates with temperatures a lower than 5°C or excessively hot.
- Do not mix with any other material, it would lose its technical features.
- Painting on rainy days or maximum heat of the day is not recommended.
- Ideal temperature for applying from 5°C to 35°C.
- Maximum relative humidity: 85%.
- **ESTABLECIMIENTOS BAIXENS'** technical department informs that the new designs in the development of recent launches are considered in their experimental phase until an annual revision is made. From this point on, the product of a recent launch is considered as being totally consolidated in the market. In the meantime, **BAIXENS** reserves its right to adapt the variable specifications or ranges of work, according to technical criteria. The information subject to modification, will be identified with an asterix at the top for easy recognition of those products which are the subject of new creation or are subject to an experimental phase or improvement in our different ranges because of market demand and or needs.
- We have a technical-sales team at your disposal for technical advice or consultation.

PACKAGING

FORMAT	13 l.	4 l.
UNITS/CASE	-	-
PALLETS	33 BUCKETS	120 BUCKETS



IPC	BX230CPANF2677A20
-----	-------------------



BAIXENS
baixens.com

Testing the difference

BAIXENS ESPAÑA / PORTUGAL
POL. IND. MONCARRA, S/N
46230 ALGINET (VALENCIA)
T.: 961.750.834
F.: 961.752.471

BAIXENS FRANCE
14, RUE DU PONT NEUF
75001 PARIS (FRANCE)
T.: 0.800.90.14.37
F.: 0.800.90.20.52

BAIXENS ITALIA / BULOVA
VIA PIETRO NENNI, 36
46019 CICOGNARA - MANTOVA (ITALY)
T.: 0375/88181/790016 F.: 0375/88831
www.bulova-pennelli.com

BAIXENS PORTUGAL / ARGATINTAS
AVENIDA PORTAS DO MINHO, Nº 711
4760 - 706 RIBEIRÃO,
V.N. FAMALICÃO
T.: 252 910 030
www.argatintas.pt

BX-235 CPA

ColoryPaint

FROZEN LABEL

Matt finish vinylic paint for interior and exterior use



SUBSTRATES

Cement, brick, plaster, paint, dry walls, parameters with nooks/plastering and masonry in general.

Substrates must be sound, dry, cohesive, absorbent, well adhered, clean and free of dust.

PROPERTIES

- Matt finish
- White colour
- Does not turn yellow
- Easy to apply
- Breathable
- Perfect finish
- Does not splash
- Washable
- No splices
- Low odour
- Good adhesion on any type of masonry substrate
- Good performance
- Contains ANTI-MOLD additives

IDEAL FOR

- Painting walls, ceilings, façades and gypsum substrates

HOW TO USE

PREPARING THE SUBSTRATE

The substrate should be healthy, clean, strong, well adhered, consistent and be free of any trace of saltpetre, fungus, micro-organisms, grease, defocussing oils and in general any type of material that could hinder the adhesion of the product to the base.

INFORMATION ON DIRECTIVE 2004/42/CE

A1 CATEGORY. MATT PRODUCTS FOR WALLS AND CEILINGS
(BRIGHTNESS <25 to 60°) WATER-BASED

Limit: 75 g/l COV (2007); 30 g/l COV (2010)
This product contains 2,73 g/l COV max.



BX-235 CPA

ColoryPaint

FROZEN LABEL

HOW TO USE

APPLICATION CONDITIONS

Shake the product until complete equalization.

Can be applied using brush, roller or airless spray.

Protect the areas that are not to be painted (skirting, switches, door/window frames) with painting tape and/or paper.

Remove once finished and before the paint has dried in order to avoid stripping the paint.

- New masonry substrates:

The first coat can be diluted with a maximum of 5 - 10% always use clean drinking water. The second coat can be applied diluted with a maximum of 5 %.

- Old masonry substrates:

In the case of dead old gypsum or dusty bases substrates, the dust has to be cleaned off the surface and the use of **RX-501 SOLVENT-BASED FIJAPREN** as a primer and hardener, or the use of **RX-500 WATER-BASED FIJAPREN**. Once finished continue as if it was a new masonry substrate.

- Painted substrates:

Check that the paint is clean and well adhered. If on the contrary, paint should be removed by sanding or by any other convenient method (depending on the base), set the substrate using **RX-501 or RX-500** and proceed as if it was a new masonry substrate.

- Substrates with disorders:

When surface shows traces of fungus, algae or other types of micro-organisms, firstly proceed with our healing treatment **RX-524 CLEAN MICRO**. This is to be applied on the surface to be treated, and after 25 - 30 minutes performance, proceed in cleansing the substrate with the aid of a water pressure machine or a hard bristle brush.

Once completely dried, proceed in reapplying **RX-524 CLEAN MICRO** until it is completely impregnated. This treatment is called preventive, it is very effective and helps to prevent the future appearance of micro-organisms.

In the case of saltpetre stains, proceed in applying our **RX-523 CLEAN SAL**. When the product is dry, scrape the surface with the aid of a hard bristle brush. After the mechanical cleansing of the surface, rinse with clean water in order to neutralize any remaining **CLEAN SAL** residue that could still be on the substrate.

The presence of oils or grease, especially on metal sheets should be completely removed in order to allow a correct adhesion of the product on the substrate. We recommend the use of **RX-527 CLEAN OIL** for the correct and total removal of these substances

BX-235 CPA**ColoryPaint****FROZEN LABEL****TECHNICAL FEATURES**

Quality	Vinyllic
Solid contents	63 – 68 % in weight
Resistance to wet scrubbing (UNE EN ISO 11998)	Class 2
Density	1,65 ± 0,07 g/ml
Brookfield viscosity	20000 -30000 cP. (A/5/10)
PH	8.0 - 10.0
Conservation	12 months
Cleaning of tools	Use water
Speculated shine (UNE-EN ISO 2813)	Deep matt

INFORMATION ON DIRECTIVE 2004/42/CE CATEGORY a1

COV LIMIT	COV CONTENT
75 g/l (2007) – 30 g/l (2010)	2,73 g/l maximum

DRYING TIME (*)

TO THE TOUCH	REPAINTED	TOTAL
45' - 90'	6 - 9 hrs	15 days

(*) Drying time is influenced by the room temperature, relative humidity of the air and the absorption of the substrate.

THEORETICAL PERFORMANCE (**)

m ² applied per litre	10 - 15
----------------------------------	---------

(*) The practical performance depends on the substrate (type, state and absorption) the application method and the grade of dilution.

INFORMATION OF INTEREST

The manufacturing process of the paints is controlled in batches, which allows traceability in the case of any incident. The quality control system used includes, the individual design and development of each product, both with the raw materials used confirming manufacturing uniformity, as well as the final product obtained. The use in our facilities of eco-technology in the manufacturing process allows the completion of environmentally friendly efficient work.

- Non-flammable product.
- Avoid contact with eyes and skin.
- Smoking, eating or drinking in the area of use is prohibited.
- Comply with Health and Safety at Work Executive regulations.
- Store the product in a dry place, in its original packaging firmly closed and free from humidity.
- Store the containers between 5°C and 35°C.
- Recommended storage time: 12 months as from date of manufacture in its original packaging and kept free from humidity.

For further information on protective measures and first aid, consult the product Safety Data Sheet.

BX-235 CPA

ColoryPaint

FROZEN LABEL

OBSERVATIONS

- The reading of this product's data sheet is indispensable for the correct use and application.
- The principles given in this data sheet have been obtained under normal laboratory conditions and on normal surfaces, results may vary, depending on the conditions of construction, (absorption of the surface, thickness applied, mixing water, temperature and humidity). The intervals exhibited have been obtained by means of historical measures. Slight high or low deviations to ranges presented in this technical data sheet will be admitted according to internal technical criteria and do not cause decrease in quality or will it affect the final performance of the product, being due, amongst other factors, to variations in the conditions of measure or uncertainty associated with the instruments used.
- Work conditions of the user are out of our control.
- The product should not be utilized for other uses except the ones indicated. It is advisable to follow strictly the recommendations of use given.
- A previous inspection of the state of the surface before use is fundamental.
- Do not apply on substrates with temperatures a lower than 5°C or excessively hot.
- Do not mix with any other material, it would lose its technical features.
- Painting on rainy days or maximum heat of the day is not recommended.
- Ideal temperature for applying from 5°C to 35°C.
- Maximum relative humidity: 85%.
- **ESTABLECIMIENTOS BAIXENS'** technical department informs that the new designs in the development of recent launches are considered in their experimental phase until an annual revision is made. From this point on, the product of a recent launch is considered as being totally consolidated in the market. In the meantime, **BAIXENS** reserves its right to adapt the variable specifications or ranges of work, according to technical criteria. The information subject to modification, will be identified with an asterisk at the top for easy recognition of those products which are the subject of new creation or are subject to an experimental phase or improvement in our different ranges because of market demand and or needs.
- We have a technical-sales team at your disposal for technical advice or consultation.

PACKAGING

FORMAT	13 l.	4 l.
UNITS/CASE	-	-
PALLETS	33 BUCKETS	120 BUCKETS



IPC	BX235CPANF2633A20
-----	-------------------



BAIXENS
baixens.com

Testing the difference

BAIXENS ESPAÑA / PORTUGAL
POL. IND. MONCARRA, S/N
46230 ALGINET (VALENCIA)
T.: 961.750.834
F.: 961.752.471

BAIXENS FRANCE
14, RUE DU PONT NEUF
75001 PARIS (FRANCE)
T.: 0.800.90.14.37
F.: 0.800.90.20.52

BAIXENS ITALIA / BULOVA
VIA PIETRO NENNI, 36
46019 CICOGNARA - MANTOVA (ITALY)
T.: 0375/88181/790016 F.: 0375/88831
www.bulova-pennelli.com

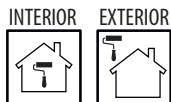
BAIXENS PORTUGAL / ARGATINTAS
AVENIDA PORTAS DO MINHO, Nº 711
4760 - 706 RIBEIRÃO,
V.N. FAMALICÃO
T.: 252 910 030
www.argatintas.pt

BX-400V CPA

ColoryPaint

PURPLE LABEL

Vinyllic satin paint for interior and exterior use



SUBSTRATES

Cement, brick, plaster, paint, plaster-board boards, parameters with nooks/ plastering and masonry in general.
Substrates must be sound, dry, cohesive, absorbent, well adhered, clean and free of dust.

PROPERTIES

- Satin finish
- White colour
- Does not turn yellow
- Easy to apply
- Breathable
- Does not splash
- Good coverage
- Excellent wash
- No splices
- Good performance
- Contains ANTI-MOLD additives

IDEAL FOR

- Painting walls, ceilings, façades and gypsum substrates

HOW TO USE

PREPARING THE SUBSTRATE

The substrate should be healthy, clean, strong, well adhered, consistent and be free of any trace of saltpetre, fungus, micro-organisms, grease, defocussing oils and in general any type of material that could hinder the adhesion of the product to the base.

INFORMATION ON DIRECTIVE 2004/42/CE

A1 CATEGORY. MATT PRODUCTS FOR WALLS AND CEILINGS
(BRIGHTNESS <25 to 60°) WATER-BASED

Limit: 75 g/l COV (2007); 30 g/l COV (2010)
This product contains 1,90 g/l COV max.



BX-400V CPA

ColoryPaint

PURPLE LABEL

HOW TO USE

APPLICATION CONDITIONS

Shake the product until complete equalization.

Can be applied using brush, roller or airless spray.

Protect the areas that are not to be painted (skirting, switches, door/window frames) with painting tape and/or paper.

Remove once finished and before the paint has dried in order to avoid stripping the paint.

- New masonry substrates:

The first coat can be diluted with a maximum of 5 - 10% always use clean drinking water. The second coat can be applied diluted with a maximum of 5 %.

- Old masonry substrates:

In the case of dead old gypsum or dusty bases substrates, the dust has to be cleaned off the surface and the use of **RX-501 SOLVENT-BASED FIJAPREN** as a primer and hardener, or the use of **RX-500 WATER-BASED FIJAPREN**. Once finished continue as if it was a new masonry substrate.

- Painted substrates:

Check that the paint is clean and well adhered. If on the contrary, paint should be removed by sanding or by any other convenient method (depending on the base), set the substrate using **RX-501 or RX-500** and proceed as if it was a new masonry substrate.

- Substrates with disorders:

When surface shows traces of fungus, algae or other types of micro-organisms, firstly proceed with our healing treatment **RX-524 CLEAN MICRO**. This is to be applied on the surface to be treated, and after 25 - 30 minutes performance, proceed in cleansing the substrate with the aid of a water pressure machine or a hard bristle brush.

Once completely dried, proceed in reapplying **RX-524 CLEAN MICRO** until it is completely impregnated. This treatment is called preventive, it is very effective and helps to prevent the future appearance of micro-organisms.

In the case of saltpetre stains, proceed in applying our **RX-523 CLEAN SAL**. When the product is dry, scrape the surface with the aid of a hard bristle brush. After the mechanical cleansing of the surface, rinse with clean water in order to neutralize any remaining **CLEAN SAL** residue that could still be on the substrate.

The presence of oils or grease, especially on metal sheets should be completely removed in order to allow a correct adhesion of the product on the substrate. We recommend the use of **RX-527 CLEAN OIL** for the correct and total removal of these substances

BX-400V

CPA

ColoryPaint

PURPLE LABEL

TECHNICAL FEATURES

Quality	Vinyllic
Solid contents	39 – 44 % in weight
Resistance to wet scrubbing (UNE EN ISO 11998)	Class 1
Density	1,27 ± 0,07 g/ml
Brookfield viscosity	14000 - 22000 cP. (A/5/10)
PH	7.0 - 9.0
Conservation	12 months
Cleaning of tools	Use water
Speculated shine (UNE-EN ISO 2813)	Deep matt

INFORMATION ON DIRECTIVE 2004/42/CE CATEGORY a1

COV LIMIT	COV CONTENT
75 g/l (2007) – 30 g/l (2010)	1,90 g/l maximum

DRYING TIME (*)

TO THE TOUCH	REPAINTED	TOTAL
30' - 60'	4 - 8 hrs	15 days

(*) Drying time is influenced by the room temperature, relative humidity of the air and the absorption of the substrate.

THEORETICAL PERFORMANCE (**)

m ² applied per litre	9 - 12
----------------------------------	--------

(*) The practical performance depends on the substrate (type, state and absorption) the application method and the grade of dilution.

INFORMATION OF INTEREST

The manufacturing process of the paints is controlled in batches, which allows traceability in the case of any incident. The quality control system used includes, the individual design and development of each product, both with the raw materials used confirming manufacturing uniformity, as well as the final product obtained. The use in our facilities of eco-technology in the manufacturing process allows the completion of environmentally friendly efficient work.

- Non-flammable product.
- Avoid contact with eyes and skin.
- Smoking, eating or drinking in the area of use is prohibited.
- Comply with Health and Safety at Work Executive regulations.
- Store the product in a dry place, in its original packaging firmly closed and free from humidity.
- Store the containers between 5°C and 35°C.
- Recommended storage time: 12 months as from date of manufacture in its original packaging and kept free from humidity.

For further information on protective measures and first aid, consult the product Safety Data Sheet.

BX-400V

CPA

ColoryPaint

PURPLE LABEL

OBSERVATIONS

- The reading of this product's data sheet is indispensable for the correct use and application.
- The principles given in this data sheet have been obtained under normal laboratory conditions and on normal surfaces, results may vary, depending on the conditions of construction, (absorption of the surface, thickness applied, mixing water, temperature and humidity). The intervals exhibited have been obtained by means of historical measures. Slight high or low deviations to ranges presented in this technical data sheet will be admitted according to internal technical criteria and do not cause decrease in quality or will it affect the final performance of the product, being due, amongst other factors, to variations in the conditions of measure or uncertainty associated with the instruments used.
- Work conditions of the user are out of our control.
- The product should not be utilized for other uses except the ones indicated. It is advisable to follow strictly the recommendations of use given.
- A previous inspection of the state of the surface before use is fundamental.
- Do not apply on substrates with temperatures a lower than 5°C or excessively hot.
- Do not mix with any other material, it would lose its technical features.
- Painting on rainy days or maximum heat of the day is not recommended.
- Ideal temperature for applying from 5°C to 35°C.
- Maximum relative humidity: 85%.
- **ESTABLECIMIENTOS BAIXENS'** technical department informs that the new designs in the development of recent launches are considered in their experimental phase until an annual revision is made. From this point on, the product of a recent launch is considered as being totally consolidated in the market. In the meantime, **BAIXENS** reserves its right to adapt the variable specifications or ranges of work, according to technical criteria. The information subject to modification, will be identified with an asterisk at the top for easy recognition of those products which are the subject of new creation or are subject to an experimental phase or improvement in our different ranges because of market demand and or needs.
- We have a technical-sales team at your disposal for technical advice or consultation.

PACKAGING

FORMAT	13 l.	4 l.
UNITS/CASE	-	-
PALLETS	33 BUCKETS	120 BUCKETS



IPC	BX400VCPANF2677B17A20
-----	-----------------------



BAIXENS
baixens.com

Testing the difference

BAIXENS ESPAÑA / PORTUGAL
POL. IND. MONCARRA, S/N
46230 ALGINET (VALENCIA)
T.: 961.750.834
F.: 961.752.471

BAIXENS FRANCE
14, RUE DU PONT NEUF
75001 PARIS (FRANCE)
T.: 0.800.90.14.37
F.: 0.800.90.20.52

BAIXENS ITALIA / BULOVA
VIA PIETRO NENNI, 36
46019 CIGOGNARA - MANTOVA (ITALY)
T.: 0375/88181/790016 F.: 0375/88831
www.bulova-pennelli.com

BAIXENS PORTUGAL / ARGATINTAS
AVENIDA PORTAS DO MINHO, Nº 711
4760 - 706 RIBEIRÃO,
V.N. FAMALICÃO
T.: 252 910 030
www.argatintas.pt

Consult the price-list for the range of

ColoryPaint



VISIT OUR WEBSITE

and get to know the rest of our products



RUALAIX



ISOLXTREM SYSTEM



APRESTINE



DIY



IMPER



UNIUNTA



MORTARS AND ADDITIVES



SURFACE PREPARATION



REVOX

baixens.com

sistema-sate-baixens.com



You will find in our web:

- Novelties
- Technical data and safety sheets
- Product selection guide
- Tutorial videos and much more



Use the QR to access
quicker to the product
information or to visit our web



Baixens Certifies

We care for
quality



Our basic premise in the
elaboration of our products

ISO 9001

We respect the
environment



We strive to preserve our
environment

ISO 14001

We care for
ours



We implement our own health and
safety at work system

OHSAS 18001

Compliance
Corporate



We establish our ethical and regulatory
compliance system

UNE 19601





BAIXENS
baixens.com

*Testing the
difference*





*Testing the
difference*

BAIXENS ESPAÑA

Pol. Ind. Moncarra, s/n
46230 Alginet (Valencia)
T.: 961.750.834
F.: 961.752.471

BAIXENS FRANCE

14, Rue du Pont Neuf
75001 Paris (France)
T.: 0.800.90.14.37
F.: 0.800.90.20.52

BAIXENS ITALIA / BULOVA

Via Pietro Nenni, 36
46019 Cicognara - MN (Italy)
T.: 0375/88181/790016 - F.: 0375/88831
www.bulova-pennelli.com

BAIXENS PORTUGAL / ARGATINTAS

Avenida Portas do Minho, Nº711
4760 - 706 Ribeirão,
V.N. Famalicão
T.: 252 910 030 - www.argatintas.pt

